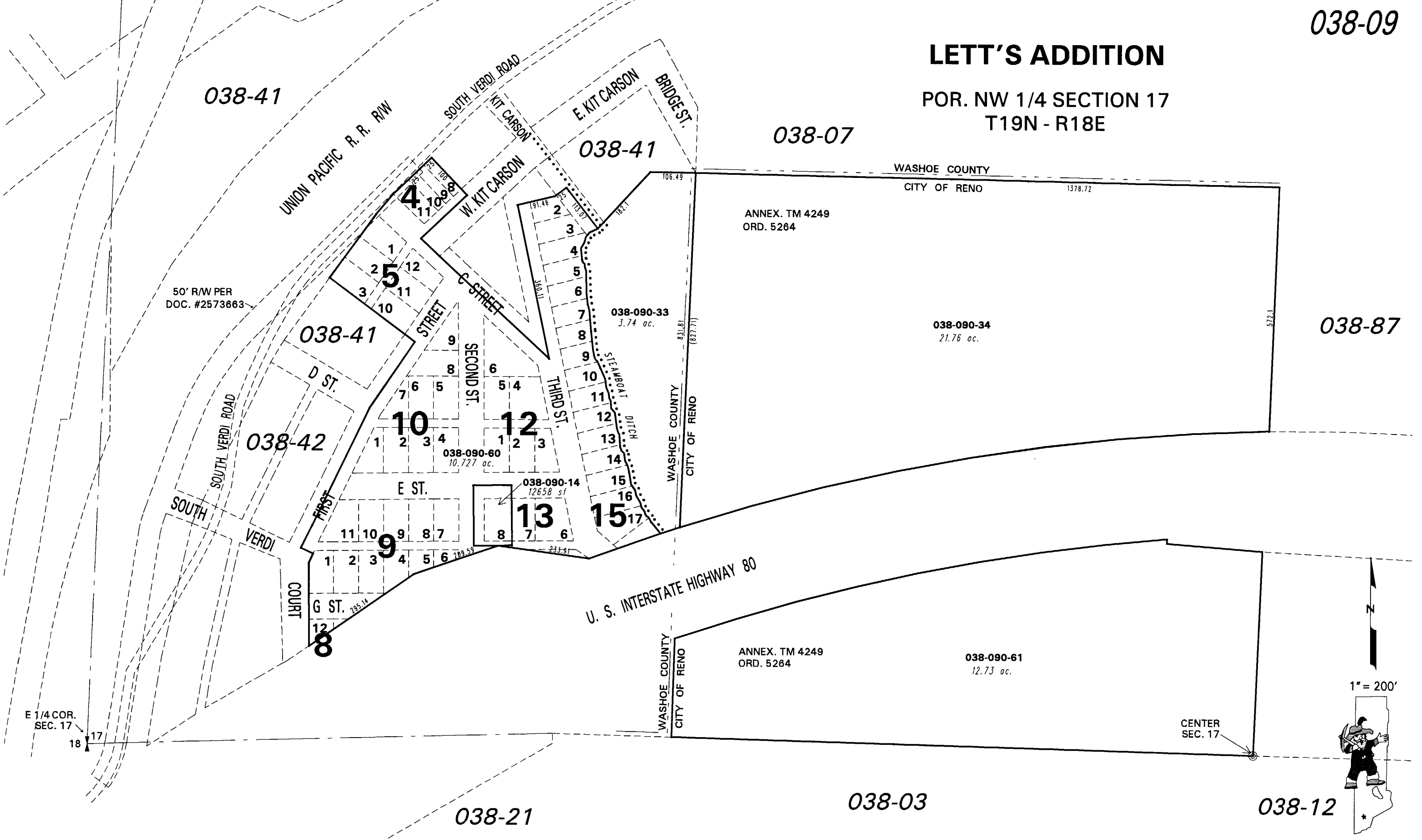


LETT'S ADDITION

POR. NW 1/4 SECTION 17
T19N - R18E



E 1/4 COR.
SEC. 17

50' R/W PER
DOC. #2573663

WASHOE COUNTY
CITY OF RENO

WASHOE COUNTY
CITY OF RENO

WASHOE COUNTY
CITY OF RENO

CENTER
SEC. 17

NOTE: This map is prepared for the use of the Washoe County Assessor for assessment and illustrative purposes only. It does not represent a survey of the premises. No liability is assumed as to the sufficiency or the accuracy of the data delineated hereon.

Office of Washoe County Assessor, Nevada - Joshua G. Wilson

This area previously shown on _____

NOTE: Areas of parcels which are less than 2 acres are shown in square feet.

Drawn by	HCS	08/30/01
Revised	HCS 11/1/02, 9/3/03 TWT 4/11/06	9/12/07