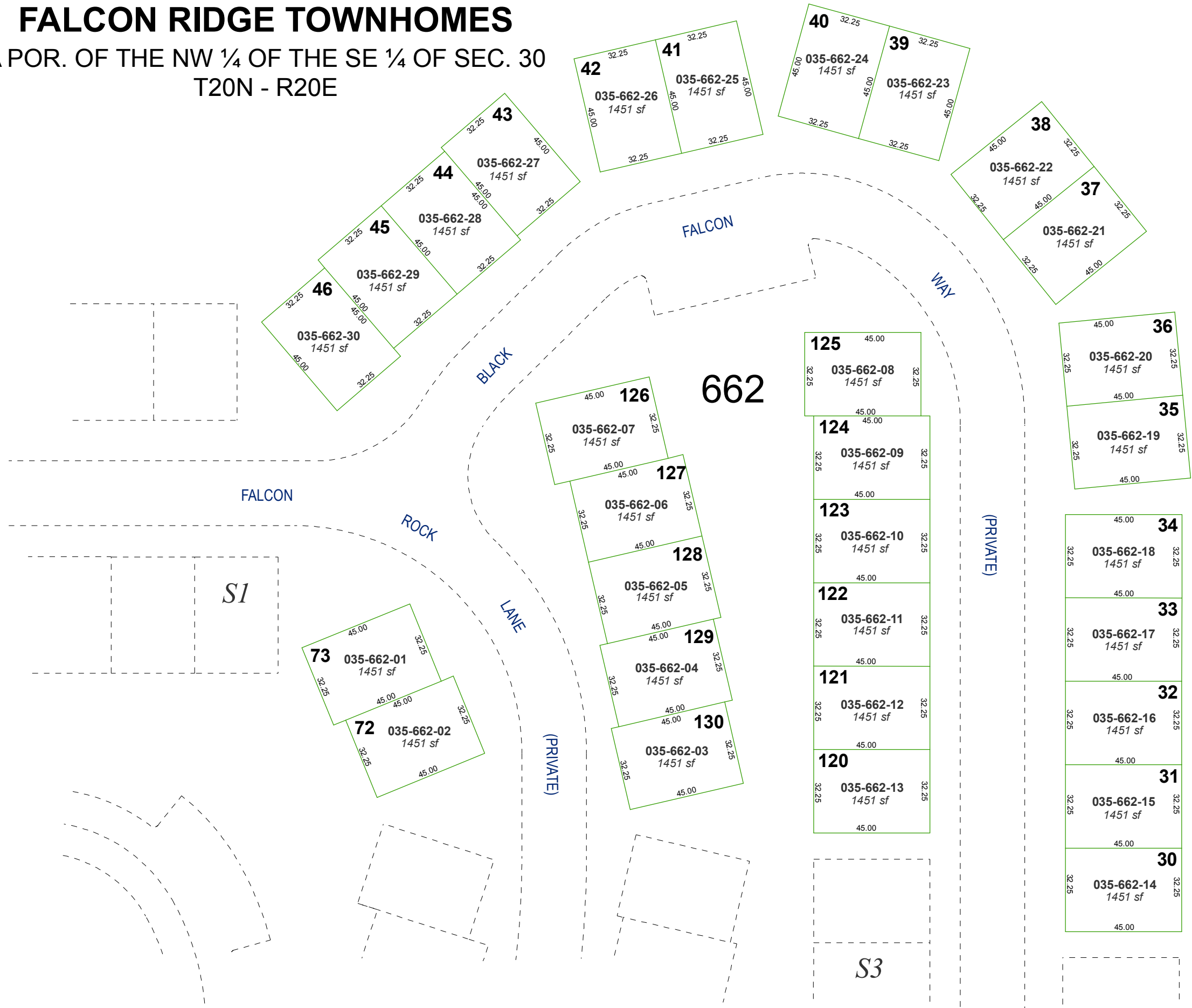


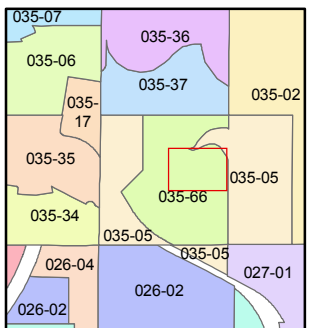
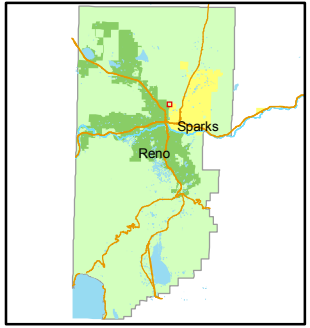
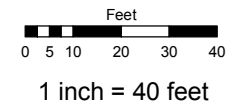
**(#4712)**  
**FALCON RIDGE TOWNHOMES**  
 A POR. OF THE NW ¼ OF THE SE ¼ OF SEC. 30  
 T20N - R20E



Assessor's Map Number  
**035-66-S2**

STATE OF NEVADA  
**WASHOE COUNTY**  
 ASSESSOR'S OFFICE  
 Joshua G. Wilson, Assessor

1001 East Ninth Street  
 Building D  
 Reno, Nevada 89512  
 (775) 328-2231



created by: NLH 12/17/2010  
 last updated: \_\_\_\_\_  
 area previously shown on map(s)  
035-05

NOTE: This map was prepared for the use of the Washoe County Assessor for assessment and illustrative purposes only. It does not represent a survey of the premises. No liability is assumed as to the sufficiency or accuracy of the data delineated herein.