

028-06

QUEEN WAY

028-44

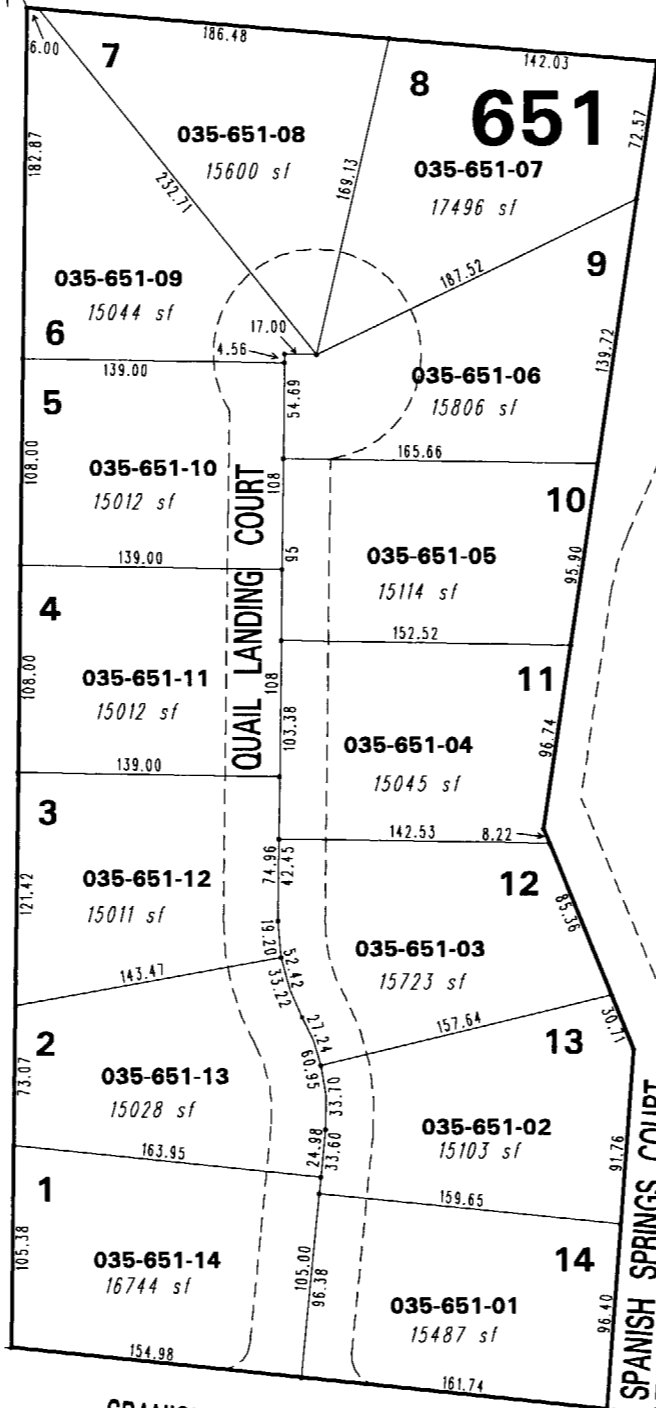
NORTH TRUCKEE LANE

035-30

28 27
33 34

035-30

N23 56'45"W, 574.26

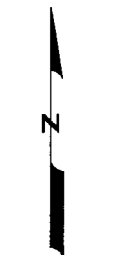


**(#4589)
QUAIL LANDING**
PORTION OF THE NW 1/4
SECTION 34, T20N - R20E

035-30

SPANISH SPRINGS ROAD

036-67



1" = 100'



NOTE: This map is prepared for the use of the Washoe County Assessor for assessment and illustrative purposes only. It does not represent a survey of the premises. No liability is assumed as to the sufficiency or the accuracy of the data delineated hereon.

Office of Washoe County Assessor, Nevada - Robert W. McGowan

This area previously shown on 035-30

NOTE: Areas of parcels which are less than 2 acres are shown in square feet.

Drawn by	CFB 1/30/2006
Revised	