

VINTAGE HILLS - UNIT 2 (#3032)

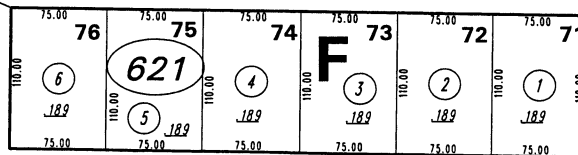
PORTION SW 1/4 SECTION 27, T20N - R20E

35-62

W 1/4 CORNER SEC 27

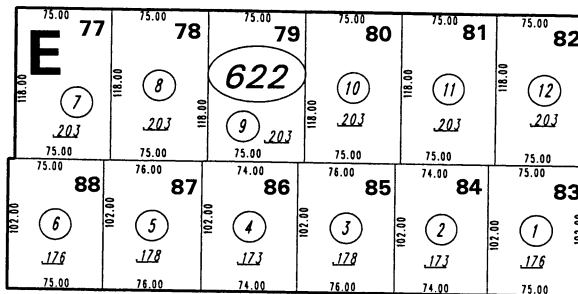


514-16



55.00 CALLE MYRIAM

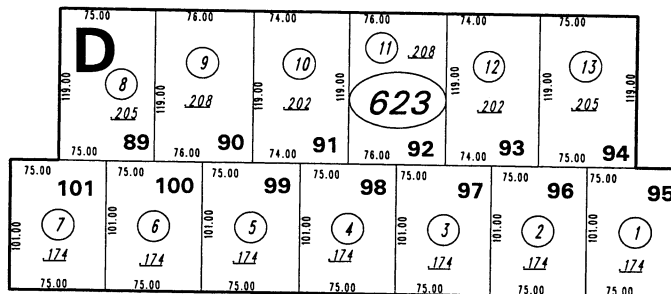
514-14



60

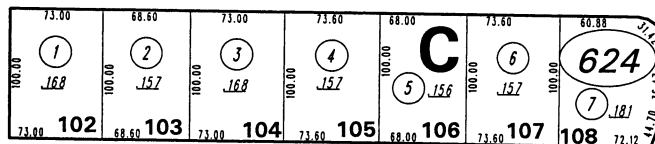
55.00 VIVIAN DRIVE

514-15

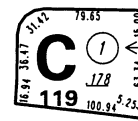


55.00 FRANCESCA WAY

63



CHRISTINA CIRCLE



1" = 100'



NOTE: This map is prepared for the use of the Washoe County Assessor for assessment and illustrative purposes only. It does not represent a survey of the premises. No liability is assumed as to the sufficiency or the accuracy of the data delineated hereon.

Office of Washoe County Assessor, Nevada - Robert W. McGowan

NOTE: ASSESSOR'S BLOCK NUMBERS SHOWN IN ELLIPSES
ASSESSOR'S PARCEL NUMBERS SHOWN IN CIRCLES

Drawn by .RM 5/26/94
Revised 5/95