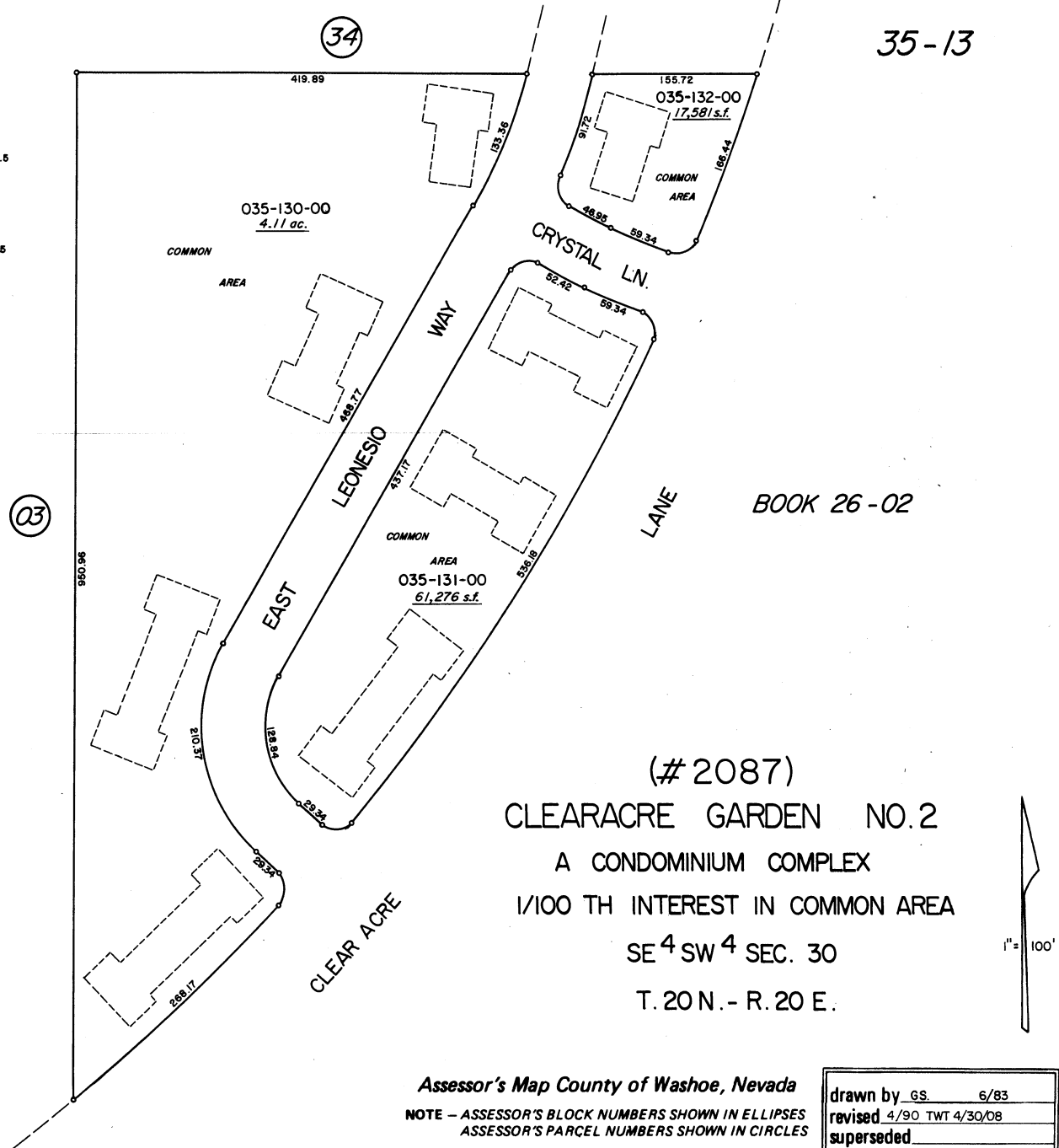


TYPICAL BUILDING UNITS

1" = 40'

NOTE: This Map is prepared for the use of the Washoe County Assessor for Assessment and illustrative purposes only, it does not represent survey of the premises. No liability is assumed as to the sufficiency or accuracy of the data delineated hereon.



(# 2087)
 CLEARACRE GARDEN NO. 2
 A CONDOMINIUM COMPLEX
 1/100 TH INTEREST IN COMMON AREA
 SE 4 SW 4 SEC. 30
 T. 20 N. - R. 20 E.

Assessor's Map County of Washoe, Nevada
 NOTE - ASSESSOR'S BLOCK NUMBERS SHOWN IN ELLIPSES
 ASSESSOR'S PARCEL NUMBERS SHOWN IN CIRCLES

drawn by	GS.	6/83
revised	4/90 TWT	4/30/08
superseded		