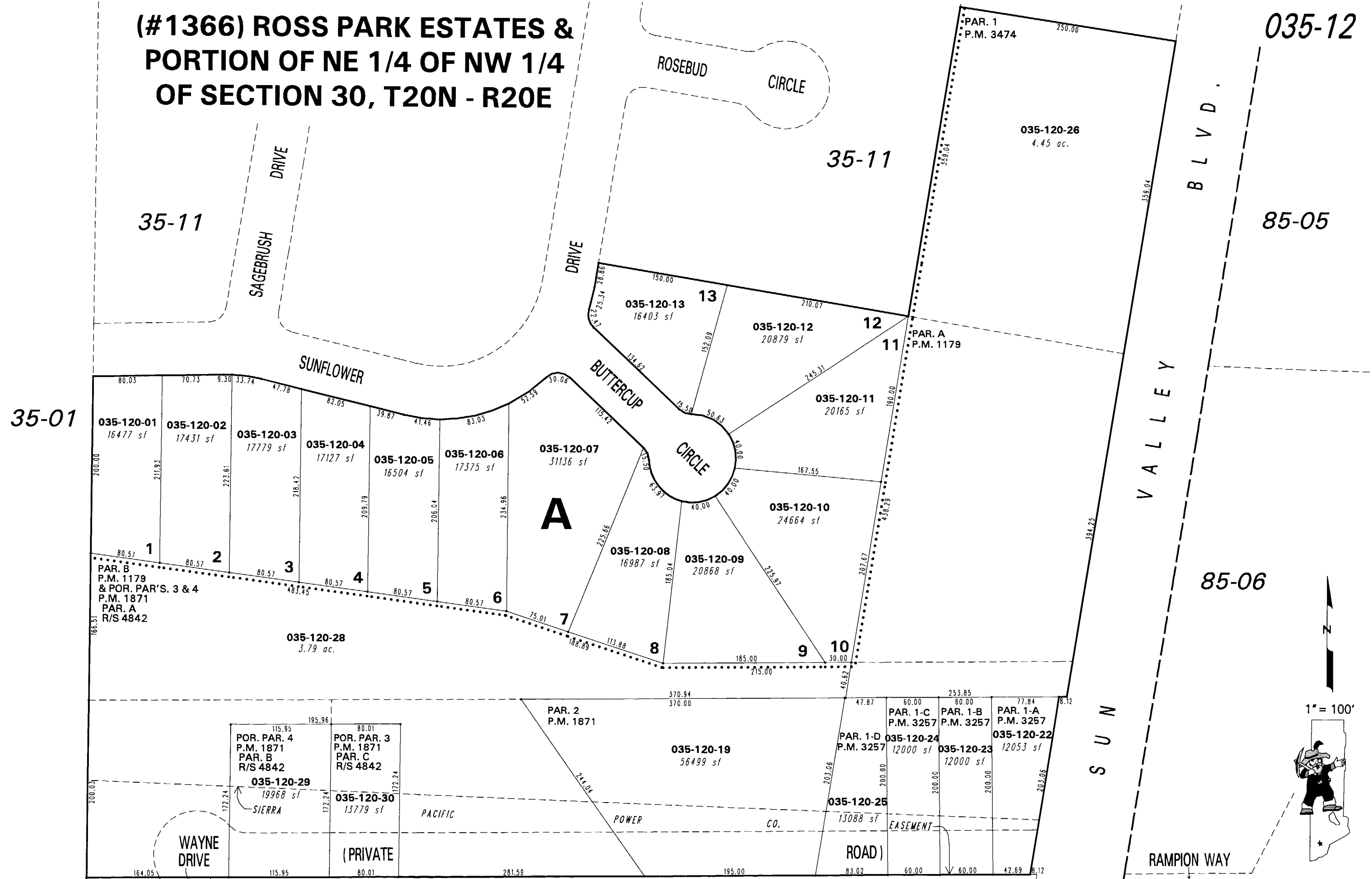


**(#1366) ROSS PARK ESTATES & PORTION OF NE 1/4 OF NW 1/4 OF SECTION 30, T20N - R20E**



NOTE: This map is prepared for the use of the Washoe County Assessor for assessment and illustrative purposes only. It does not represent a survey of the premises. No liability is assumed as to the sufficiency or the accuracy of the data delineated hereon.

**35-07**  
Office of Washoe County Assessor, Nevada - Joshua G. Wilson

This area previously shown on \_\_\_\_\_

NOTE: Areas of parcels which are less than 2 acres are shown in square feet.

Drawn by TWT 05/07/03  
Revised TWT 2/13/07