

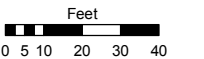
(#1716)
SPRING VILLAS TOWNHOUSE
 A POR. OF THE SE ¼ OF SEC. 4,
 T19N - R20E

Assessor's Map Number

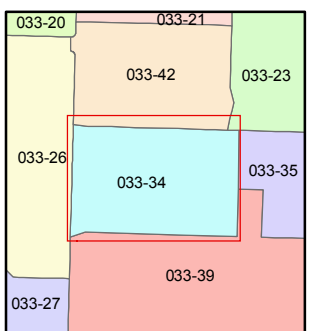
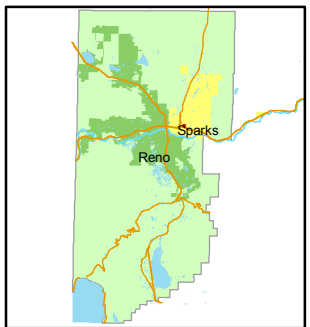
033-34

STATE OF NEVADA
WASHOE COUNTY
 ASSESSOR'S OFFICE
 Joshua G. Wilson, Assessor

1001 East Ninth Street
 Building D
 Reno, Nevada 89512
 (775) 328-2231



1 inch = 50 feet

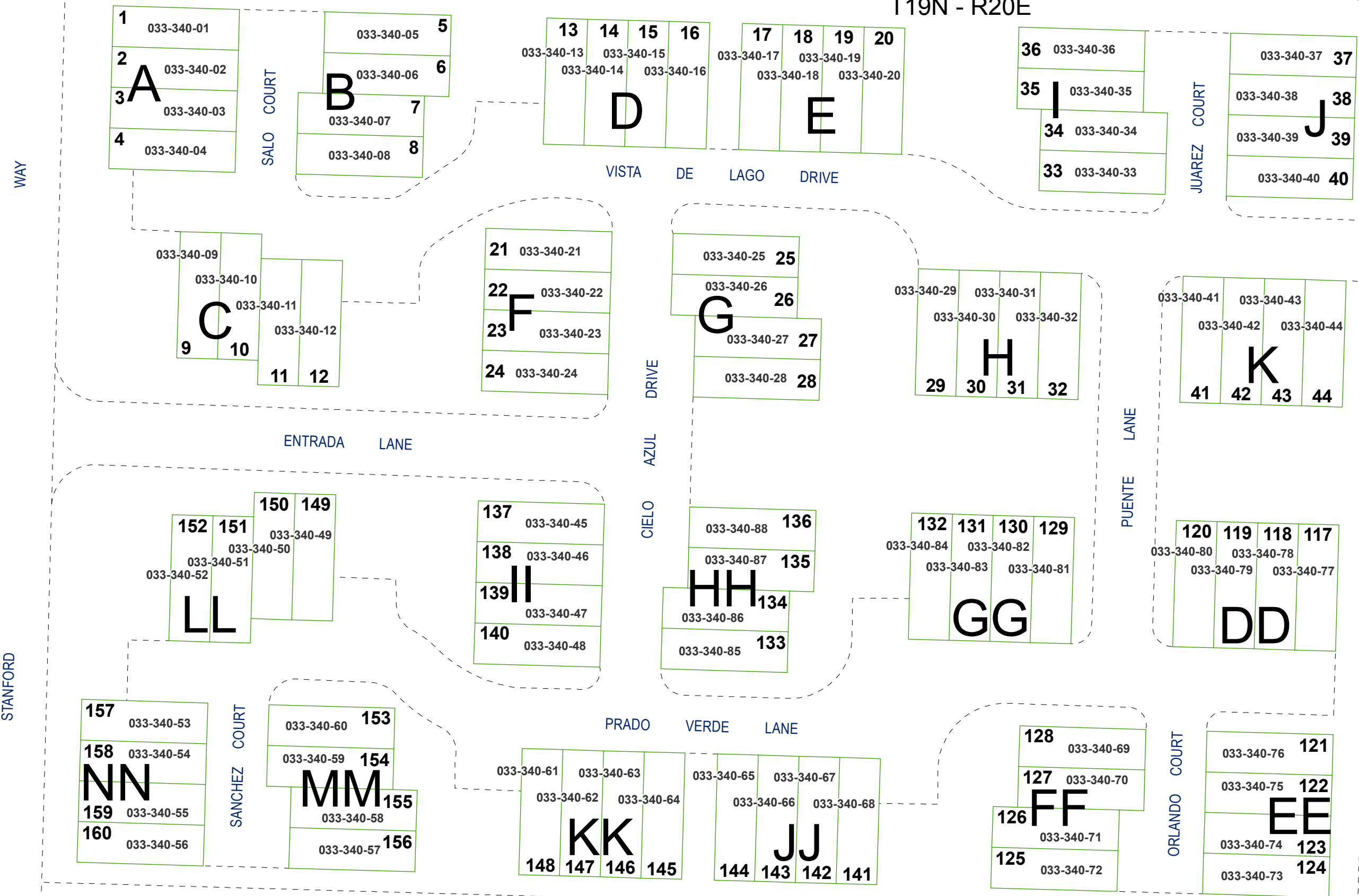


created by: NLH 6/14/2010

last updated: NLH 11/18/2010

area previously shown on map(s)

NOTE: This map was prepared for the use of the Washoe County Assessor for assessment and illustrative purposes only. It does not represent a survey of the premises. No liability is assumed as to the sufficiency or accuracy of the data delineated herein.



NOTE:
 SEE PG. 033-33 FOR UNIT DETAILS AND COMMON AREA PARCEL

WAY

STANFORD