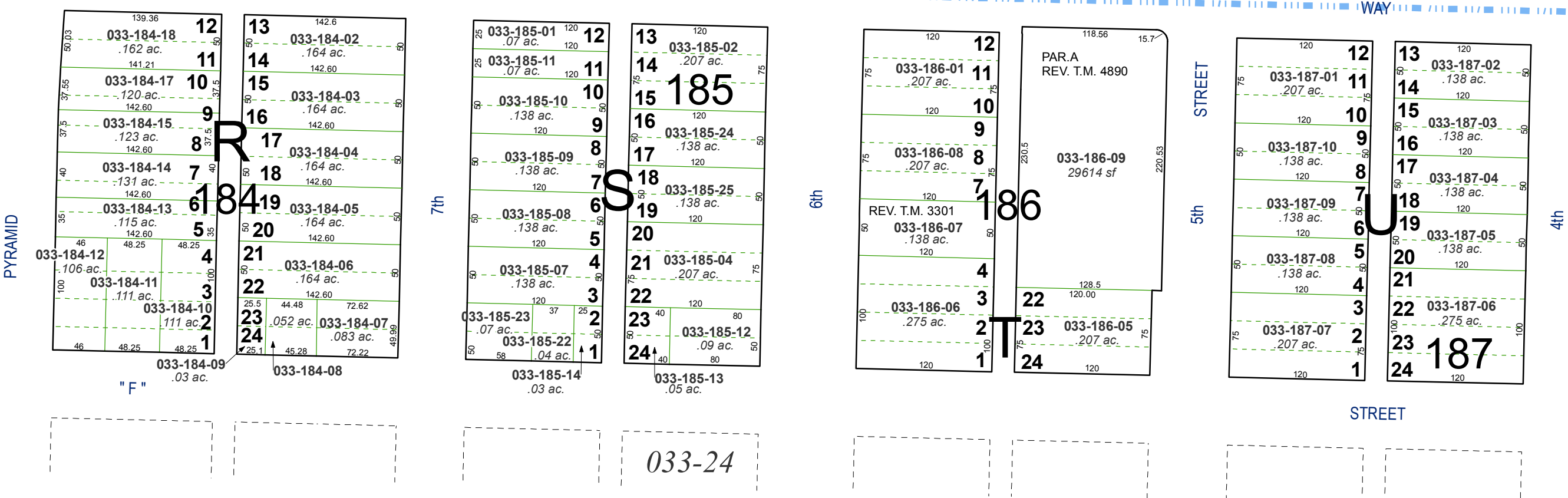
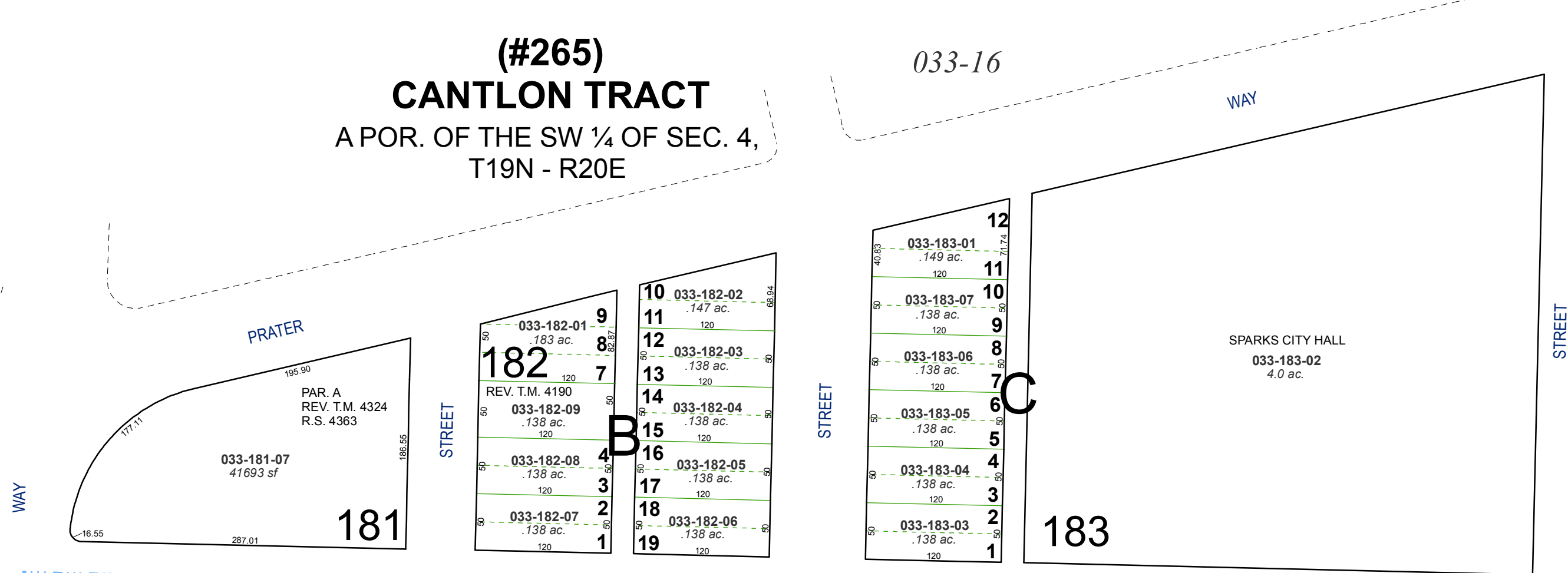


(#265)
CANTLON TRACT
 A POR. OF THE SW ¼ OF SEC. 4,
 T19N - R20E

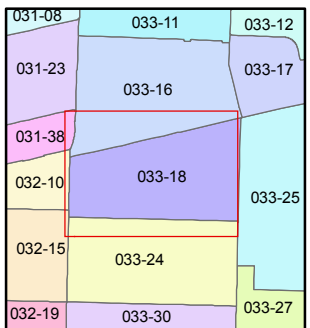
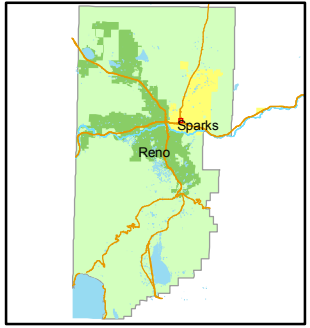
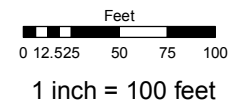


(#85)
O'SULLIVAN ADDITION

Assessor's Map Number
033-18

STATE OF NEVADA
WASHOE COUNTY
ASSESSOR'S OFFICE
 Joshua G. Wilson, Assessor

1001 East Ninth Street
 Building D
 Reno, Nevada 89512
 (775) 328-2231



created by: NLH 5/21/2010

last updated: _____

area previously shown on map(s) _____

NOTE: This map was prepared for the use of the Washoe County Assessor for assessment and illustrative purposes only. It does not represent a survey of the premises. No liability is assumed as to the sufficiency or accuracy of the data delineated hereon.