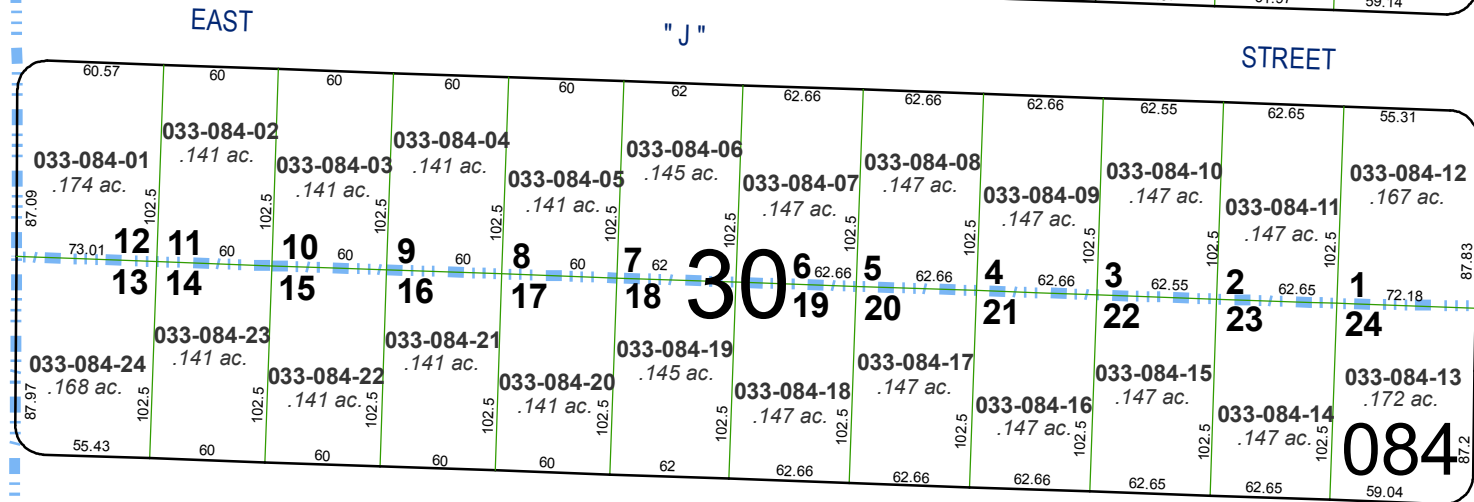
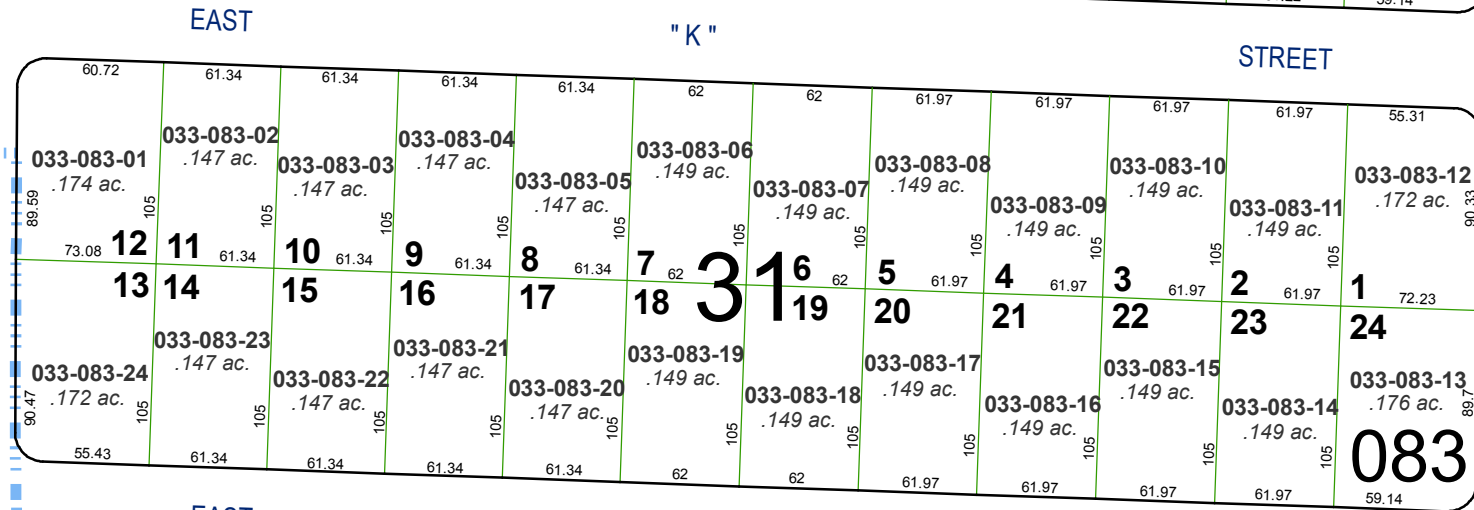
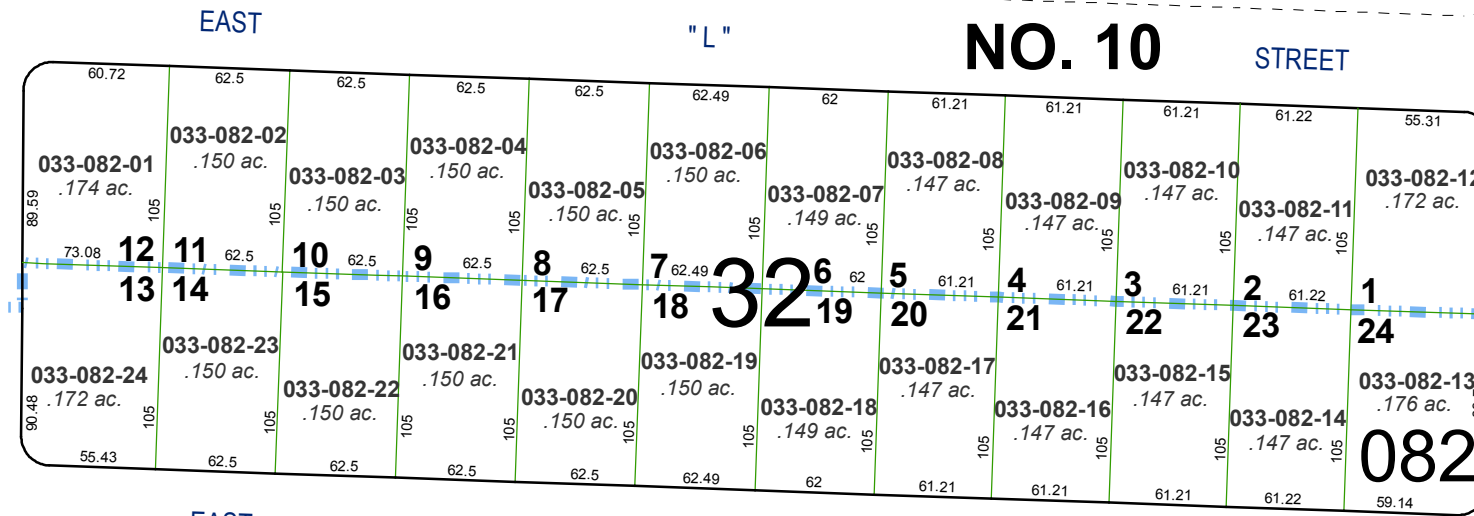
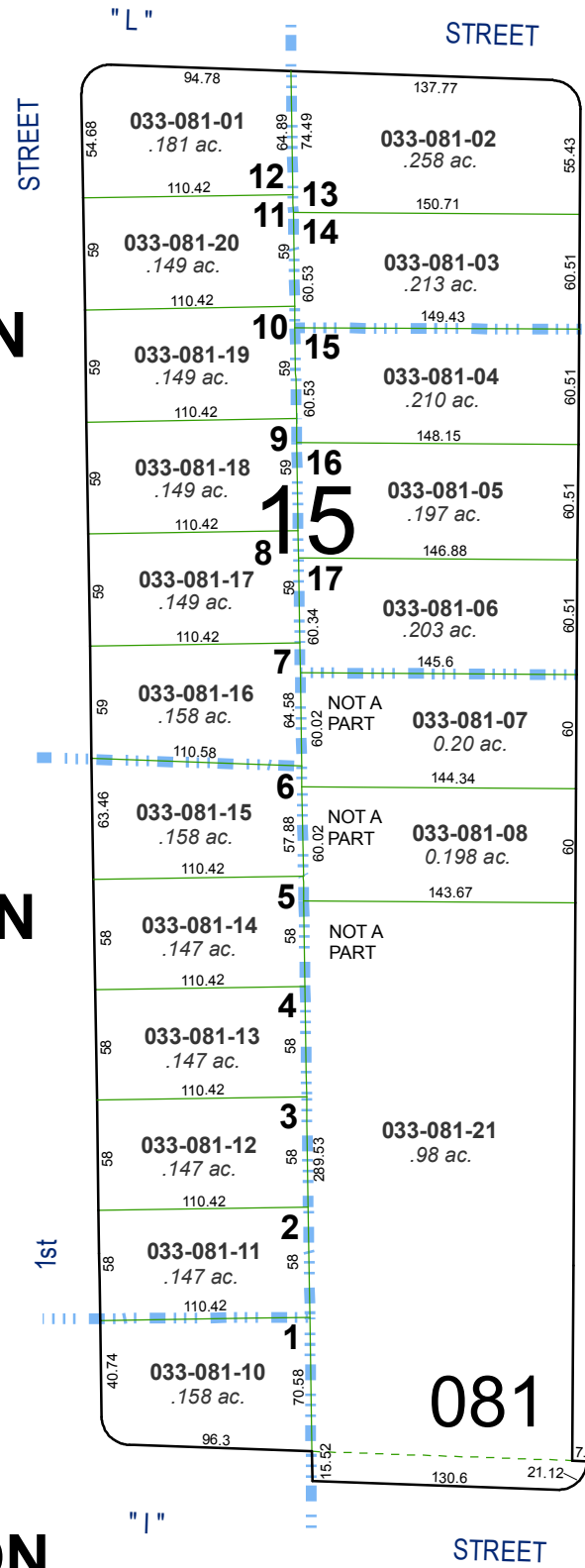


ADDITIONS TO GREENBRAE TERRACE SUBDIVISION

A POR. OF THE N 1/2 OF SEC. 4
T19N - R20E

(#532) ADDITION NO. 10



(#473) ADDITION NO. 4

(#471) ADDITION NO. 3

(#459) ADDITION NO. 1

(#542) ADDITION NO. 11

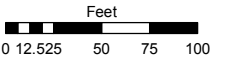
(#550) ADDITION NO. 12

Assessor's Map Number

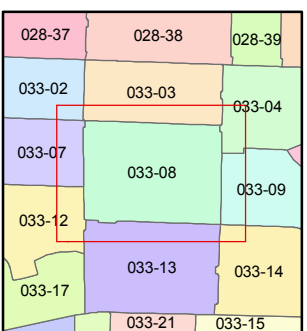
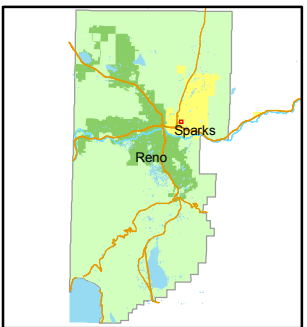
033-08

STATE OF NEVADA
WASHOE COUNTY
ASSESSOR'S OFFICE
Joshua G. Wilson, Assessor

1001 East Ninth Street
Building D
Reno, Nevada 89512
(775) 328-2231



1 inch = 100 feet



created by: NLH 11/23/2010

last updated: _____

area previously shown on map(s) _____

NOTE: This map was prepared for the use of the Washoe County Assessor for assessment and illustrative purposes only. It does not represent a survey of the premises. No liability is assumed as to the sufficiency or accuracy of the data delineated herein.