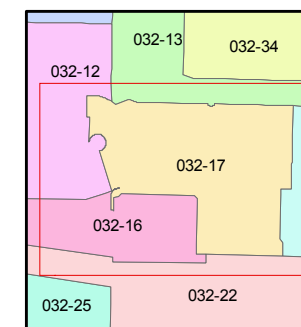
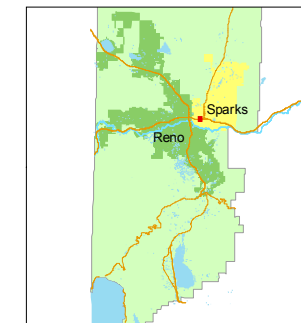


1 inch = 100 feet



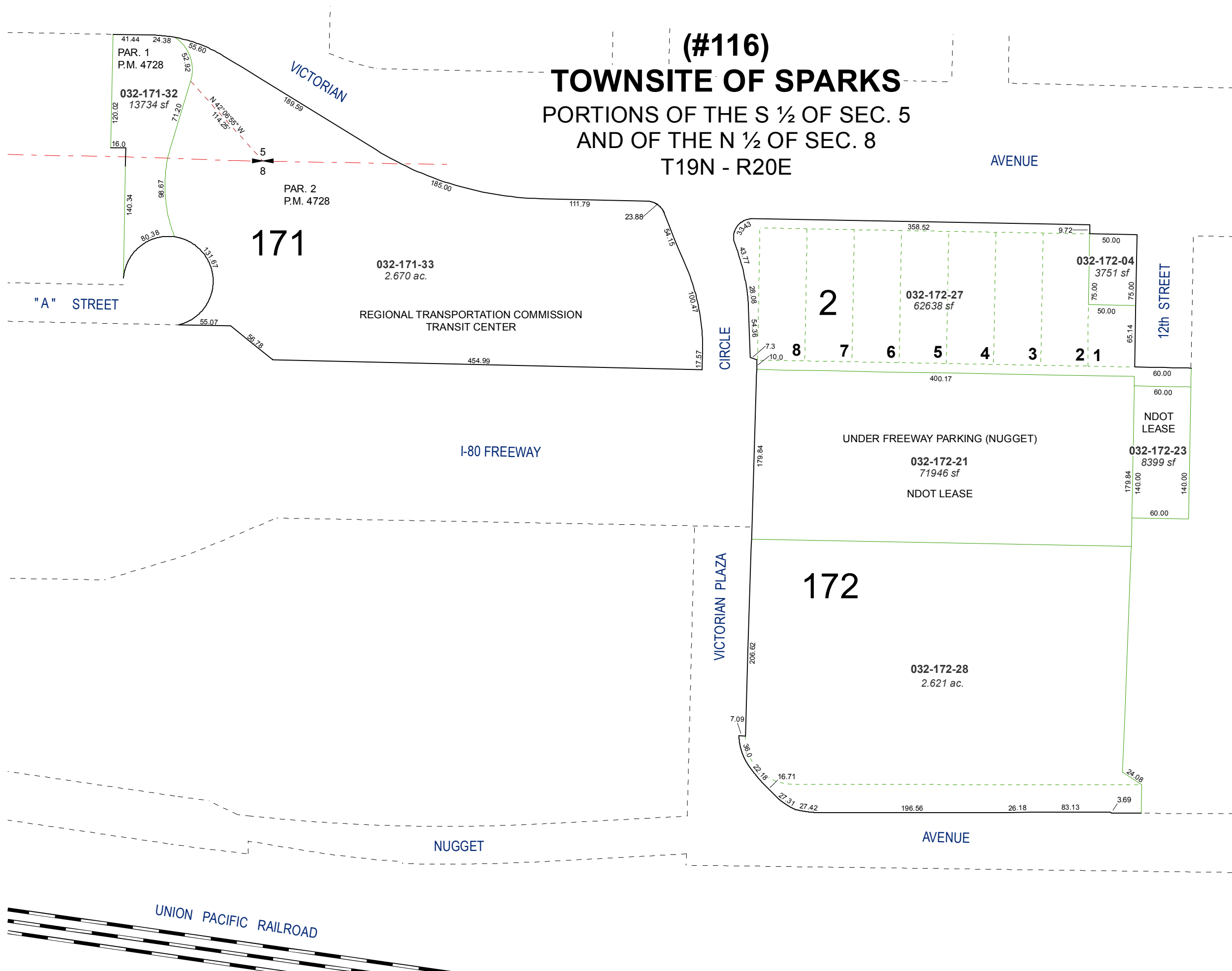
created by: NLH 5/17/2010

last updated: CFB 06/17/2011

area previously shown on map(s)

NOTE: This map was prepared for the use of the Washoe County Assessor for assessment and illustrative purposes only. It does not represent a survey of the premises. No liability is assumed as to the sufficiency or accuracy of the data delineated hereon.

(#116)
TOWNSITE OF SPARKS
PORTIONS OF THE S 1/2 OF SEC. 5
AND OF THE N 1/2 OF SEC. 8
T19N - R20E



UNION PACIFIC RAILROAD