

**(#79)  
NEWTOWN TRACT**

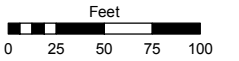
A POR. OF THE SW ¼ OF SEC. 5  
AND A POR. OF THE NW ¼ OF SEC. 8  
T19N - R20E

Assessor's Map Number

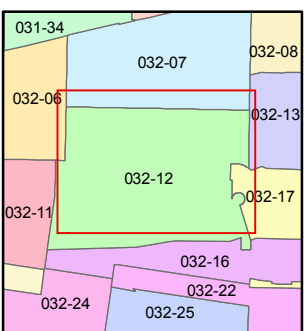
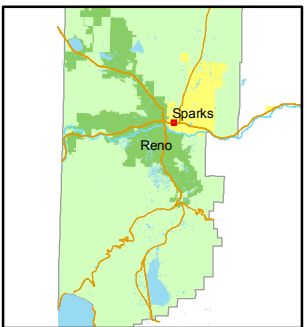
**032-12**

STATE OF NEVADA  
**WASHOE COUNTY**  
ASSESSOR'S OFFICE  
Joshua G. Wilson, Assessor

1001 East Ninth Street  
Building D  
Reno, Nevada 89512  
(775) 328-2231



1 inch = 100 feet

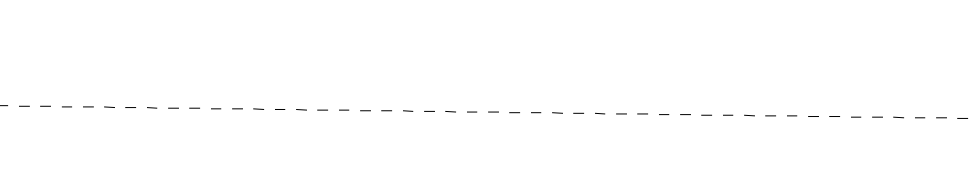
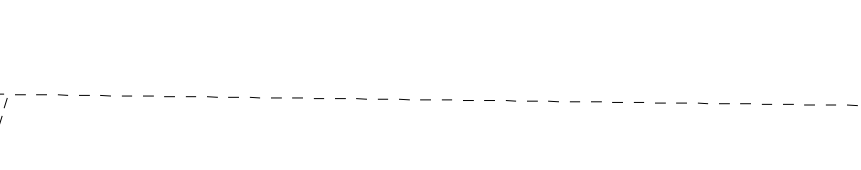
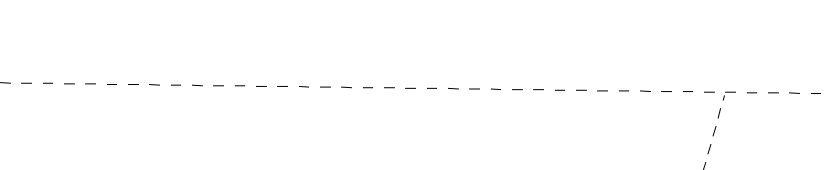
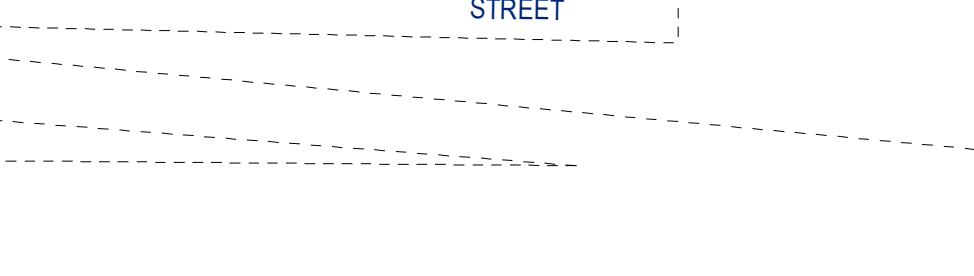
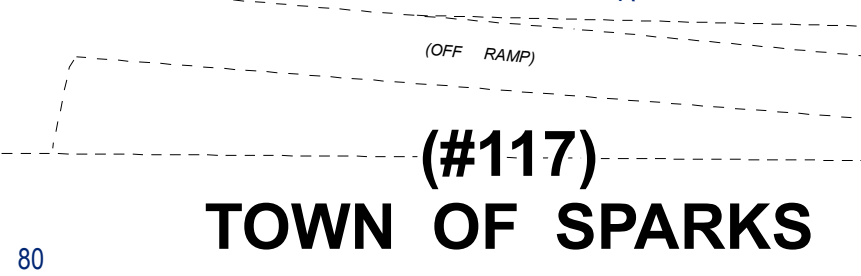
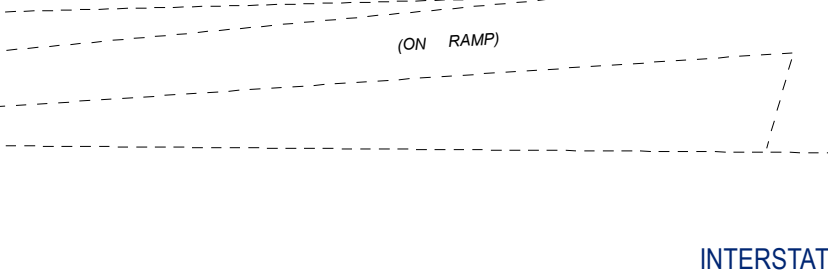
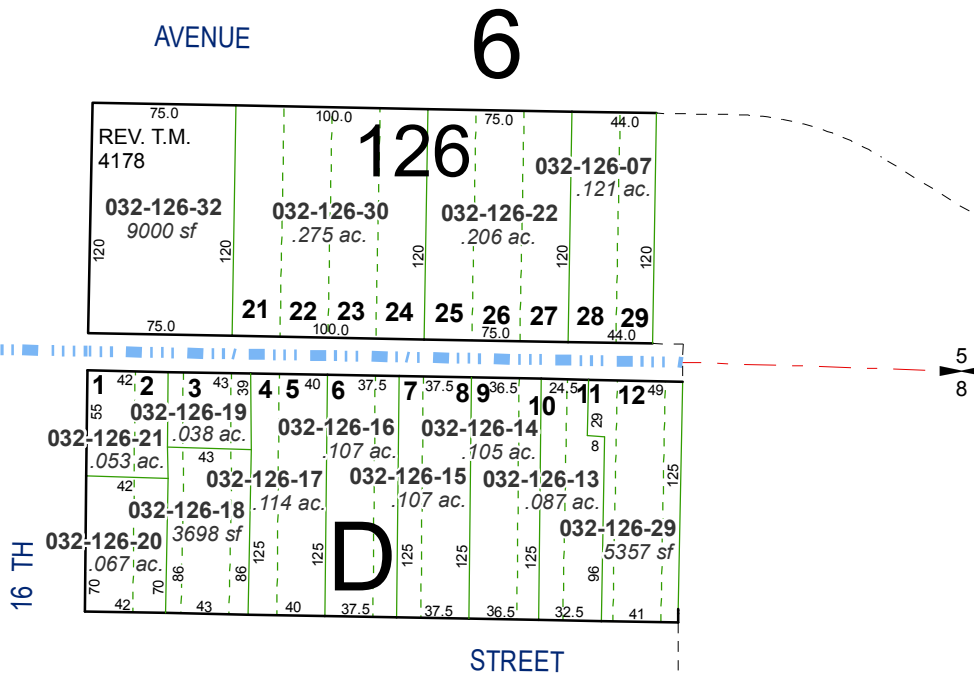
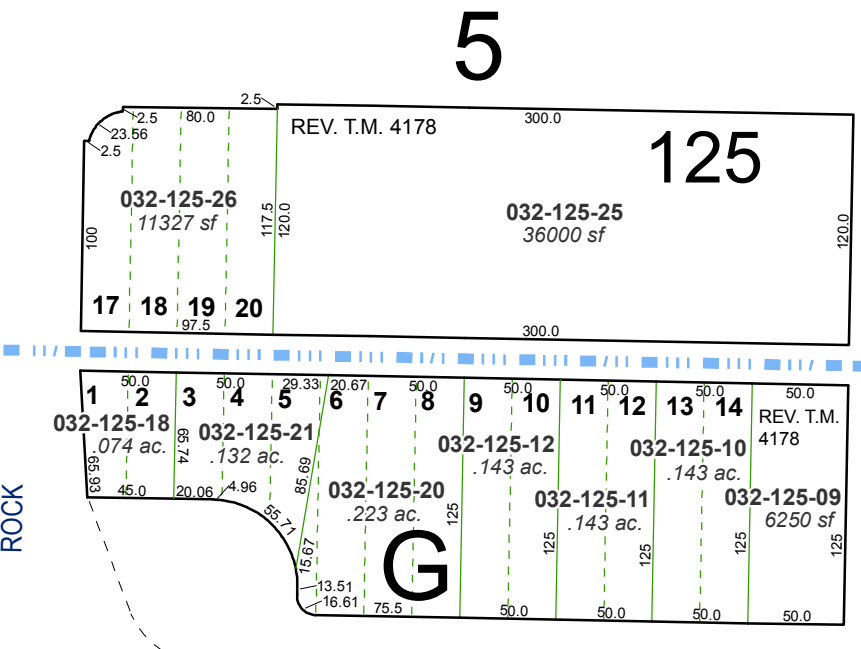
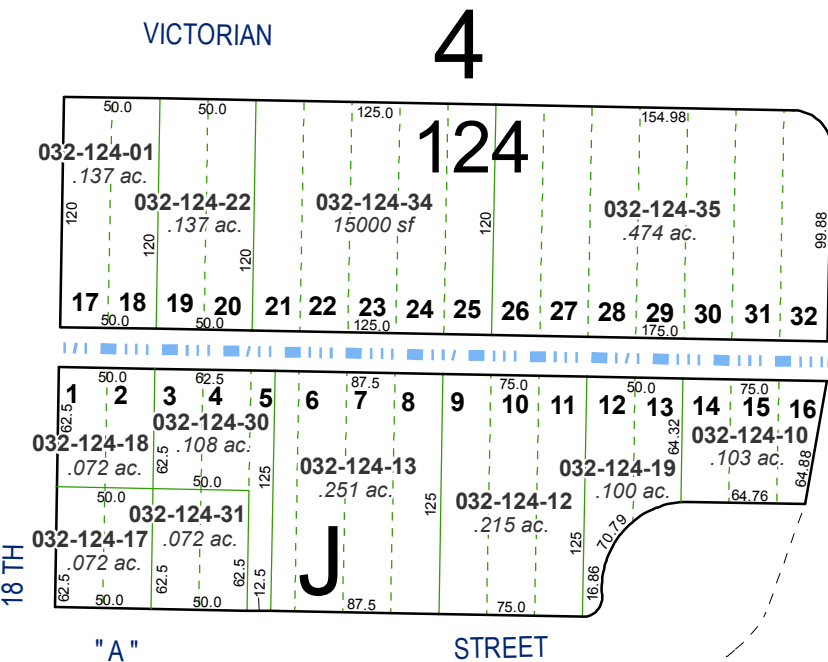
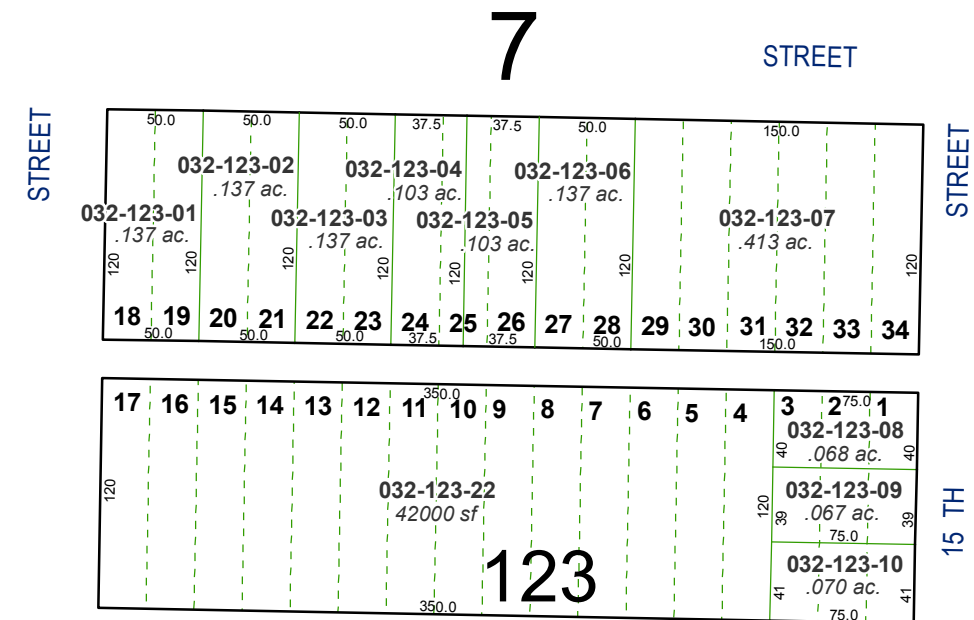
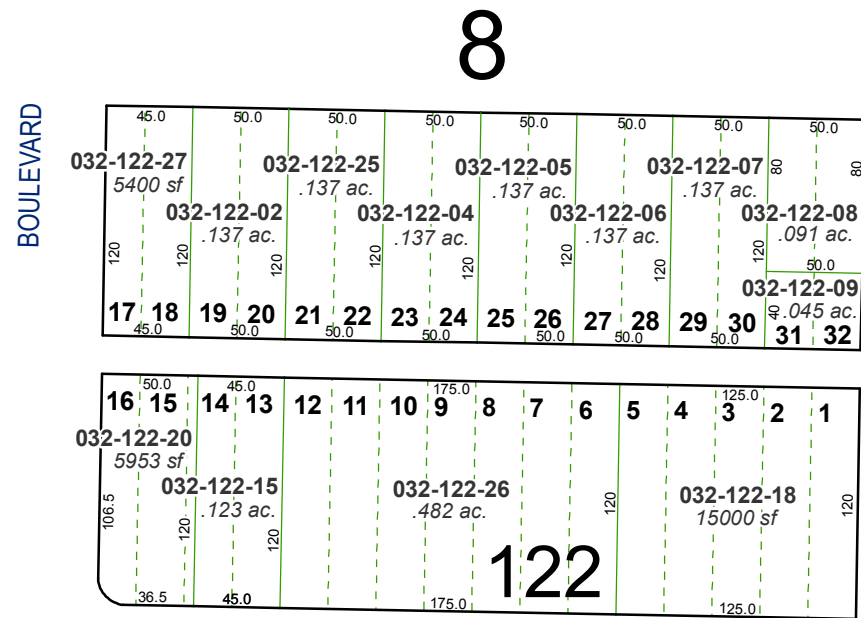
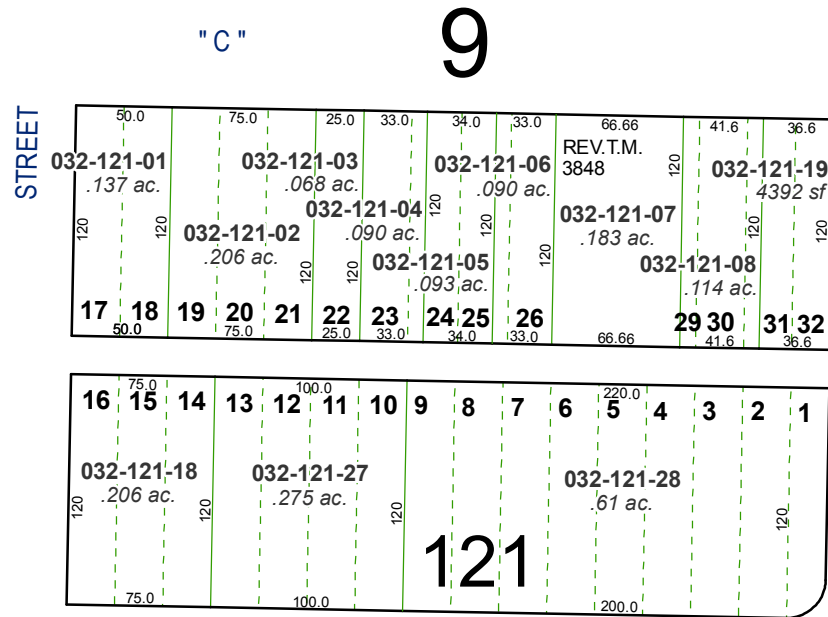


created by: NLH 5/12/2010

last updated: KSB 3/16/11

area previously shown on map(s)

NOTE: This map was prepared for the use of the Washoe County Assessor for assessment and illustrative purposes only. It does not represent a survey of the premises. No liability is assumed as to the sufficiency or accuracy of the data delineated hereon.



**(#117)  
TOWN OF SPARKS**

INTERSTATE 80

(ON RAMP)

(OFF RAMP)