

(#79)
NEWTOWN TRACT
A POR. OF THE SW 1/4 OF SEC. 5,
T19N - R20E

Assessor's Map Number

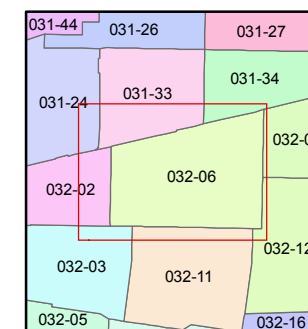
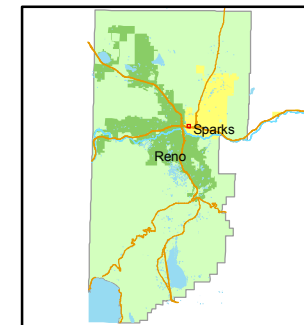
032-06

STATE OF NEVADA
WASHOE COUNTY
ASSESSOR'S OFFICE
Joshua G. Wilson, Assessor

1001 East Ninth Street
Building D
Reno, Nevada 89512
(775) 328-2231



Feet
0 12.5 25 50 75 100
1 inch = 100 feet



created by: NLH 5/05/2010

last updated: _____

area previously shown on map(s)

NOTE: This map was prepared for the use of the Washoe County Assessor for assessment and illustrative purposes only. It does not represent a survey of the premises. No liability is assumed as to the sufficiency or accuracy of the data delineated herein.

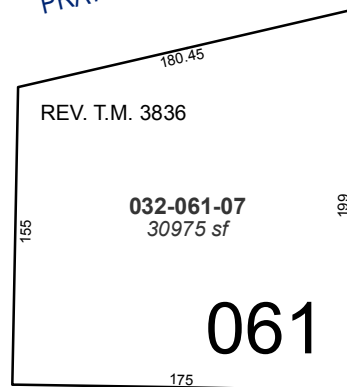
BOOK 031

14

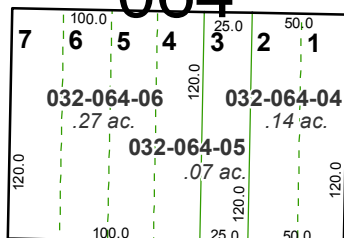
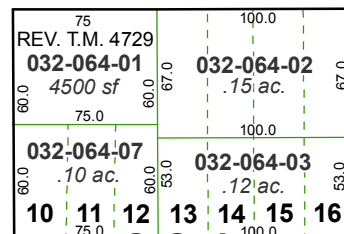
PRATER

STREET

STREET

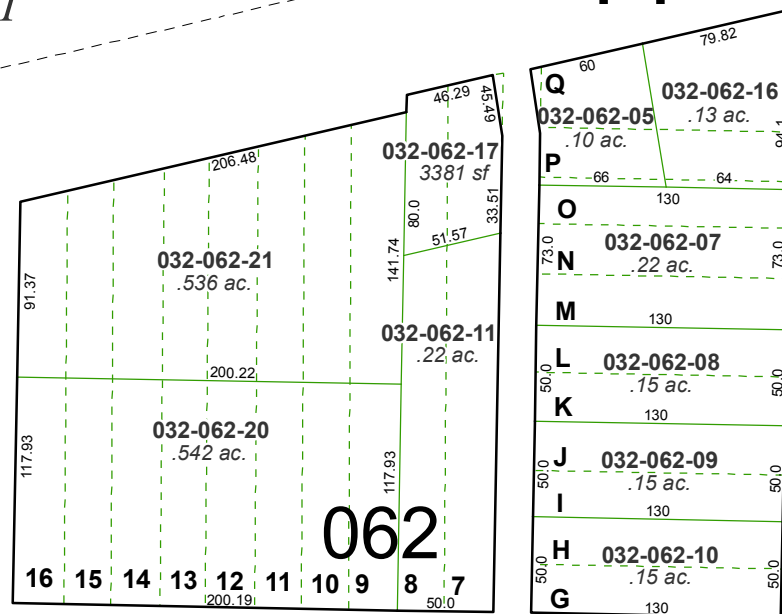


12

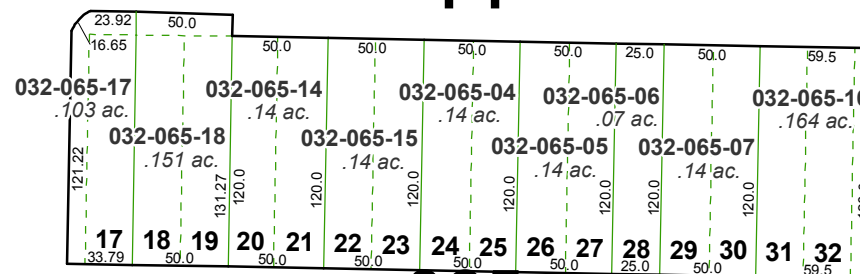


1

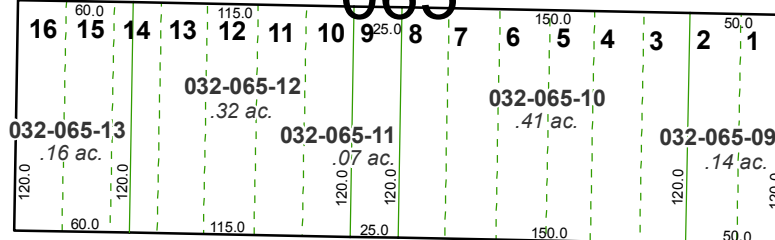
032-03



11



065

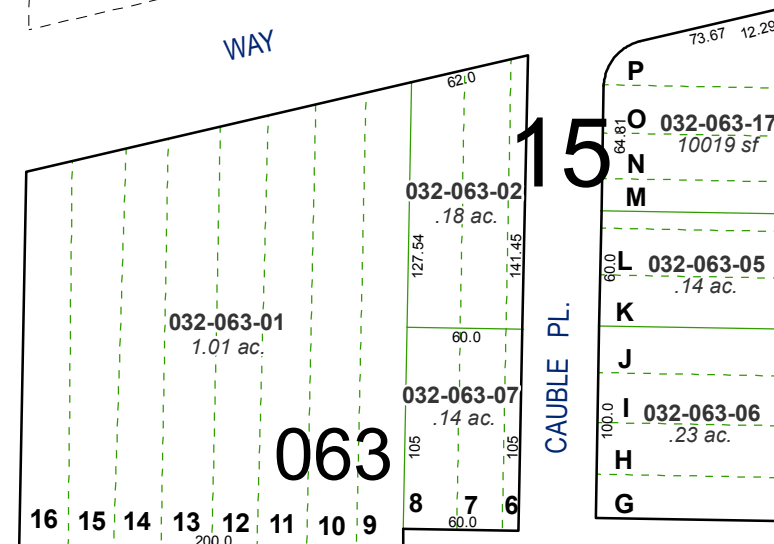


VICTORIAN

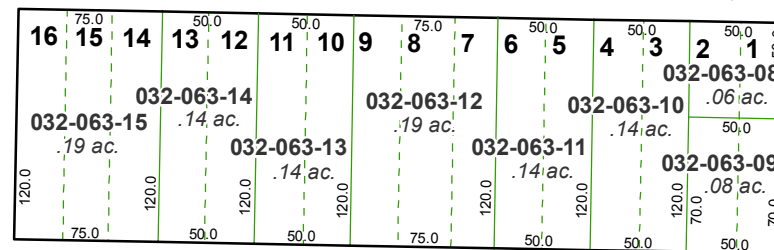
2

032-11

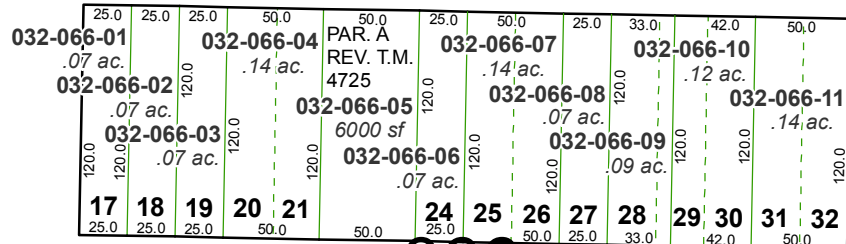
STREET



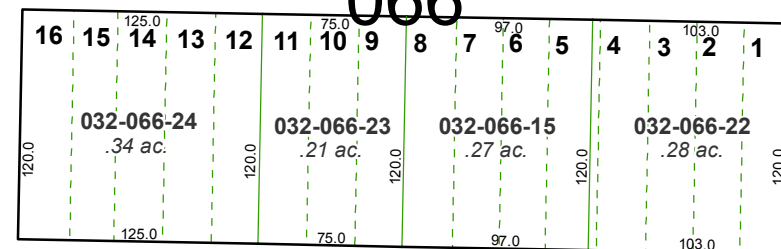
063



10



066



AVENUE

3

STREET

D ST.

032-07

18th

032-12