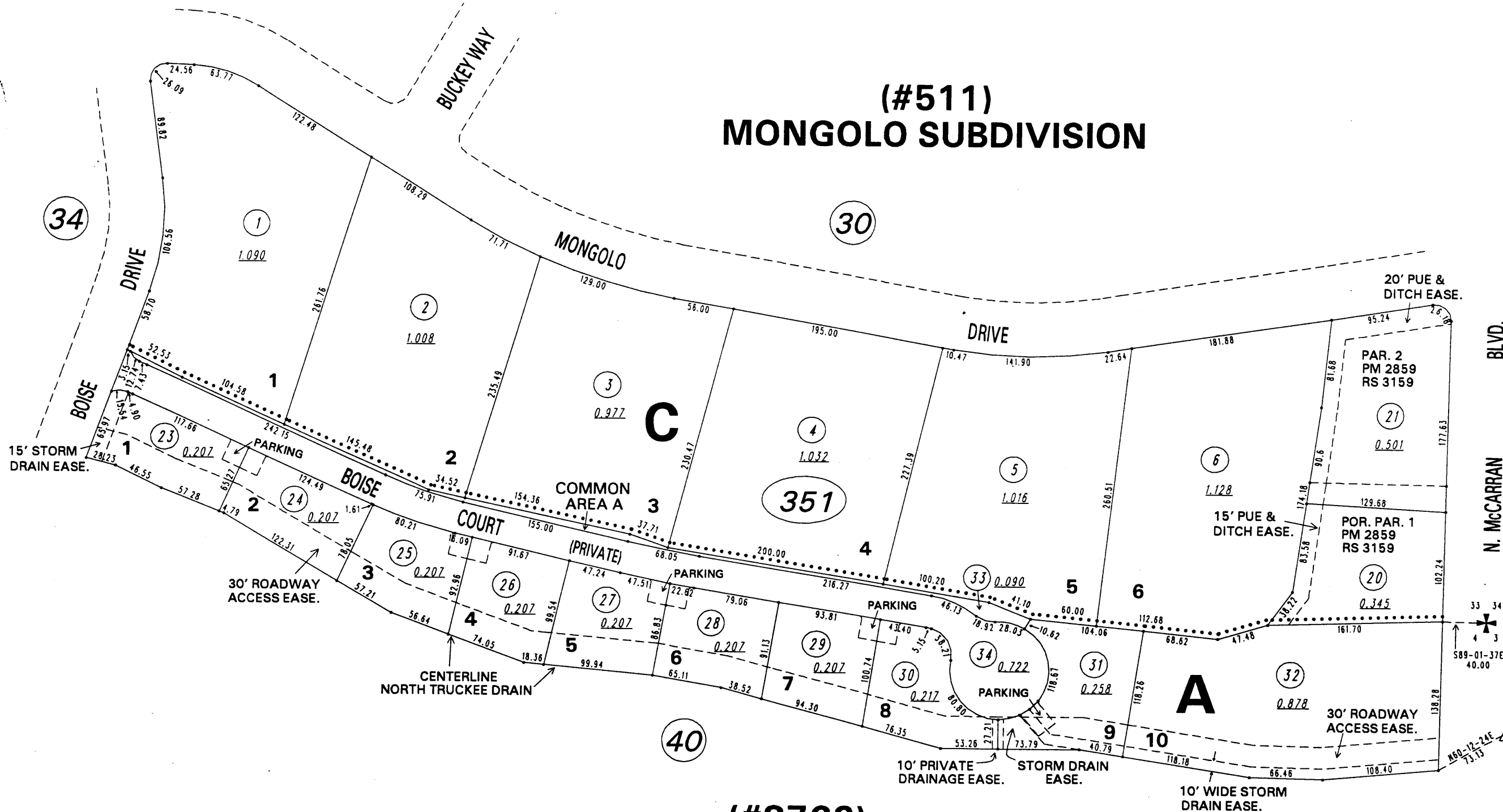


(#511) MONGOLO SUBDIVISION



(#3762) MORGAN SUBDIVISION

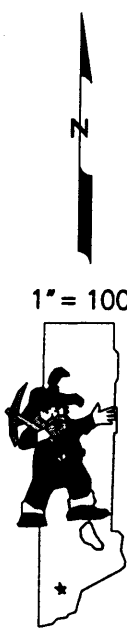
POR. OF SE 1/4 SEC. 33, T20N - R20E &
POR. OF NE 1/4 SEC. 4, T19N - R20E

BOOK 36

N. McCARRAN BLVD.

MON. #2016
N=14,875,585.514
E= 2,300,733.806

MON. #2017
N=14,872,979.661
E= 2,300,791.199



NOTE: This map is prepared for the use of the Washoe County Assessor for assessment and illustrative purposes only. It does not represent a survey of the premises. No liability is assumed as to the sufficiency or the accuracy of the data delineated hereon.

Office of Washoe County Assessor, Nevada - Robert W. McGowan

This area previously shown on _____

NOTE:
ASSESSOR'S BLOCK NUMBERS SHOWN IN ELLIPSES
ASSESSOR'S PARCEL NUMBERS SHOWN IN CIRCLES

Drawn by KS 10/29/99
Revised _____