

GREEN BRAE TERRACE SUB.
ADDITION NO. 15

23

YORK WAY

WAY

STREET

TASKER WAY

WAY

27

GREEN BRAE TERRACE SUB.
ADDITION NO. 14

33

SAWYER WAY

WAY

4th

RICHARDS WAY

WAY

32

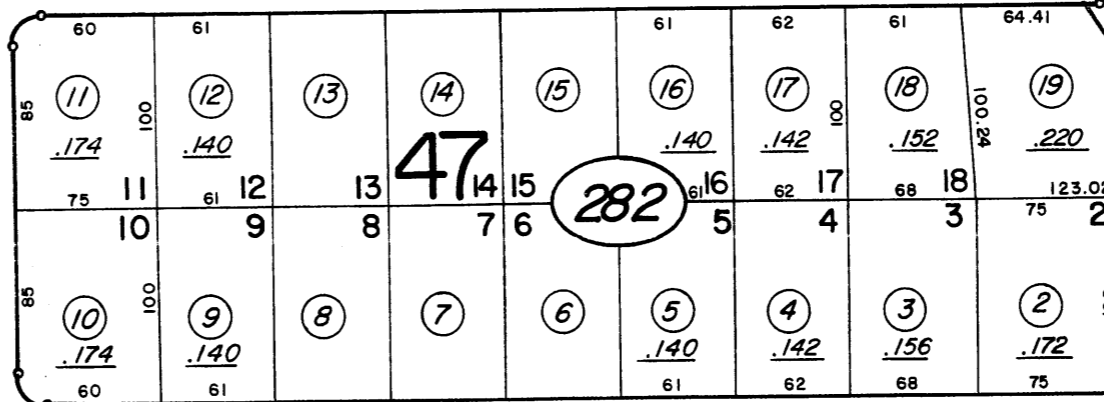
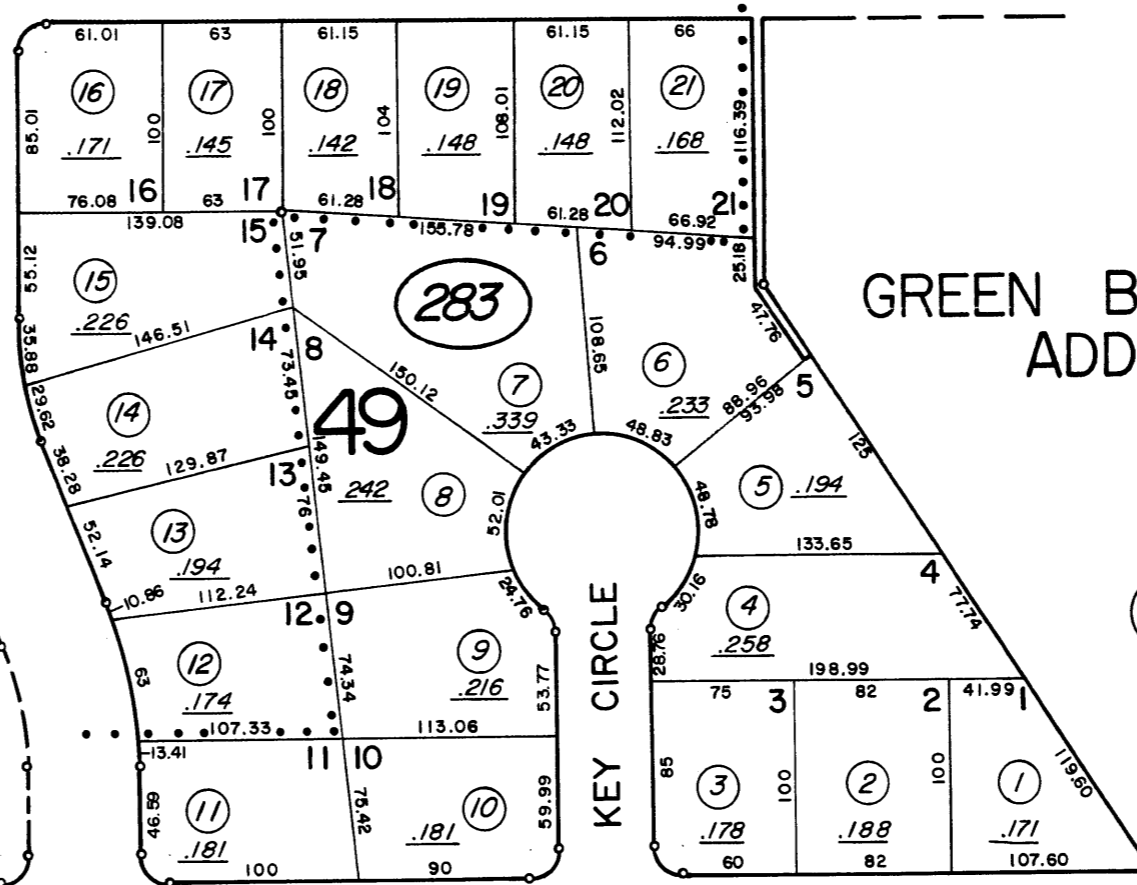
3rd ST.

1st ST.

ST.

1" = 100'

BT
5/70



NOTE: This Map is prepared for the use of the Washoe County Assessor, for Assessment and Illustrative purposes only. It does not represent survey of the Premises. No Liability is assumed as to the sufficiency or accuracy of the Date delineated hereon.

Assessor's Map County of Washoe, Nev.

NOTE - ASSESSOR'S BLOCK NUMBERS SHOWN IN ELLIPSES
ASSESSOR'S PARCEL NUMBERS SHOWN IN CIRCLES