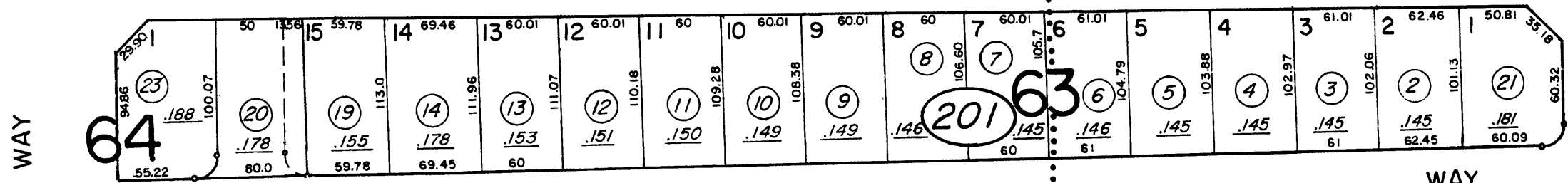


GREEN BRAE TERRACE SUBDIVISION
 ADDITION NO. 17 (15) ADDITION NO. 16

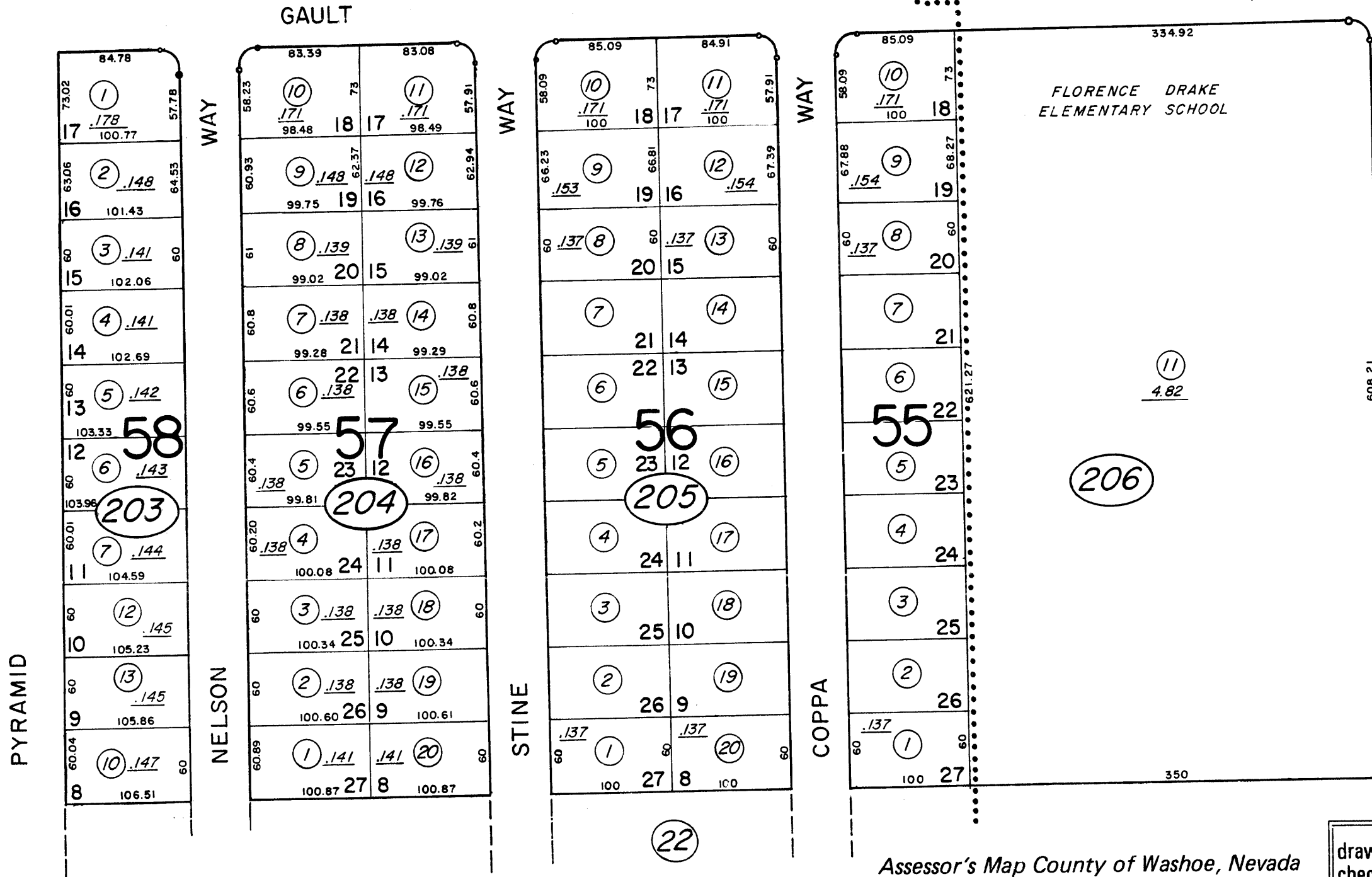
28-20

NO. MC CARRAN

BLVD.



BK. 27
 PG 53



STREET

4TH.

1" = 100'

NOTE: This Map is prepared for the use of the Washoe County Assessor for Assessment and illustrative purposes only, it does not represent survey of the premises. No liability is assumed as to the sufficiency or accuracy of the data delineated hereon.

Assessor's Map County of Washoe, Nevada

NOTE - ASSESSOR'S BLOCK NUMBERS SHOWN IN ELLIPSES
 ASSESSOR'S PARCEL NUMBERS SHOWN IN CIRCLES

drawn by	PC 6/63
checked	
revised	9/71 4/88 3/90 3/98
superseded	8/98