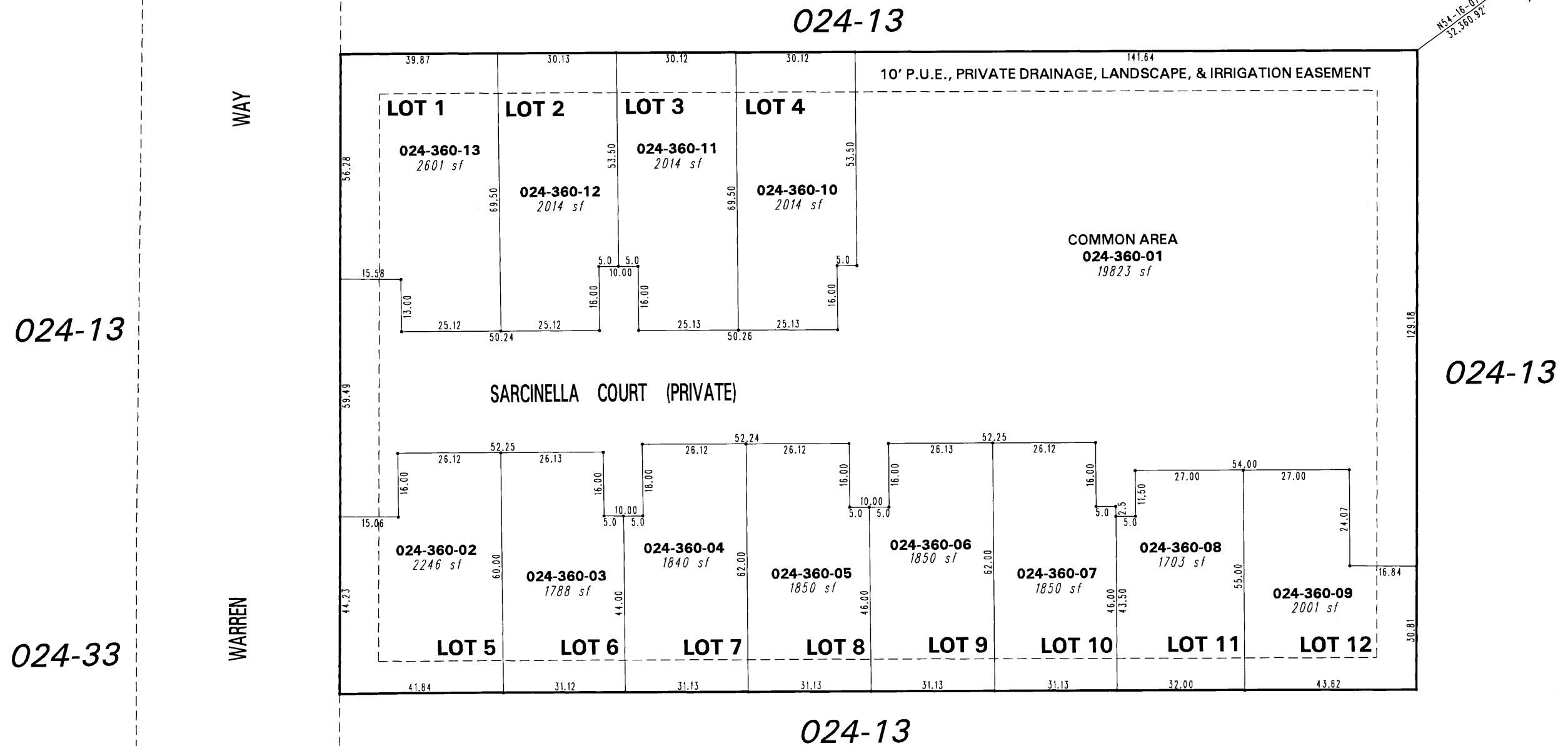
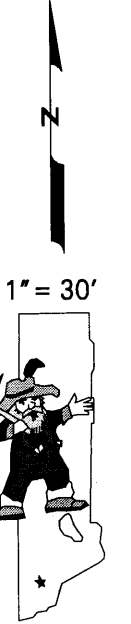


(#4859) WARREN WAY TOWNHOMES

A POR. OF THE NW 1/4 OF SEC. 25,
T19N - R19E



SPARKS
 N 14,872,727.69
 E 2,308,846.50
 GROUND



NOTE: This map is prepared for the use of the Washoe County Assessor for assessment and illustrative purposes only. It does not represent a survey of the premises. No liability is assumed as to the sufficiency or the accuracy of the data delineated hereon.

Office of Washoe County Assessor, Nevada - Joshua G. Wilson

This area previously shown on 024-13

NOTE: Areas of parcels which are less than 2 acres are shown in square feet.

Drawn by NLH 04/01/08
 Revised NLH 9/18/08