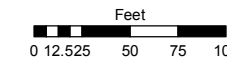


Assessor's Map Number

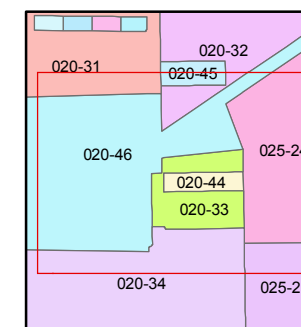
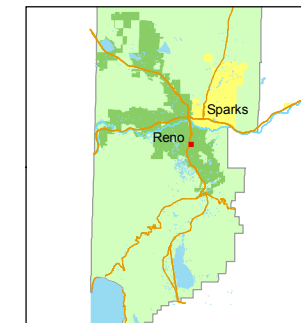
020-33

STATE OF NEVADA
WASHOE COUNTY
ASSESSOR'S OFFICE
Joshua G. Wilson, Assessor

1001 East Ninth Street
Building D
Reno, Nevada 89512
(775) 328-2231



1 inch = 100 feet



created by: CFB 02/10/2010

last updated: _____

area previously shown on map(s)

NOTE: This map was prepared for the use of the Washoe County Assessor for assessment and illustrative purposes only. It does not represent a survey of the premises. No liability is assumed as to the sufficiency or accuracy of the data delineated hereon.

(#327) SUN ACRES TRACT NO. 1

PORTION OF THE NE 1/4 OF SECTION 30 T19N R20E

ROAD

MAULDIN LANE

NEIL

MODEL

WAY

