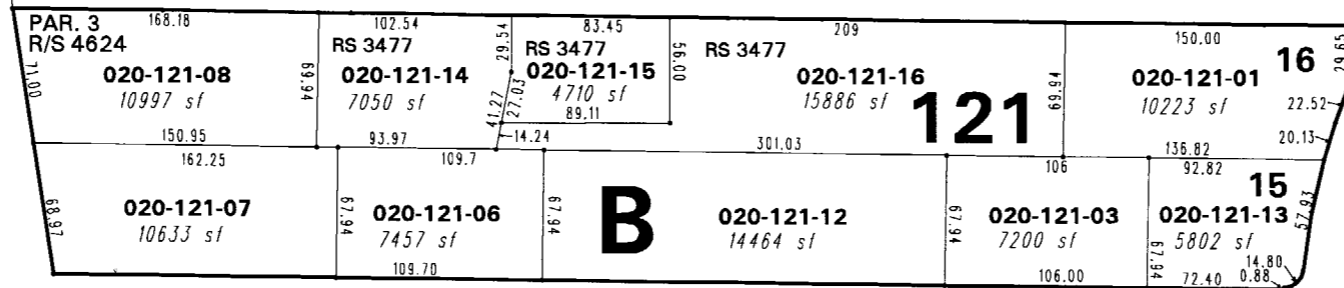


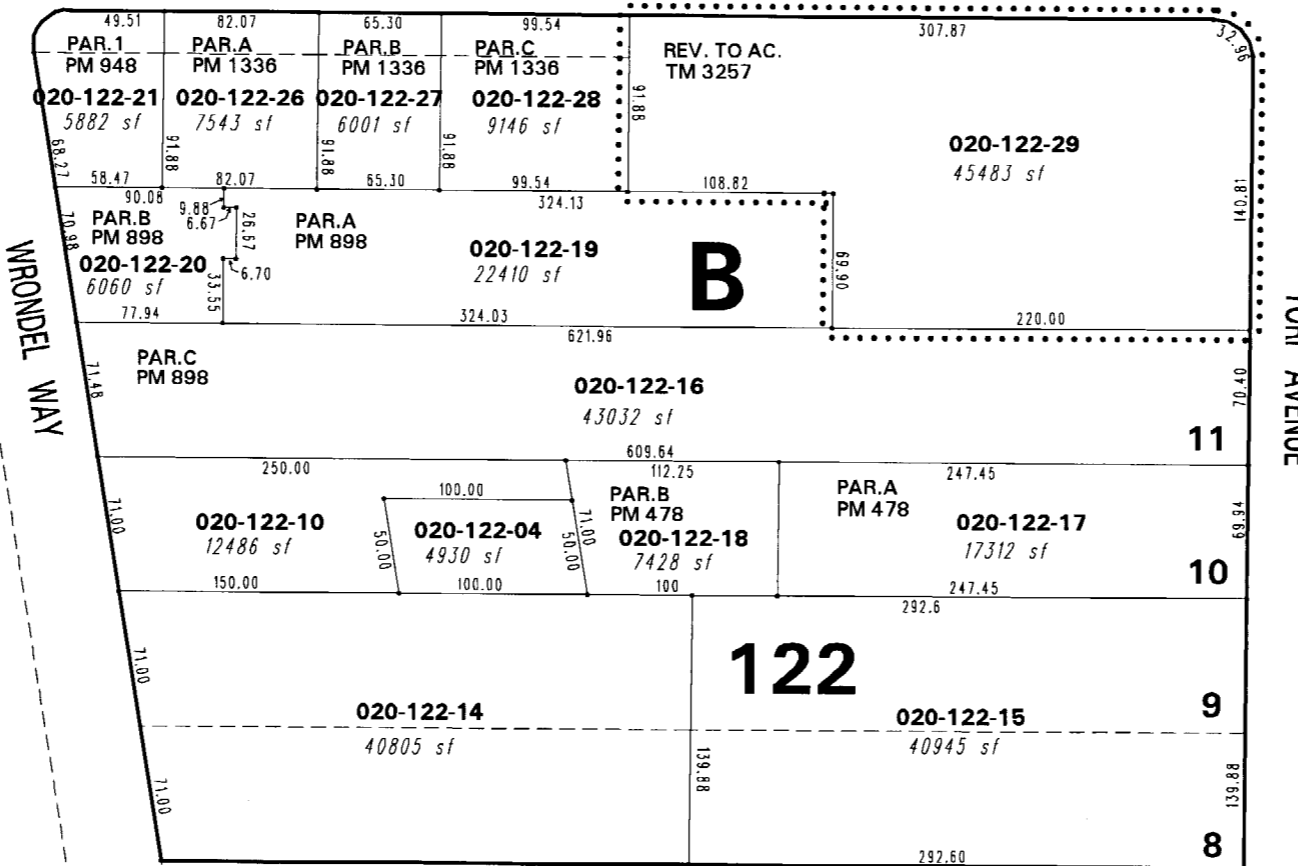
HILLBRAE TRACT UNOFFICIAL

POR. SE 1/4 SEC. 24
T19N - R19E

020-02



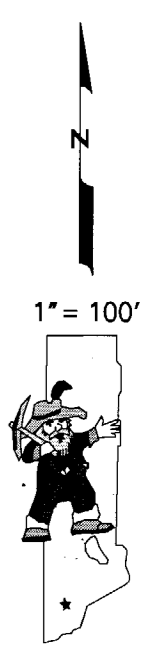
GALLAWAY LANE



020-11

020-13

020-18



NOTE: This map is prepared for the use of the Washoe County Assessor for assessment and illustrative purposes only. It does not represent a survey of the premises. No liability is assumed as to the sufficiency or the accuracy of the data delineated hereon.

Office of Washoe County Assessor, Nevada - Robert W. McGowan

This area previously shown on _____

NOTE: Areas of parcels which are less than 2 acres are shown in square feet.

Drawn by HCS 10/21/02
Revised TWT 5/30/06