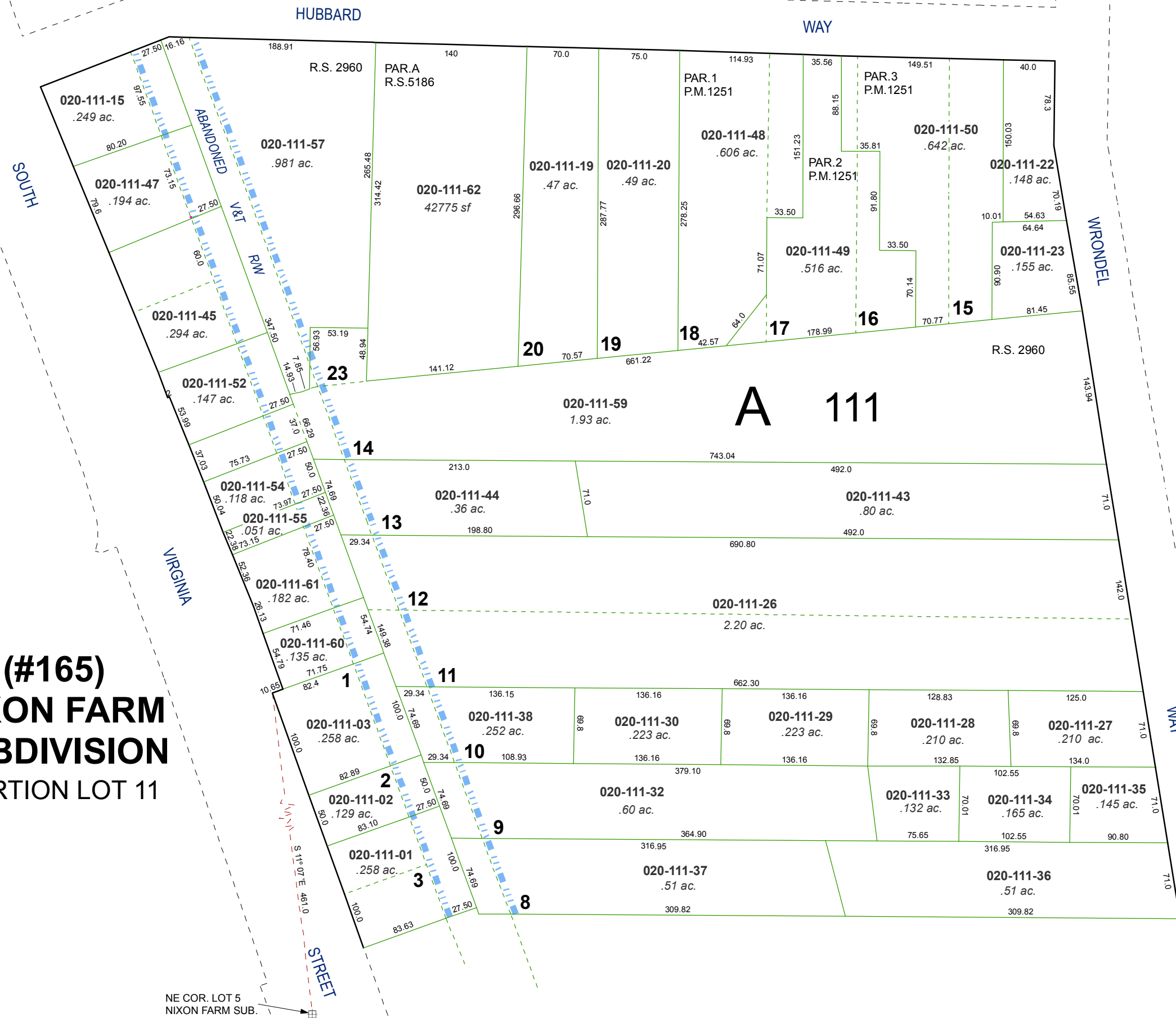


HILLBRAE TRACT - UNOFFICIAL (R.S. #29 & 30)

PORTION OF THE S 1/2 SECTION 24, T19N - R19E

**(#165)
NIXON FARM
SUBDIVISION
PORTION LOT 11**

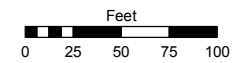


NE COR. LOT 5
NIXON FARM SUB.

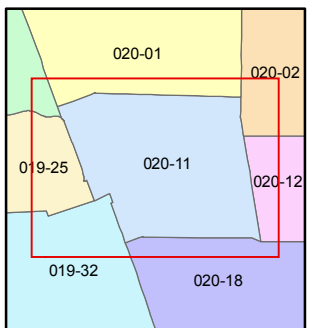
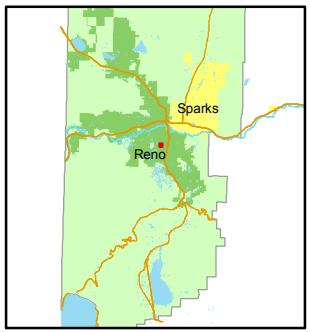
Assessor's Map Number
020-11

STATE OF NEVADA
WASHOE COUNTY
ASSESSOR'S OFFICE
Joshua G. Wilson, Assessor

1001 East Ninth Street
Building D
Reno, Nevada 89512
(775) 328-2231



1 inch = 100 feet



created by: CFB 10/26/2009

last updated: KSB 9/03/10

area previously shown on map(s)

NOTE: This map was prepared for the use of the Washoe County Assessor for assessment and illustrative purposes only. It does not represent a survey of the premises. No liability is assumed as to the sufficiency or accuracy of the data delineated hereon.