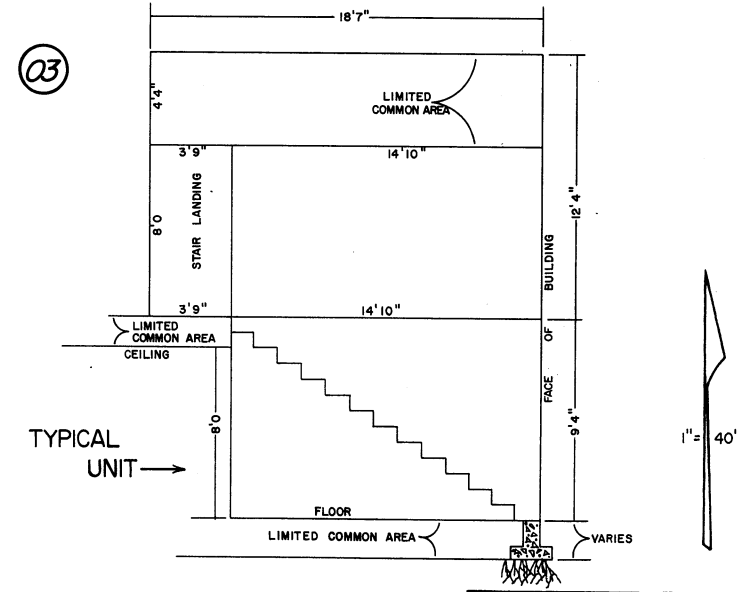


(# 2136)
 LA CASA ARMS CONDOMINIUM
 1 ST. FLOOR
 POR. SE.⁴ NE.⁴ SECTION 24
 T. 19 N. - R. 19 E.
 TO EACH A 1/65 INTEREST IN
 THE COMMON AREA



NOTE: This Map is prepared for the use of the Washoe County Assessor for Assessment and illustrative purposes only, it does not represent survey of the premises. No liability is assumed as to the sufficiency or accuracy of the data delineated hereon.