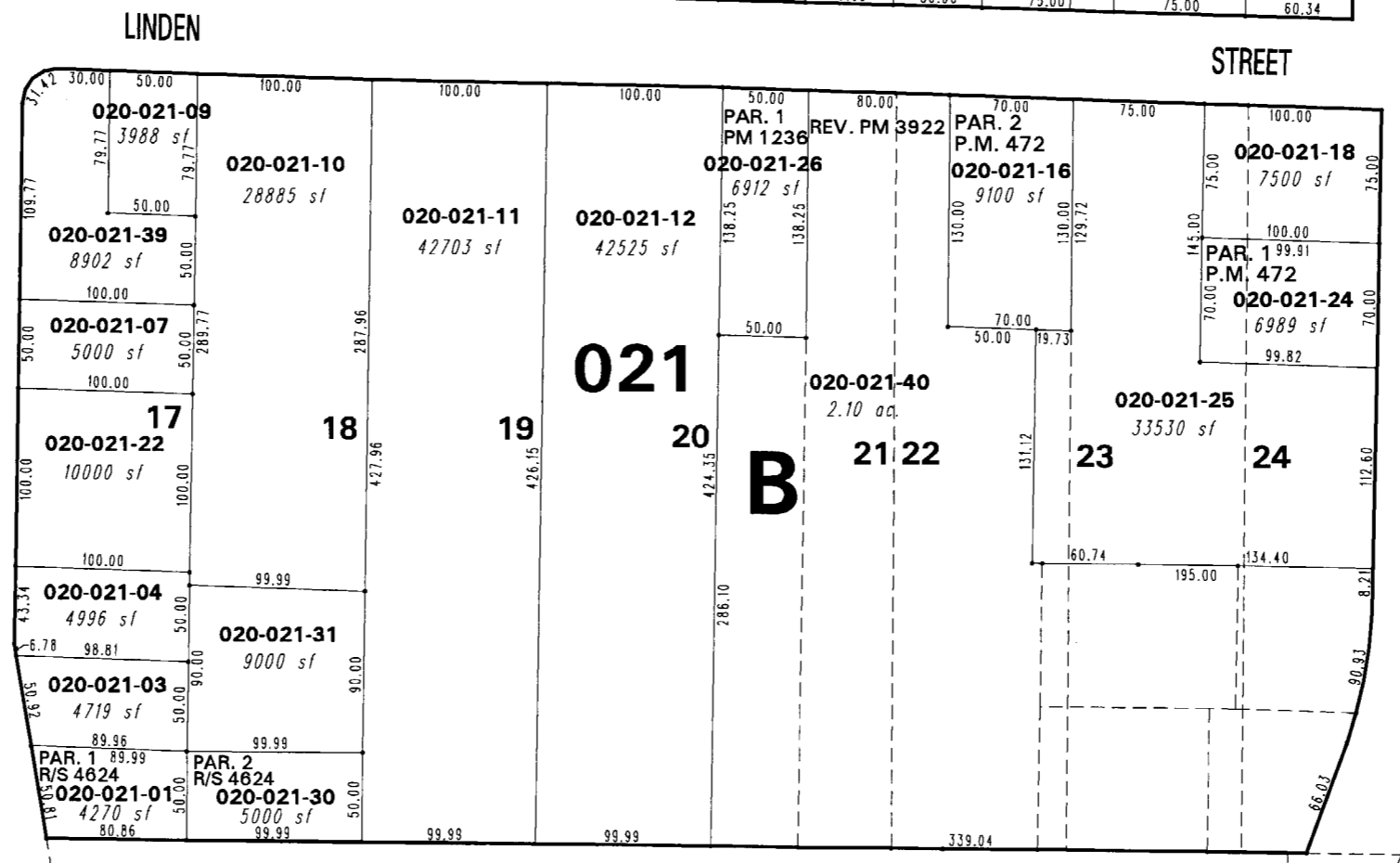


**(UNOFFICIAL)  
HILLBRAE TRACT**  
PORTION OF NE 1/4 OF SEC. 24  
T19N - R19E

LINDEN STREET  
20-01



HUBBARD WAY  
20-11

20-03

20-12

This area previously shown on

20-13

NOTE: This map is prepared for the use of the Washoe County Assessor for assessment and illustrative purposes only. It does not represent a survey of the premises. No liability is assumed as to the sufficiency or the accuracy of the data delineated hereon.

Office of Washoe County Assessor, Nevada - Robert W. McGowan

NOTE: Areas of parcels which are less than 2 acres are shown in square feet.

Drawn by TWT 10/15/02  
Revised TWT 10/30/02, 11/25/02

