

(UNOFFICIAL)
HILLBRAE TRACT
 PORTION OF THE NORTH 1/2 OF SEC. 24
 T19N - R19E

020-01

015-26

015-26

015-33

015-34

CADILLAC PLACE

015-22

LOCUST STREET

KIRMAN AVENUE

SOUTH

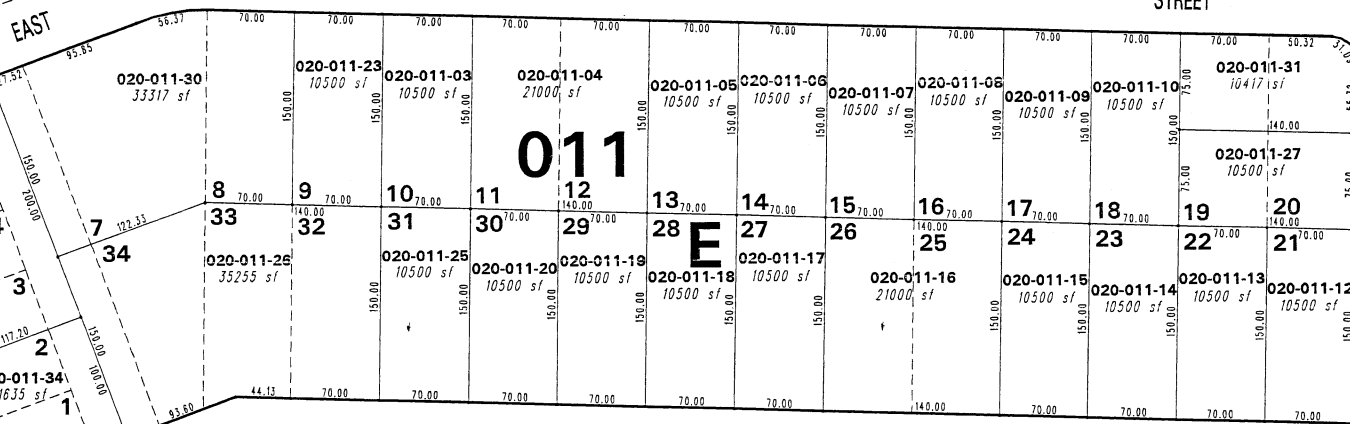
019-20

GROVE STREET

STREET

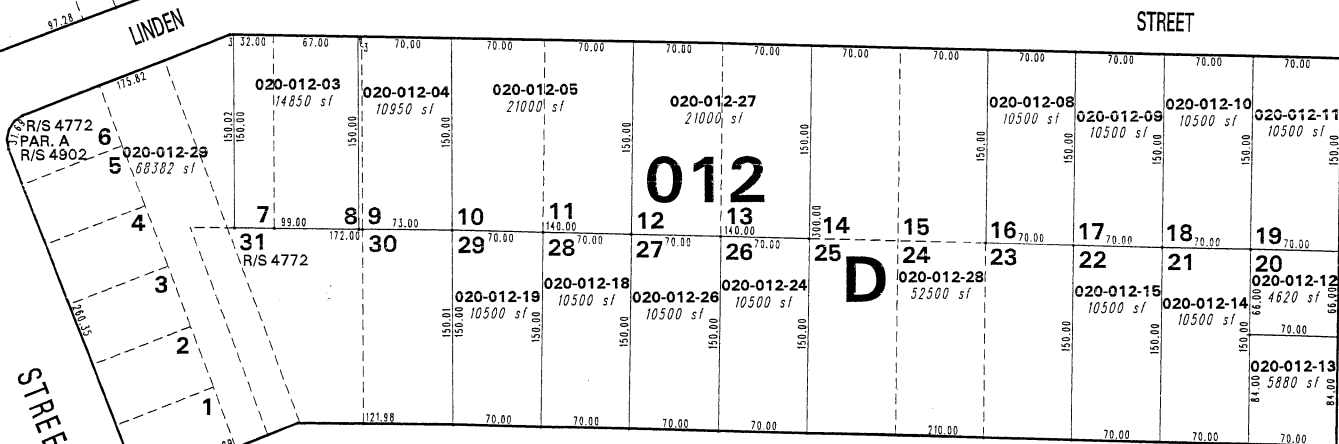
WEST GROVE STREET

VIRGINIA



WAY

CURRENT AS OF
 AUG 15 2007
 WASHOE CO. ASSESSOR



020-02

LINDEN ST.



1" = 100'



019-20

STREET

HUBBARD

WAY

020-11

This area previously shown on _____

NOTE: This map is prepared for the use of the Washoe County Assessor for assessment and illustrative purposes only. It does not represent a survey of the premises. No liability is assumed as to the sufficiency or the accuracy of the data delineated herein.

Office of Washoe County Assessor, Nevada - Joshua G. Wilson

NOTE: Areas of parcels which are less than 2 acres are shown in square feet.

Drawn by *JWT* 05/09/07
 Revised *TWT* 6/7/07