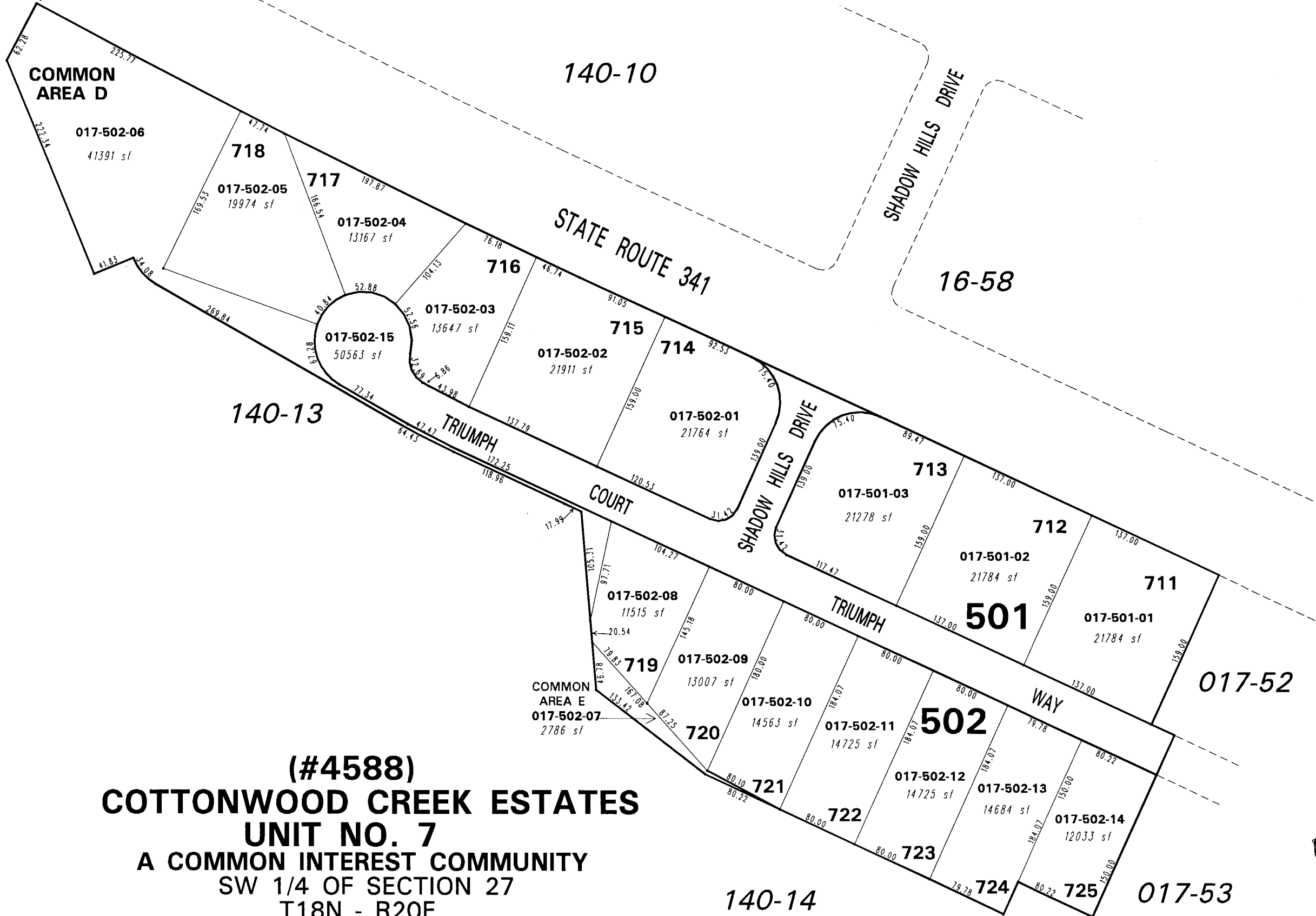


17-49



(#4588)
COTTONWOOD CREEK ESTATES
UNIT NO. 7
 A COMMON INTEREST COMMUNITY
 SW 1/4 OF SECTION 27
 T18N - R20E

NOTE: This map is prepared for the use of the Washoe County Assessor for assessment and illustrative purposes only. It does not represent a survey of the premises. No liability is assumed as to the sufficiency or the accuracy of the data delineated hereon.

Office of Washoe County Assessor, Nevada - Joshua G. Wilson

This area previously shown on 17-01

NOTE: Areas of parcels which are less than 2 acres are shown in square feet.

Drawn by PK 01/23/06
 Revised NLH 1/10/08