

**(#815)
CUTLER
SUBDIVISION**

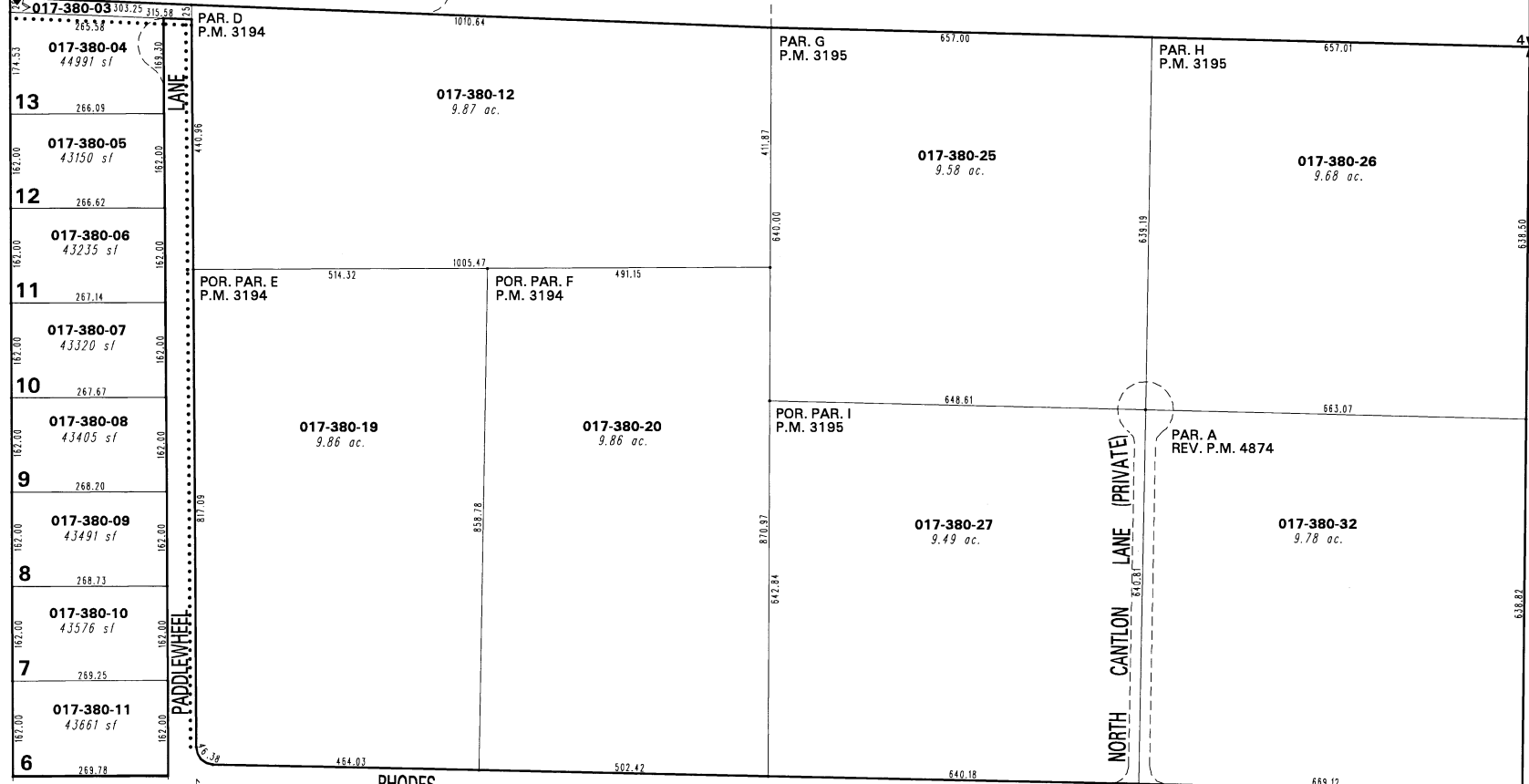
**NORTH 1/2 OF THE SOUTHEAST 1/4
OF SECTION 4, T17N - R20E**

017-32

017-39

CENTER OF
SEC. 4

ANNIE LANE (PRIVATE)



017-33

050-52

RHODES

ROAD

017-37

This area previously shown on _____

NOTE: This map is prepared for the use of the Washoe County Assessor for assessment and illustrative purposes only. It does not represent a survey of the premises. No liability is assumed as to the sufficiency or the accuracy of the data delineated hereon.

Office of Washoe County Assessor, Nevada - Joshua G. Wilson

NOTE: Areas of parcels which are less than 2 acres are shown in square feet.

Drawn by IWT 09/11/06
 Revised TWT 1/2/08

