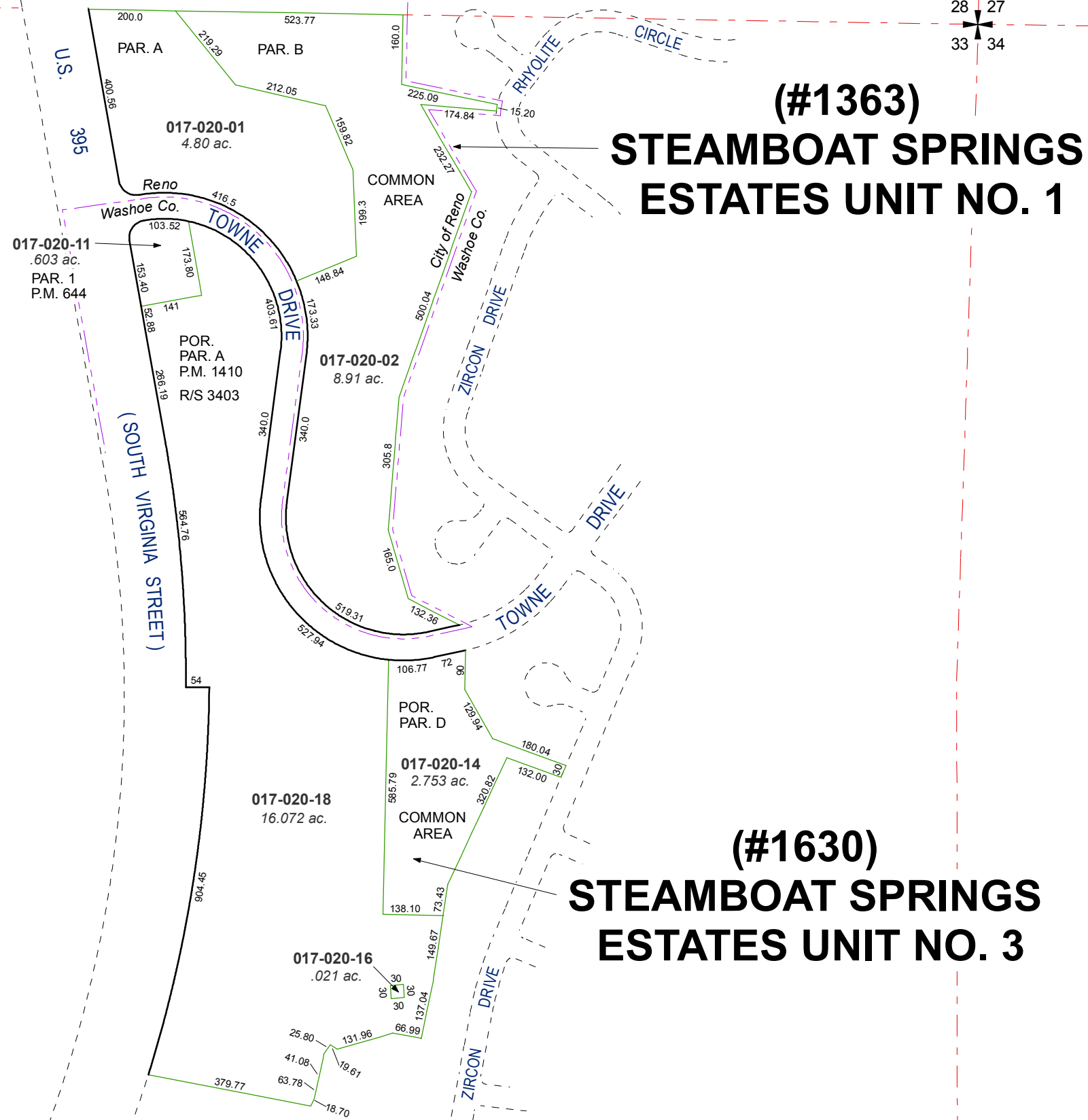


PORTION OF NE 1/4 OF SEC. 33, T18N - R20E

ANNEX. TM 4974
ORD. #6189



(#1363)
STEAMBOAT SPRINGS
ESTATES UNIT NO. 1

(#1630)
STEAMBOAT SPRINGS
ESTATES UNIT NO. 3

28
33

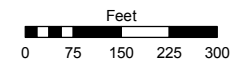
28 27
33 34

33 34

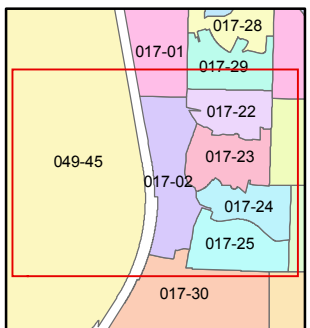
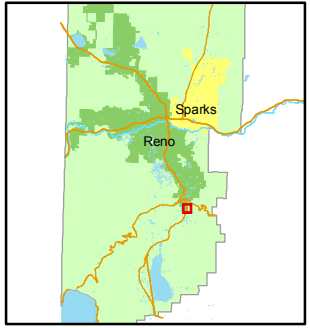
Assessor's Map Number
017-02

STATE OF NEVADA
WASHOE COUNTY
ASSESSOR'S OFFICE
Joshua G. Wilson, Assessor

1001 East Ninth Street
Building D
Reno, Nevada 89512
(775) 328-2231



1 inch = 300 feet



created by: KSB 7/13/11

last updated: _____

area previously shown on map(s)

NOTE: This map was prepared for the use of the Washoe County Assessor for assessment and illustrative purposes only. It does not represent a survey of the premises. No liability is assumed as to the sufficiency or accuracy of the data delineated hereon.