

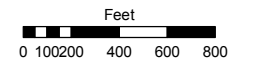
# AMENDED DIVISION OF LAND MAP NO. 25

PORTION SECTIONS 22 & 23  
T18N - R20E

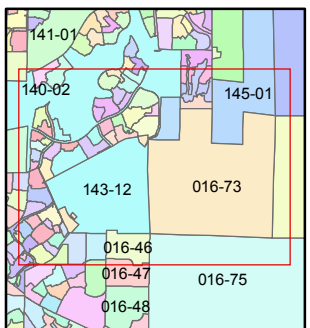
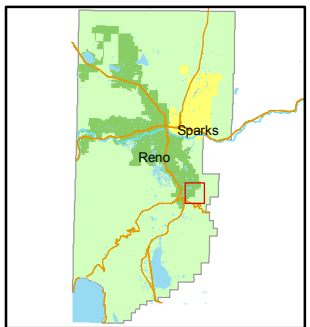
Assessor's Map Number  
**016-73**

STATE OF NEVADA  
**WASHOE COUNTY**  
ASSESSOR'S OFFICE  
Joshua G. Wilson, Assessor

1001 East Ninth Street  
Building D  
Reno, Nevada 89512  
(775) 328-2231



1 inch = 800 feet



created by: *NLH 10/07/2009*

last updated: *TWT 2/04/10 NLH 7/20/11*

area previously shown on map(s)

016-36

NOTE: This map was prepared for the use of the Washoe County Assessor for assessment and illustrative purposes only. It does not represent a survey of the premises. No liability is assumed as to the sufficiency or accuracy of the data delineated herein.

