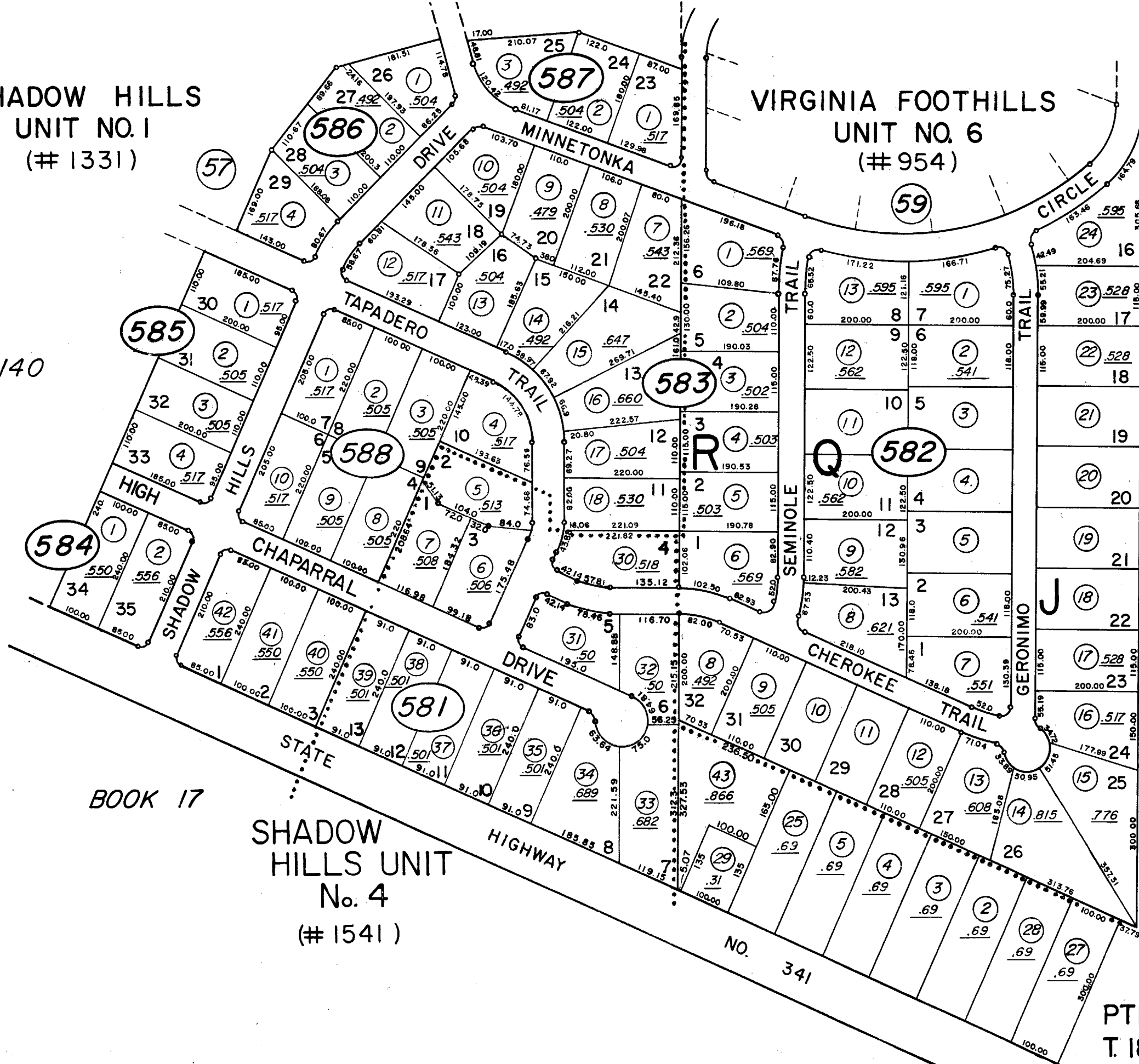


SHADOW HILLS  
UNIT NO. 1  
(# 1331)

VIRGINIA FOOTHILLS  
UNIT NO. 6  
(# 954)

BOOK 140



BOOK 17

SHADOW  
HILLS UNIT  
No. 4  
(# 1541)

BOOK 17

Assessor's Map County of Washoe, Nev.

PTN. SE 1/4 SEC. 27  
T. 18 N - R. 20 E.

NOTE: This Map is prepared for the use of the Washoe County Assessor, for Assessment and Illustrative purposes only. It does not represent survey of the Premises. No Liability is assumed as to the sufficiency or accuracy of the Data delineated hereon.

NOTE - ASSESSOR'S BLOCK NUMBERS SHOWN IN ELLIPSES  
ASSESSOR'S PARCEL NUMBERS SHOWN IN CIRCLES