

008-49

CASTLE

WAY

008-04

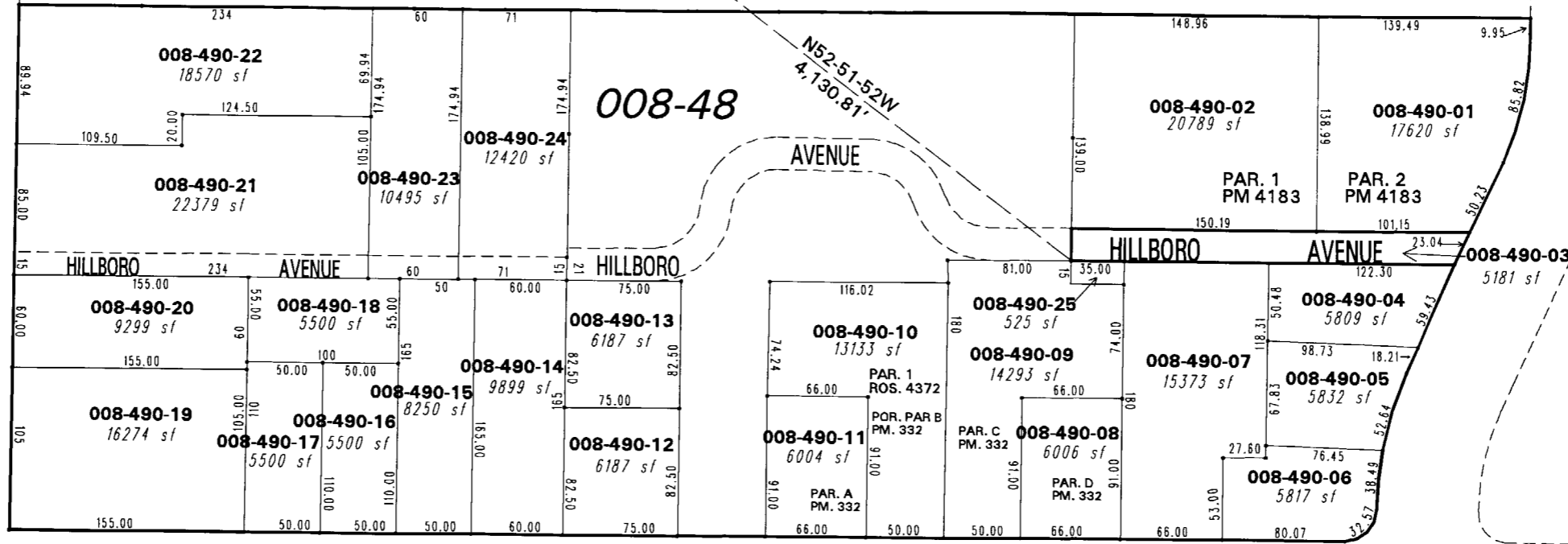
**T19 - R19E**  
POR. NE 1/4 OF SECTION 1

STREET

STREET

HILLBORO AVENUE

008-03



008-09

CARVILLE

DRIVE

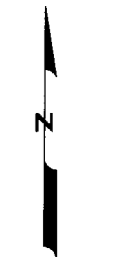
008-08

008-08

SUTRO

ARNOLD DRIVE

MONTELLO



1" = 100'



NOTE: This map is prepared for the use of the Washoe County Assessor for assessment and illustrative purposes only. It does not represent a survey of the premises. No liability is assumed as to the sufficiency or the accuracy of the data delineated hereon.

Office of Washoe County Assessor, Nevada - Robert W. McGowan

This area previously shown on 008-08

NOTE: Areas of parcels which are less than 2 acres are shown in square feet.

Drawn by PK 05/06/04  
 Revised \_\_\_\_\_