

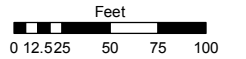
PORTION OF NW 1/4 SECTION 12, T19N - R19E & FORMER RR R/W LEASED AREAS

Assessor's Map Number

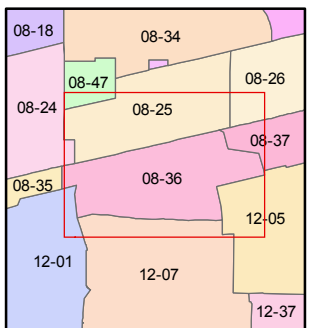
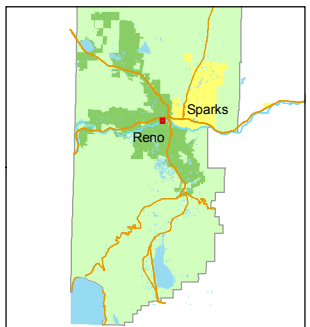
008-36

STATE OF NEVADA
WASHOE COUNTY
ASSESSOR'S OFFICE
 Joshua G. Wilson, Assessor

1001 East Ninth Street
 Building D
 Reno, Nevada 89512
 (775) 328-2231



1 inch = 100 feet

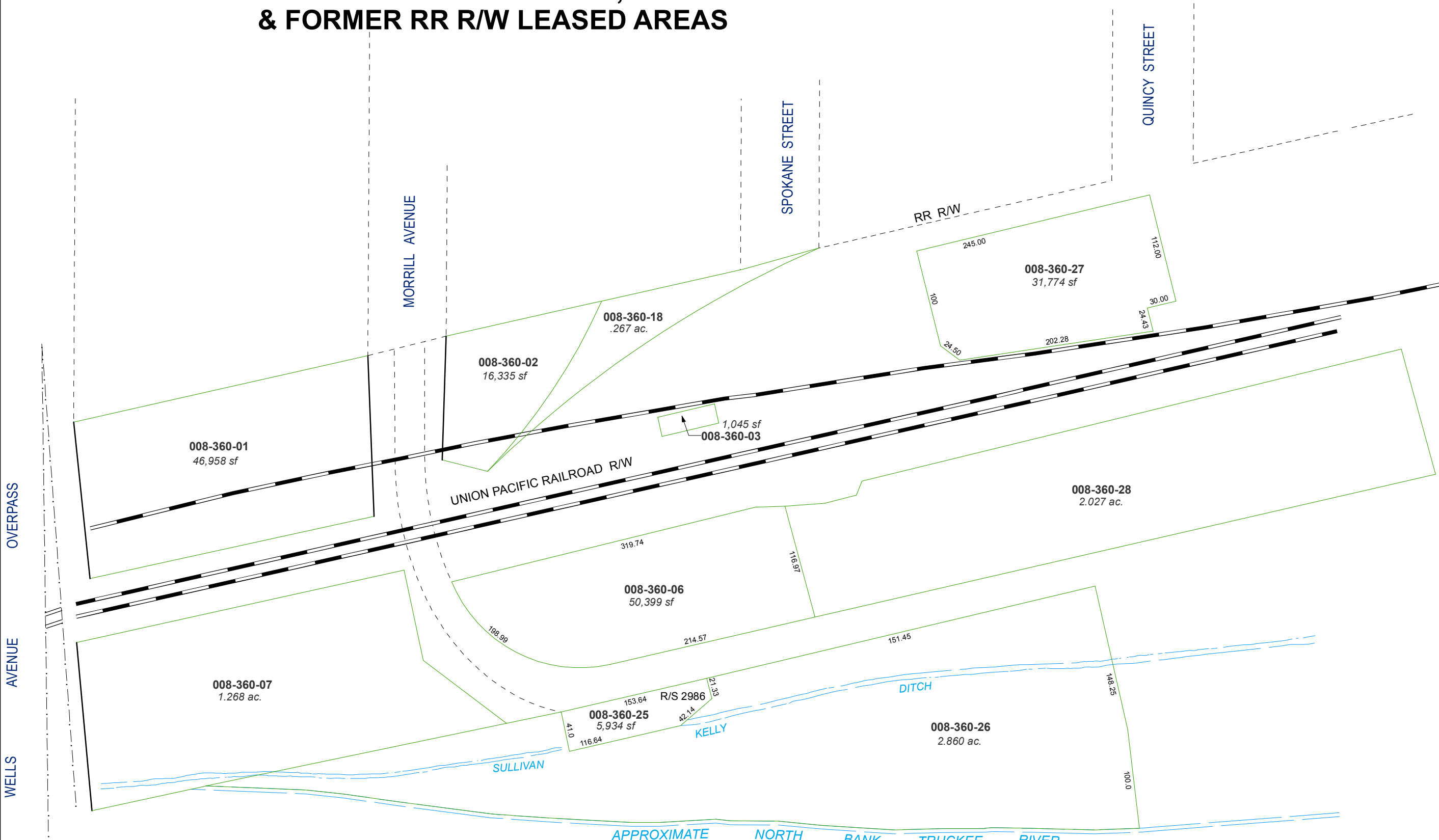


created by: CFB 07/23/2009

last updated: CFB 01/14/2010

area previously shown on map(s)

NOTE: This map was prepared for the use of the Washoe County Assessor for assessment and illustrative purposes only. It does not represent a survey of the premises. No liability is assumed as to the sufficiency or accuracy of the data delineated hereon.



OVERPASS
 AVENUE
 WELLS

MORRILL AVENUE

SPOKANE STREET

QUINCY STREET

RR R/W

UNION PACIFIC RAILROAD R/W

SULLIVAN

KELLY

DITCH

APPROXIMATE NORTH BANK TRUCKEE RIVER