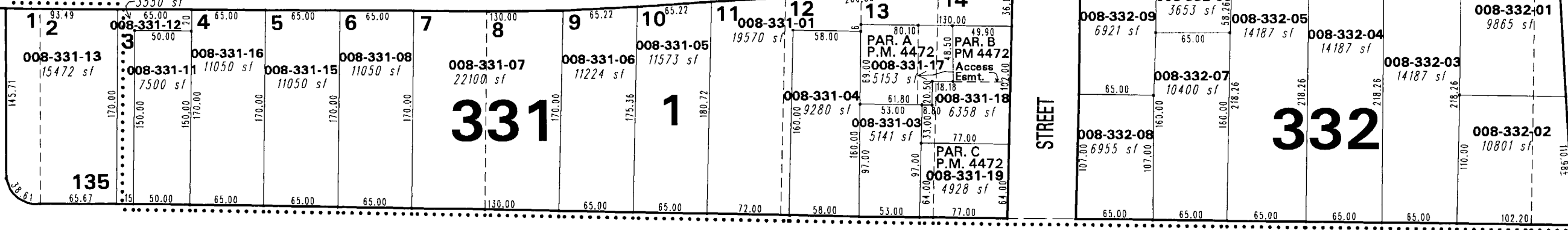
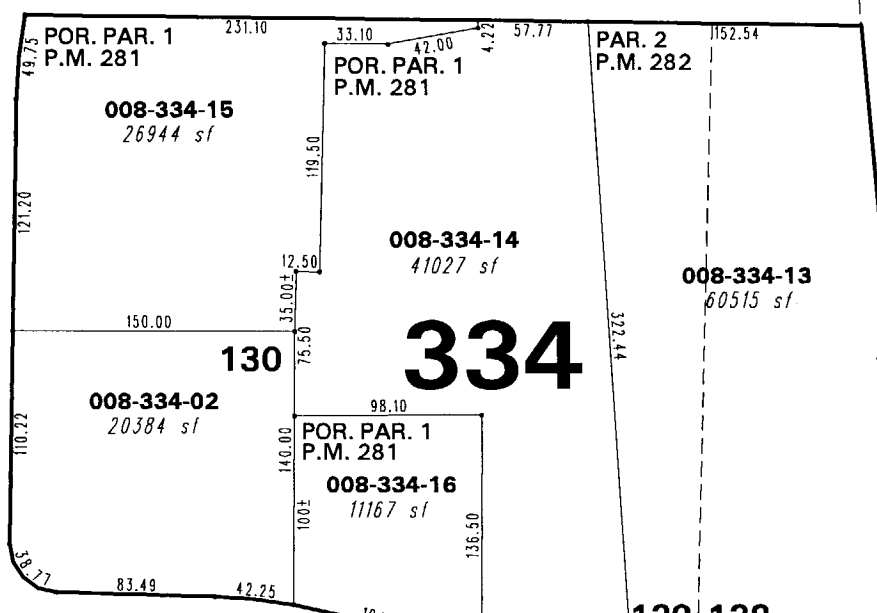
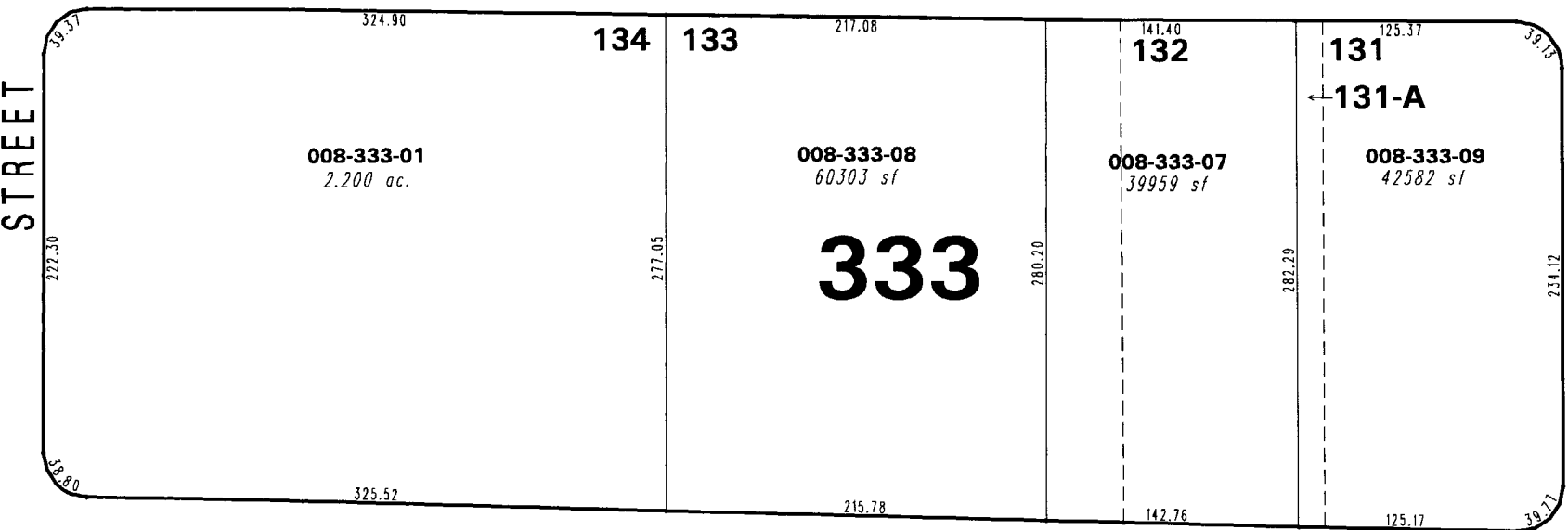


INTERSTATE 80

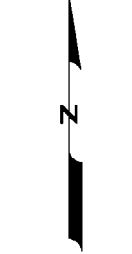
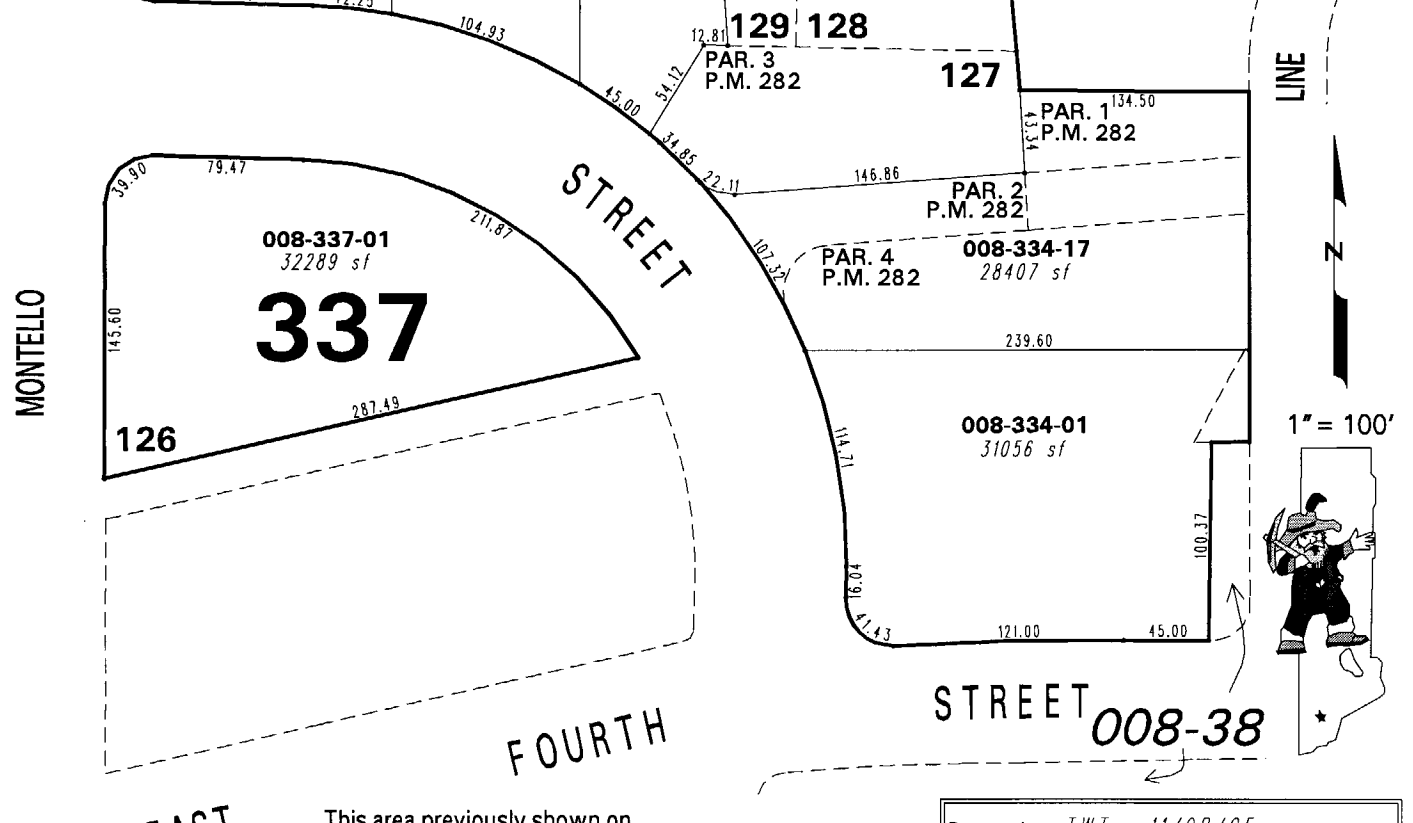
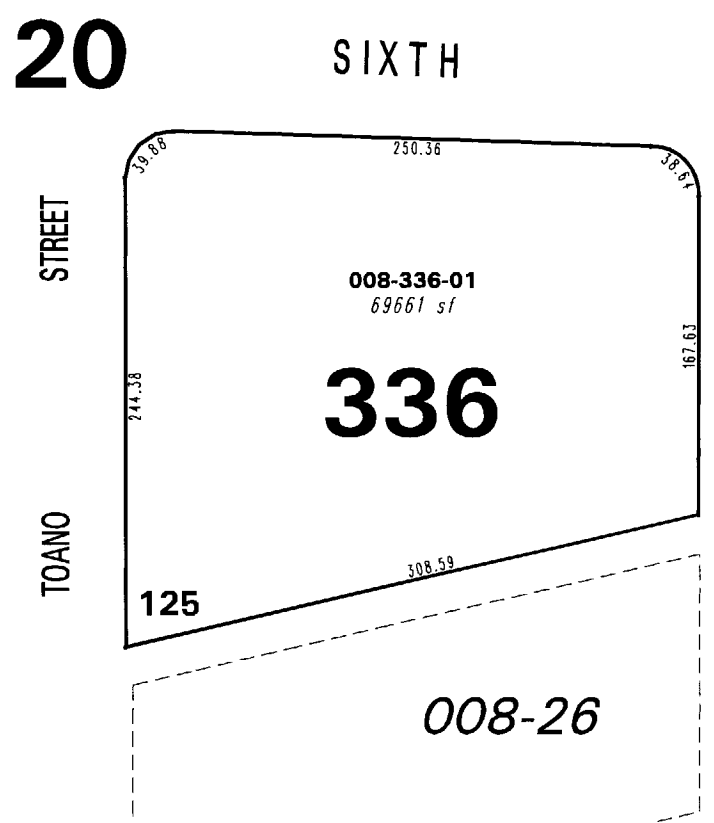
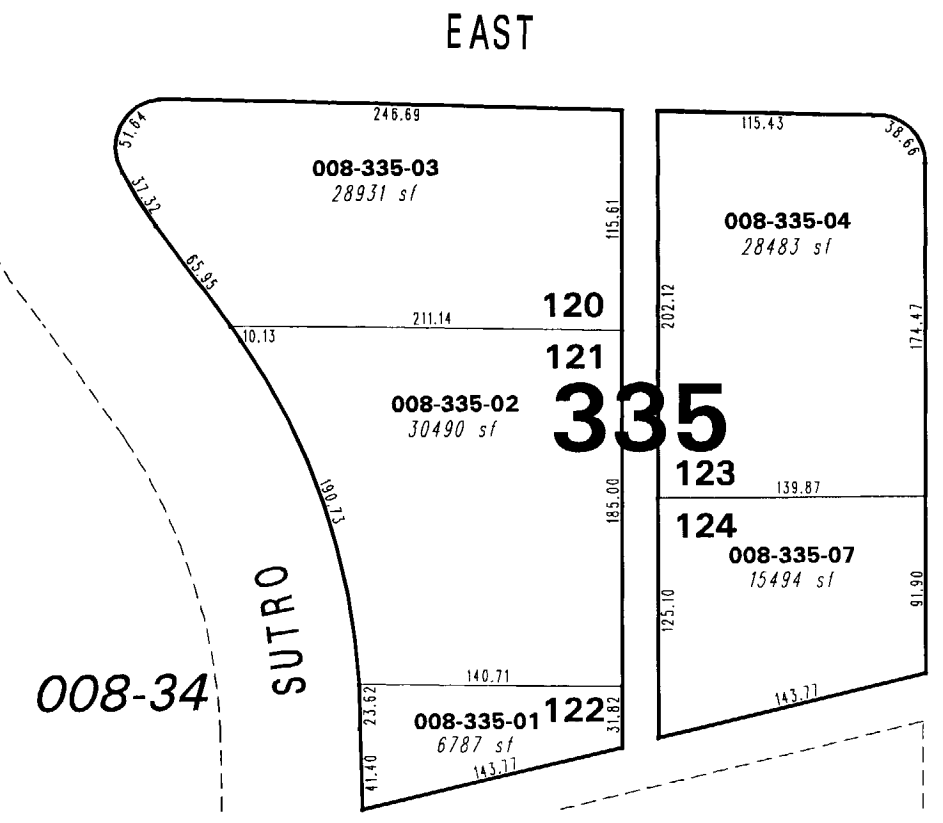
008-33



(UNOFFICIAL) LEETE SYNDICATE PORT. OF SE 1/4 OF SEC. 1 & NE 1/4 OF SEC. 12, T19N - R19E



(#1378-79) DOWNTOWN SERVICE CENTER



1" = 100'



NOTE: This map is prepared for the use of the Washoe County Assessor for assessment and illustrative purposes only. It does not represent a survey of the premises. No liability is assumed as to the sufficiency or the accuracy of the data delineated hereon.

Office of Washoe County Assessor, Nevada - Robert W. McGowan

This area previously shown on \_\_\_\_\_

NOTE: Areas of parcels which are less than 2 acres are shown in square feet.

Drawn by TWT 11/08/05 Revised \_\_\_\_\_