

(#753)
 SILVERADA
 SUBDIVISION
 No. 5- &
 PORTION OF
 SE 1/4 SEC.
 6
 T19N-R20E

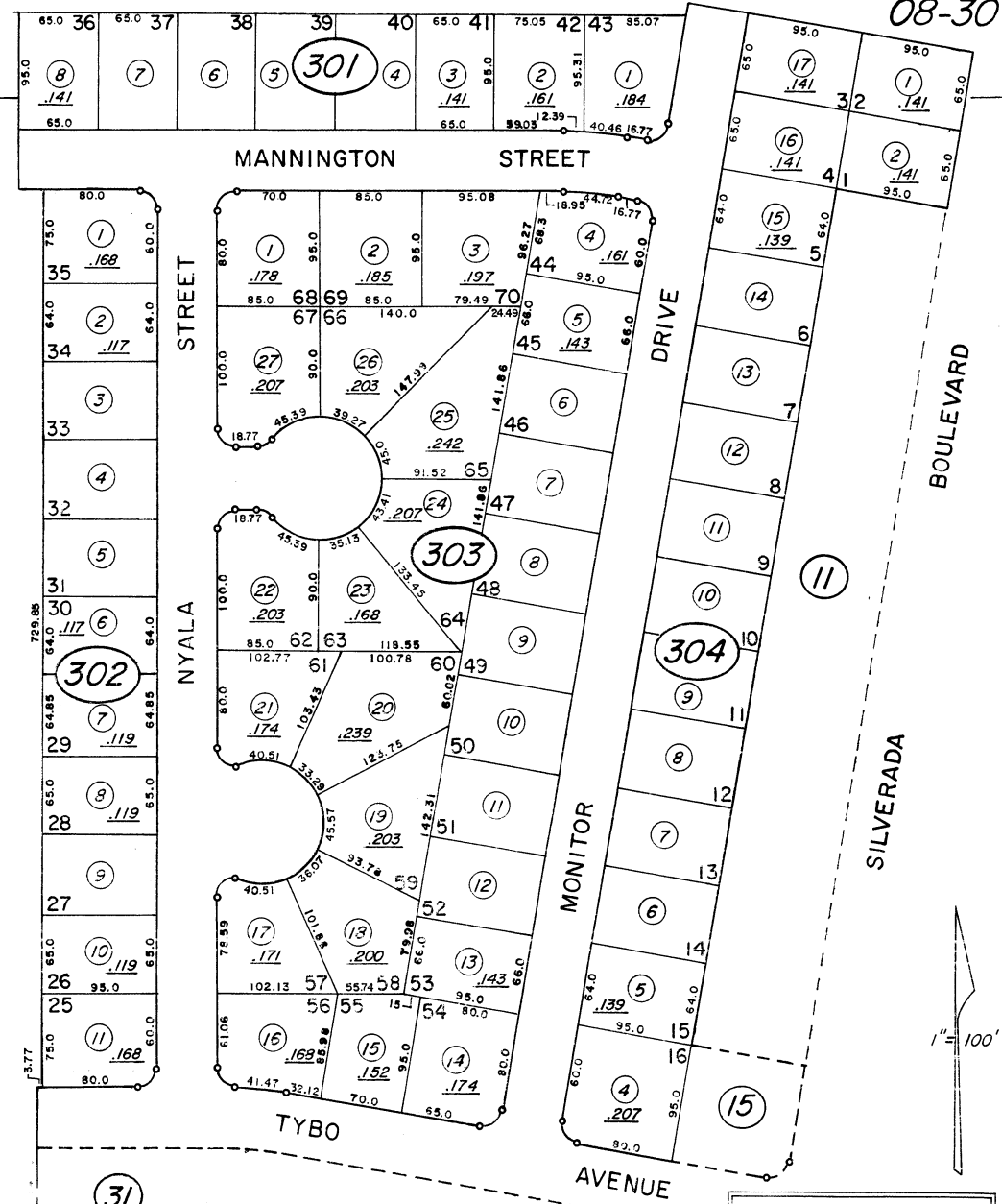
MEDIAN \bar{c} U.S. 395

RAMP NO. 19 TO U.S. 395 NORTH

EAST-WEST \bar{c} SECTION 6

RAMPS NO. 17 & 18 TO I.R. 80

08-30



NOTE: This Map is prepared for the use of the Washoe County Assessor for Assessment and illustrative purposes only, it does not represent survey of the premises. No liability is assumed as to the sufficiency or accuracy of the data delineated hereon.

Assessor's Map County of Washoe, Nevada

NOTE - ASSESSOR'S BLOCK NUMBERS SHOWN IN ELLIPSES
 ASSESSOR'S PARCEL NUMBERS SHOWN IN CIRCLES

drawn by	S.OPPIO	6/74
checked		
revised	4/96	
superseded		