

MORRILL - SMITH ADDITION TO RENO

PORTION OF THE N 1/2 SEC. 12

T19N - R19E

008-34

EAST FIFTH STREET

008-24

008-47

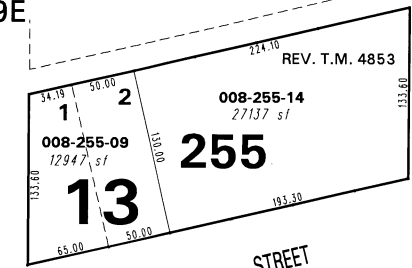
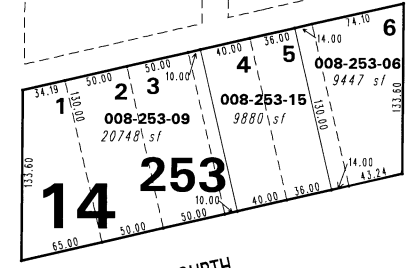
008-34

008-39

AVENUE

STREET

STREET



AVENUE

EAST

FOURTH

STREET

008-2

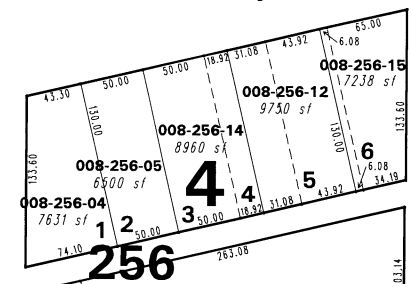
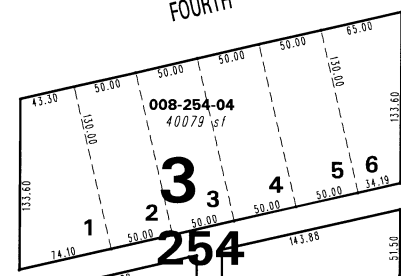
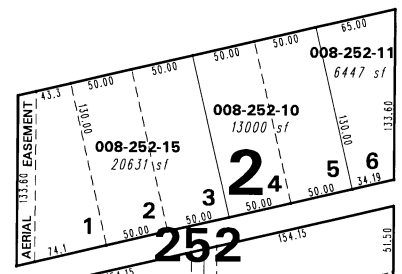
NORTH

WELLS

MORRILL

SPOKANE

QUINCY



008-24

008-36

1" = 100'



NOTE: This map is prepared for the use of the Washoe County Assessor for assessment and illustrative purposes only. It does not represent a survey of the premises. No liability is assumed as to the sufficiency or the accuracy of the data delineated hereon.

Office of Washoe County Assessor, Nevada - Joshua G. Wilson

This area previously shown on _____

NOTE: Areas of parcels which are less than 2 acres are shown in square feet.

Drawn by JL 05/31/07
 Revised TWT 4/1/08, 4/2/08