

09

SILVERADA SUBDIVISION No. 1

CARVILLE

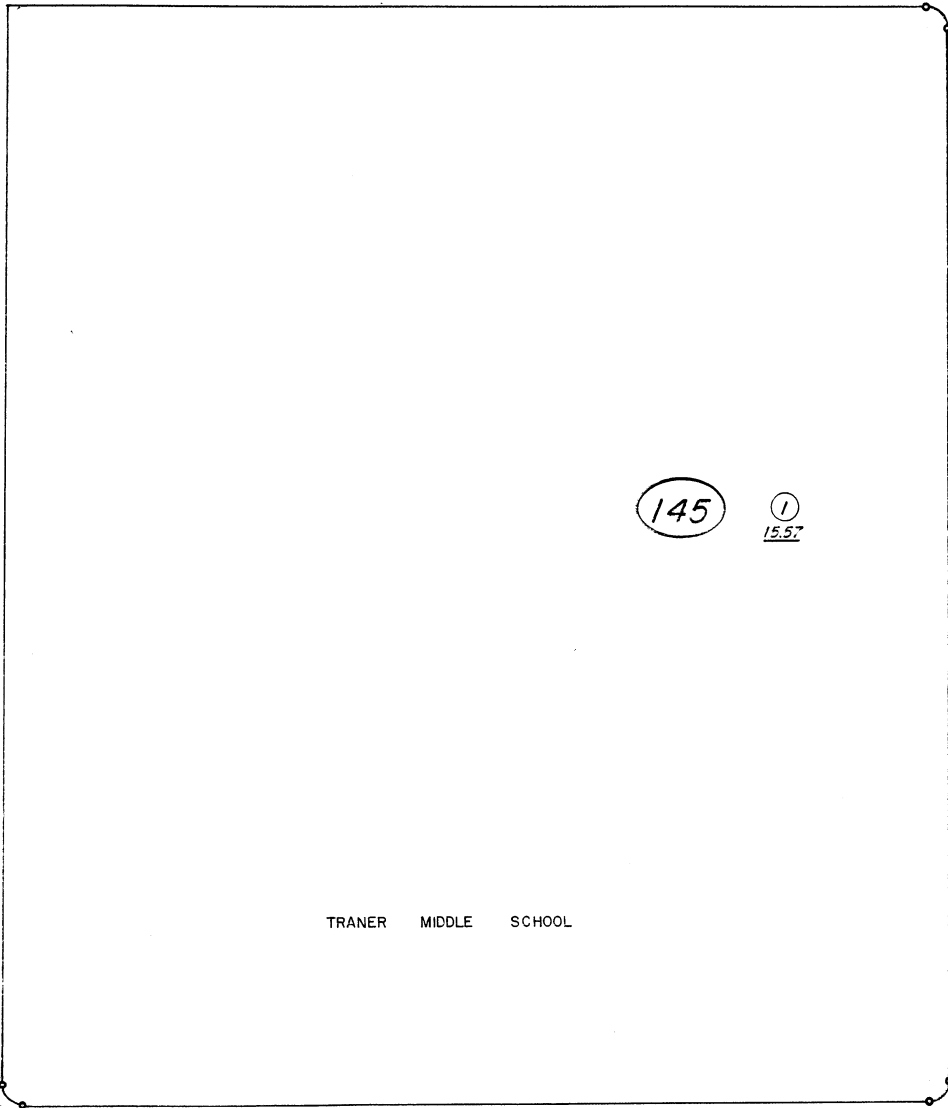
DRIVE

06

SILVERADA SUB. No. 2

41

08-14

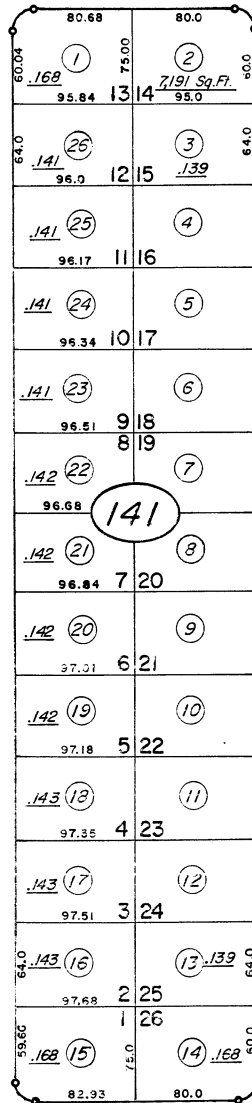


TRANER MIDDLE SCHOOL

EAST

STREET

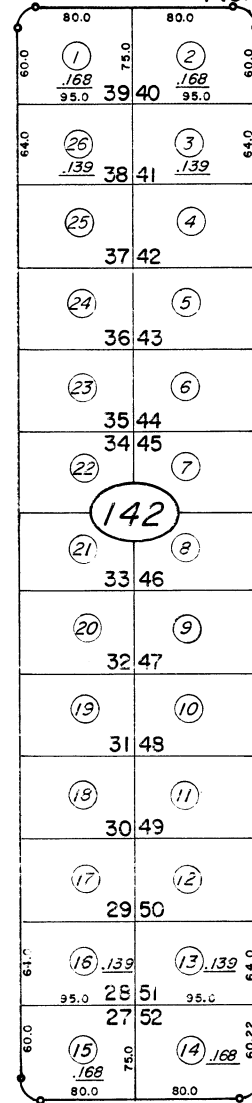
BARSTOW



TENTH

STREET

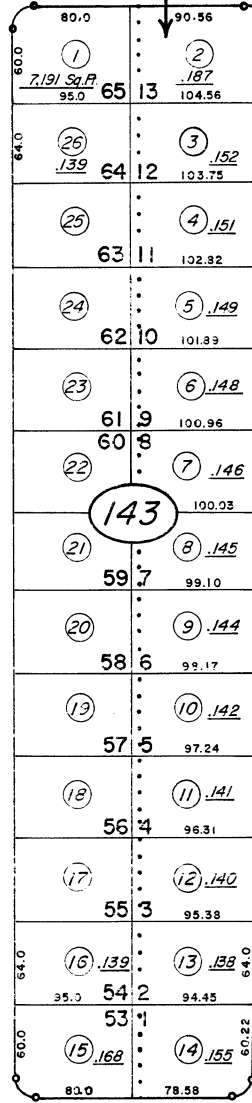
GOLDFIELD



STREET

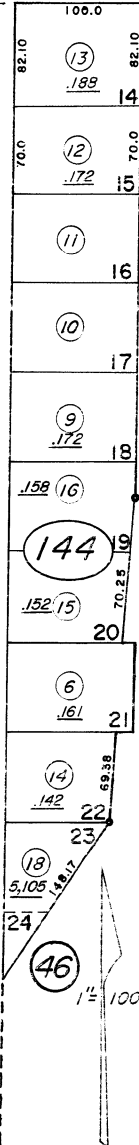
STREET

MANHATTAN



STREET

BUTLER



NOTE: This Map is prepared for the use of the Washoe County Assessor for Assessment and illustrative purposes only, it does not represent survey of the premises. No liability is assumed as to the sufficiency or accuracy of the data delineated herein.

Assessor's Map County of Washoe, Nevada

NOTE - ASSESSOR'S BLOCK NUMBERS SHOWN IN ELLIPSES  
ASSESSOR'S PARCEL NUMBERS SHOWN IN CIRCLES

drawn by S.OPPIO 7/74  
checked  
revised TWT 4/17/03  
superseded

21