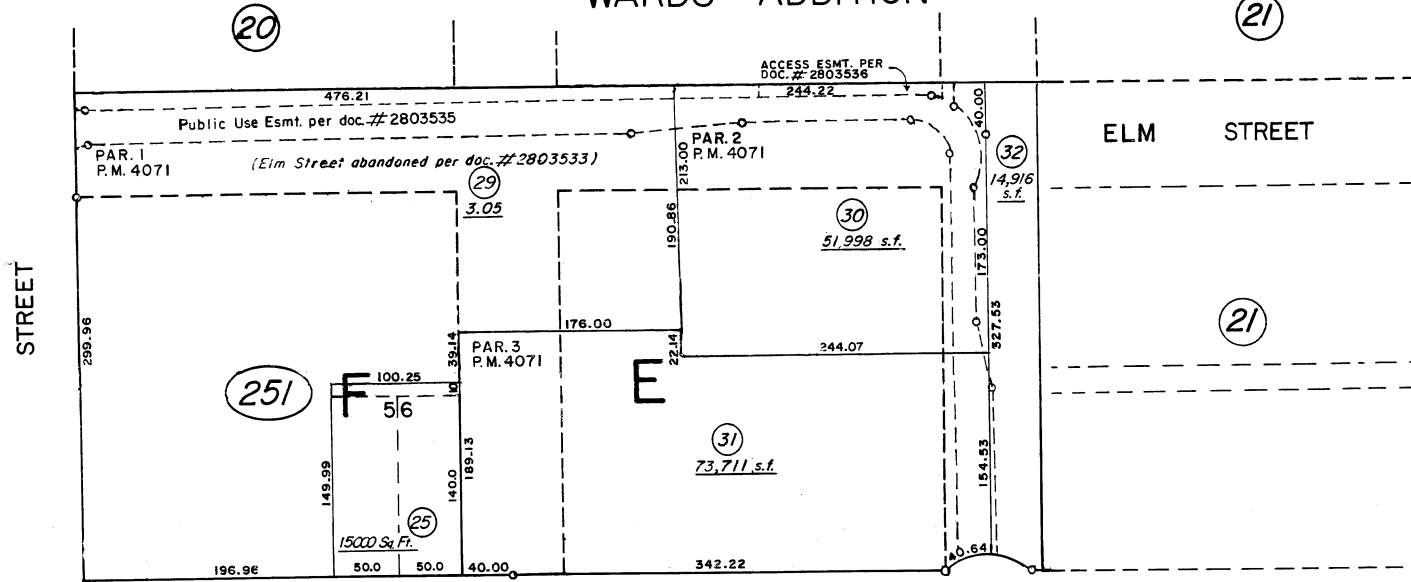
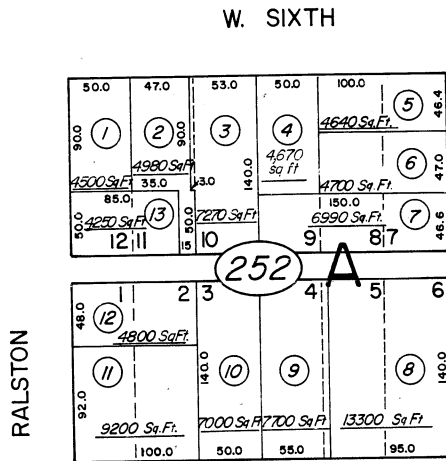


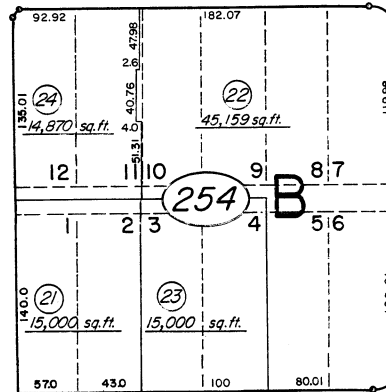
(#138)
WARDS ADDITION



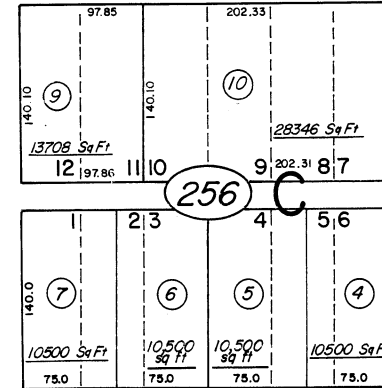
24



NEVADA STREET



N. ARLINGTON AVENUE



WEST

26

1" = 100'

W. FIFTH STREET

STREET

NOTE: This Map is prepared for the use of the Washoe County Assessor for Assessment and illustrative purposes only; it does not represent survey of the premises. No liability is assumed as to the sufficiency or accuracy of the data delineated hereon.

Assessor's Map County of Washoe, Nevada
NOTE - ASSESSOR'S BLOCK NUMBERS SHOWN IN ELLIPSES
ASSESSOR'S PARCEL NUMBERS SHOWN IN CIRCLES

drawn by P.C. 7/67
checked
revised TWT 10/3/03
superseded

28