

006-36

(#4779)

TRUCKEE RIVER TOWNHOMES

A COMMON-INTEREST COMMUNITY

POR'S. OF THE SW 1/4 OF SEC. 10
AND THE NW 1/4 OF SEC. 15
T19N - R19E

006-35

006-38

006-28

MARK JEFFREY LANE (PRIVATE)

361

006-33

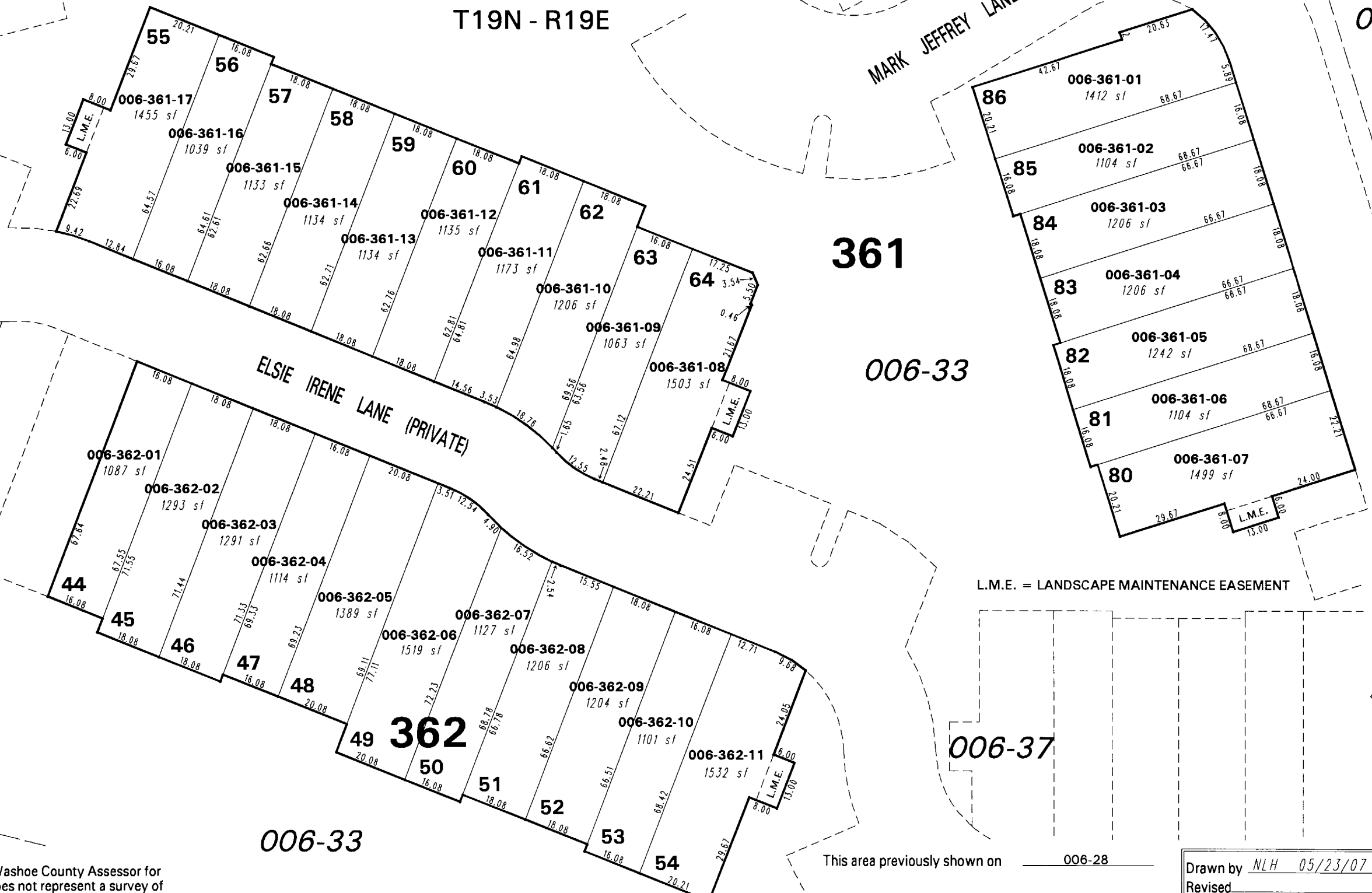
006-38

ELSIE IRENE LANE (PRIVATE)

L.M.E. = LANDSCAPE MAINTENANCE EASEMENT



1" = 30'



NOTE: This map is prepared for the use of the Washoe County Assessor for assessment and illustrative purposes only. It does not represent a survey of the premises. No liability is assumed as to the sufficiency or the accuracy of the data delineated hereon.

Office of Washoe County Assessor, Nevada - Joshua G. Wilson

This area previously shown on 006-28

NOTE: Areas of parcels which are less than 2 acres are shown in square feet.

Drawn by NLH 05/23/07
Revised _____