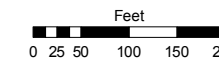


Assessor's Map Number

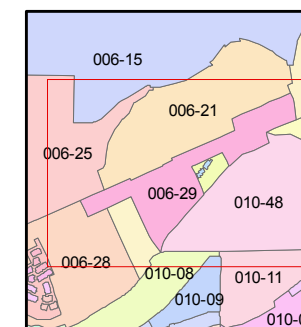
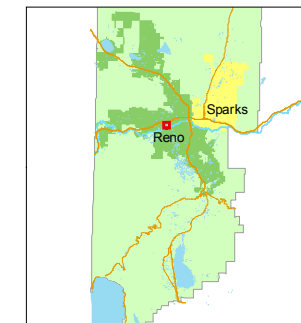
006-29

STATE OF NEVADA
WASHOE COUNTY
ASSESSOR'S OFFICE
Joshua G. Wilson, Assessor

1001 East Ninth Street
Building D
Reno, Nevada 89512
(775) 328-2231



1 inch = 200 feet



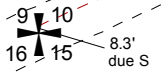
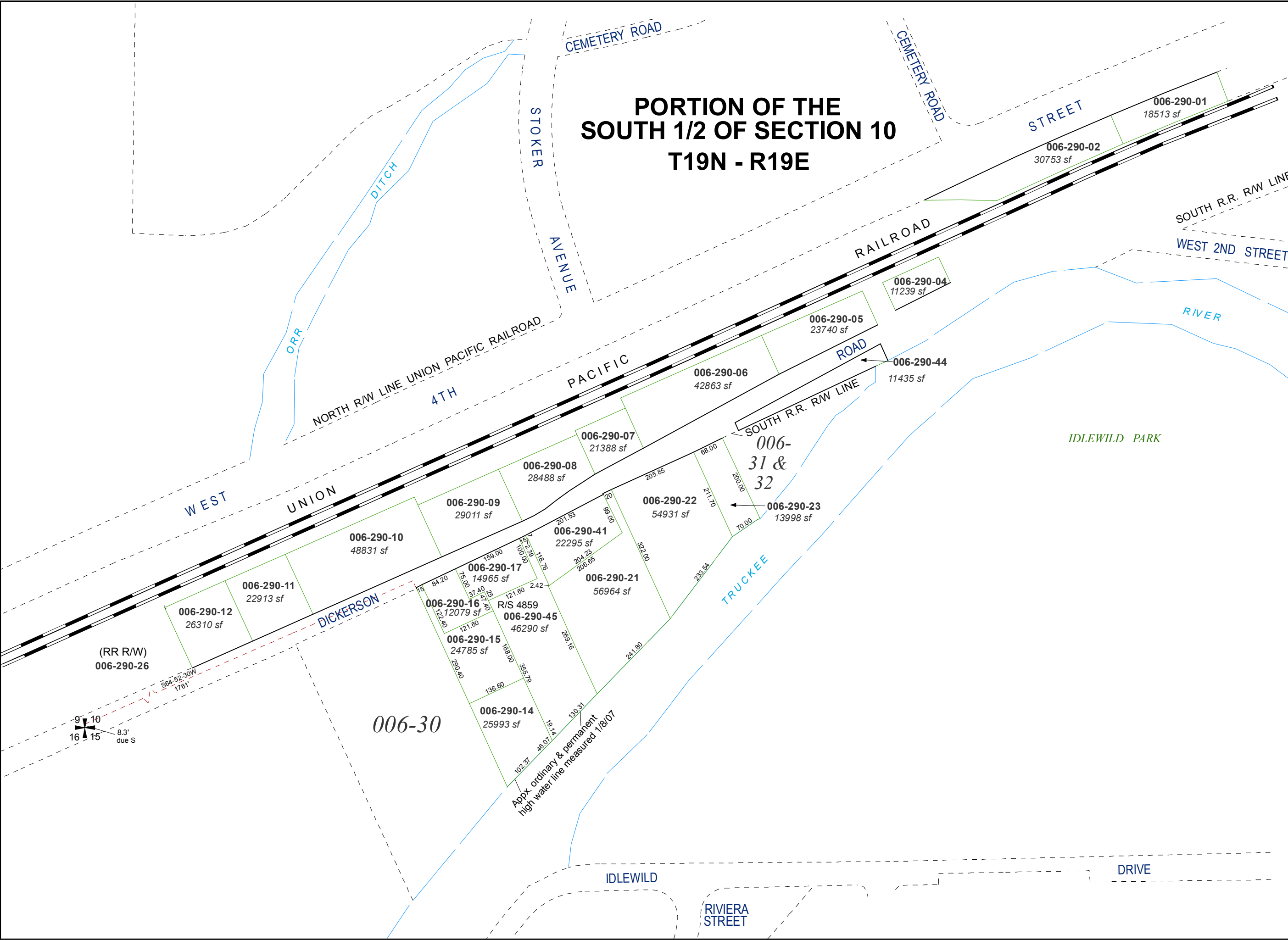
created by: TWT 9/30/2009

last updated: CFB 05/26/2011

area previously shown on map(s)

NOTE: This map was prepared for the use of the Washoe County Assessor for assessment and illustrative purposes only. It does not represent a survey of the premises. No liability is assumed as to the sufficiency or accuracy of the data delineated hereon.

PORTION OF THE SOUTH 1/2 OF SECTION 10 T19N - R19E



Appx. ordinary & permanent high water line measured 1/8/07