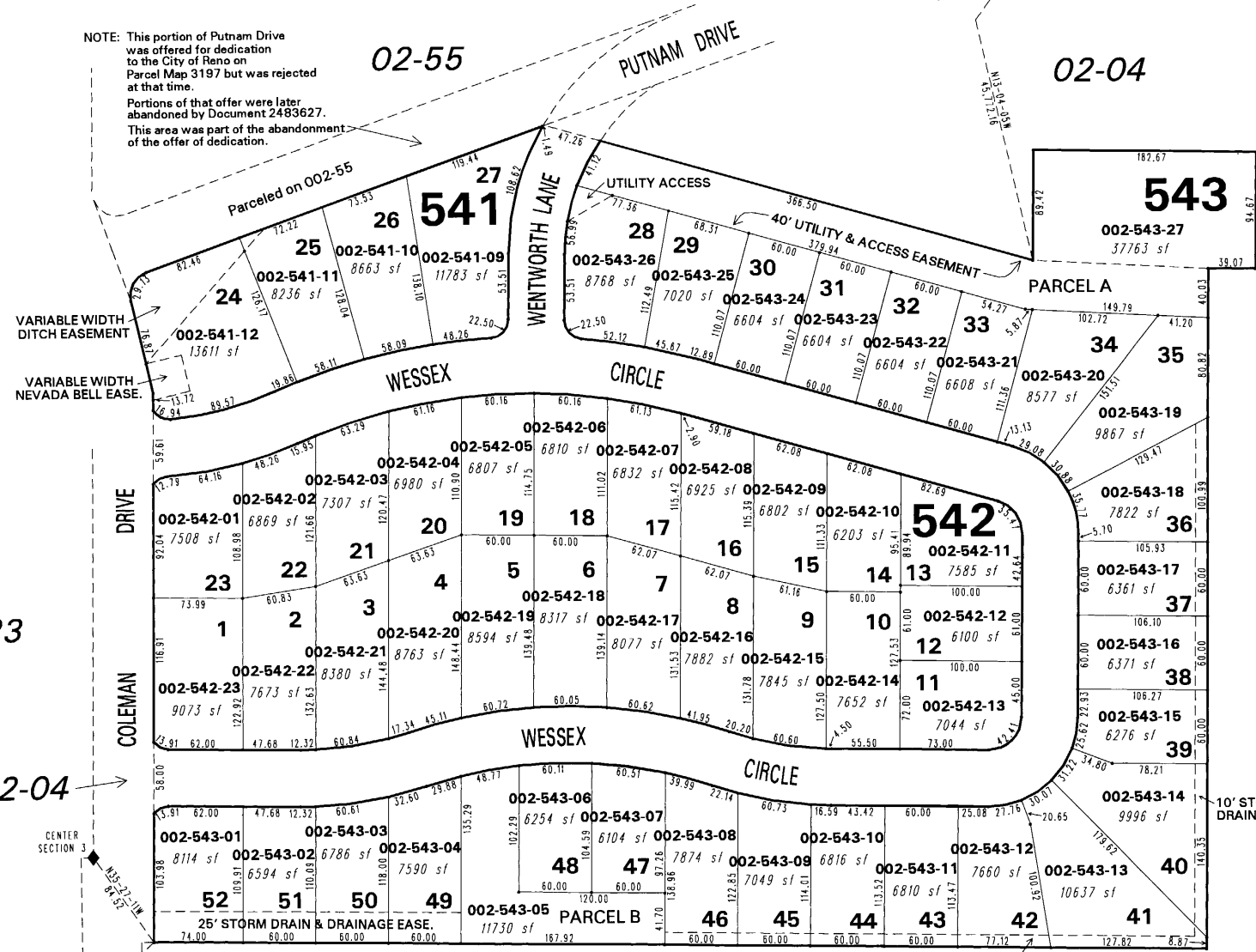


# (#3813) PARKLAND - UNIT 1 PORTION OF SECTION 3, T19N - R19E

NGS STATION  
"FAA REA A"  
N=14,918,263.34  
E= 2,262,347.76

NOTE: This portion of Putnam Drive was offered for dedication to the City of Reno on Parcel Map 3197 but was rejected at that time.  
Portions of that offer were later abandoned by Document 2483627.  
This area was part of the abandonment of the offer of dedication.



02-23

02-04

02-31

02-04

02-29

02-31

NGS STATION  
"CHALK BLUFF"  
N=14,863,132.50  
E= 2,260,504.49

NOTE: This map is prepared for the use of the Washoe County Assessor for assessment and illustrative purposes only. It does not represent a survey of the premises. No liability is assumed as to the sufficiency or the accuracy of the data delineated hereon.

Office of Washoe County Assessor, Nevada - Robert W. McGowan

This area previously shown on 02-04

NOTE: Areas of parcels which are less than 2 acres are shown in square feet.

Drawn by KS 04/06/00  
Revised TWT 10/2/00 KSB 9/24/01  
KSB 9/07/04 CFB 1/11/2005



1" = 100'

