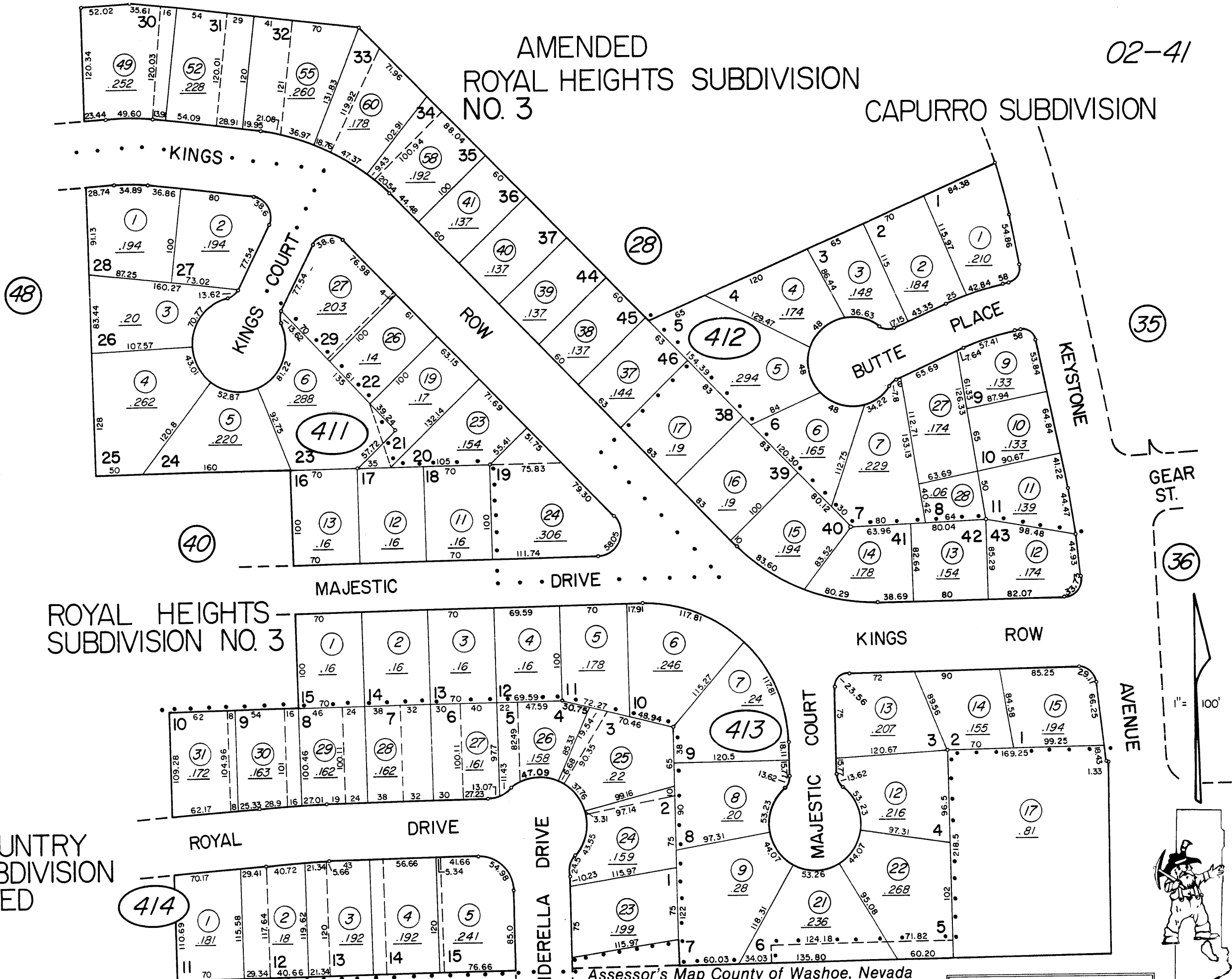


# AMENDED ROYAL HEIGHTS SUBDIVISION NO. 3

CAPURRO SUBDIVISION



TOWN & COUNTRY VILLAGE SUBDIVISION NO. 1 AMENDED

NOTE: This map is prepared for the use of the Washoe County Assessor for assessment and illustrative purposes only, it does not represent survey of the premises. No liability is assumed as to the sufficiency or accuracy of the data delineated herein.

BOOK 06

Assessor's Map County of Washoe, Nevada  
NOTE - ASSESSOR'S BLOCK NUMBERS SHOWN IN ELLIPSES  
ASSESSOR'S PARCEL NUMBERS SHOWN IN CIRCLES

Drawn by MC 1/73  
Revised by 1/85 10/85

