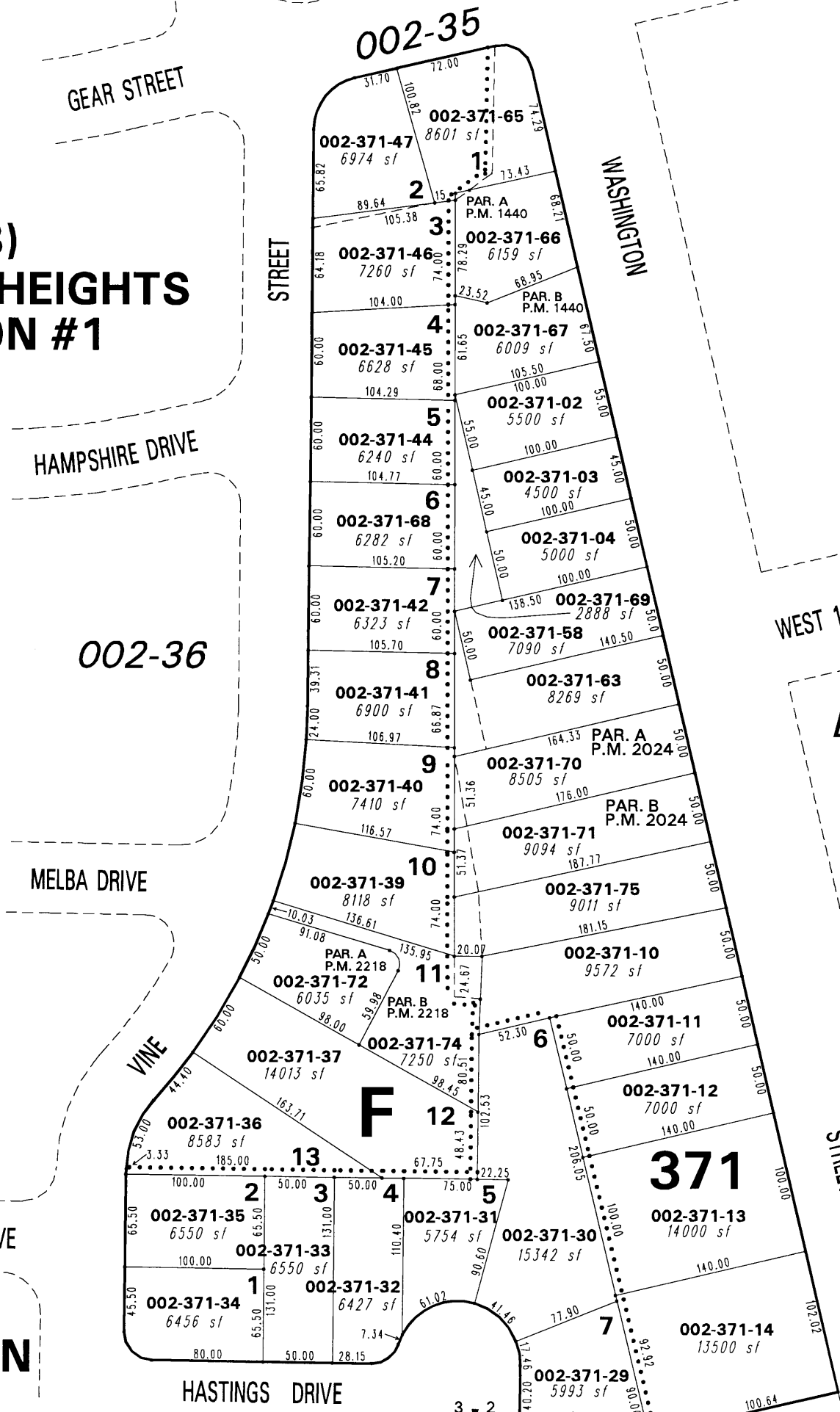


**(#274 B)
WASHINGTON HEIGHTS
SUBDIVISION #1**

PORTIONS OF SEC.'S 2 & 3,
T19N - R19E



002-36

BOOK 007

**(#427)
PRAY ADDITION**

002-15
Office of Washoe County Assessor, Nevada - Joshua G. Wilson

NOTE: This map is prepared for the use of the Washoe County Assessor for assessment and illustrative purposes only. It does not represent a survey of the premises. No liability is assumed as to the sufficiency or the accuracy of the data delineated hereon.

This area previously shown on _____

NOTE: Areas of parcels which are less than 2 acres are shown in square feet.

Drawn by NLH 04/17/08
 Revised _____

