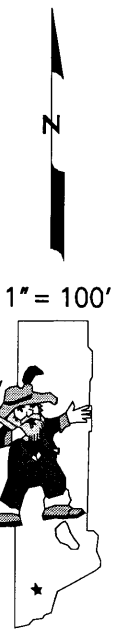
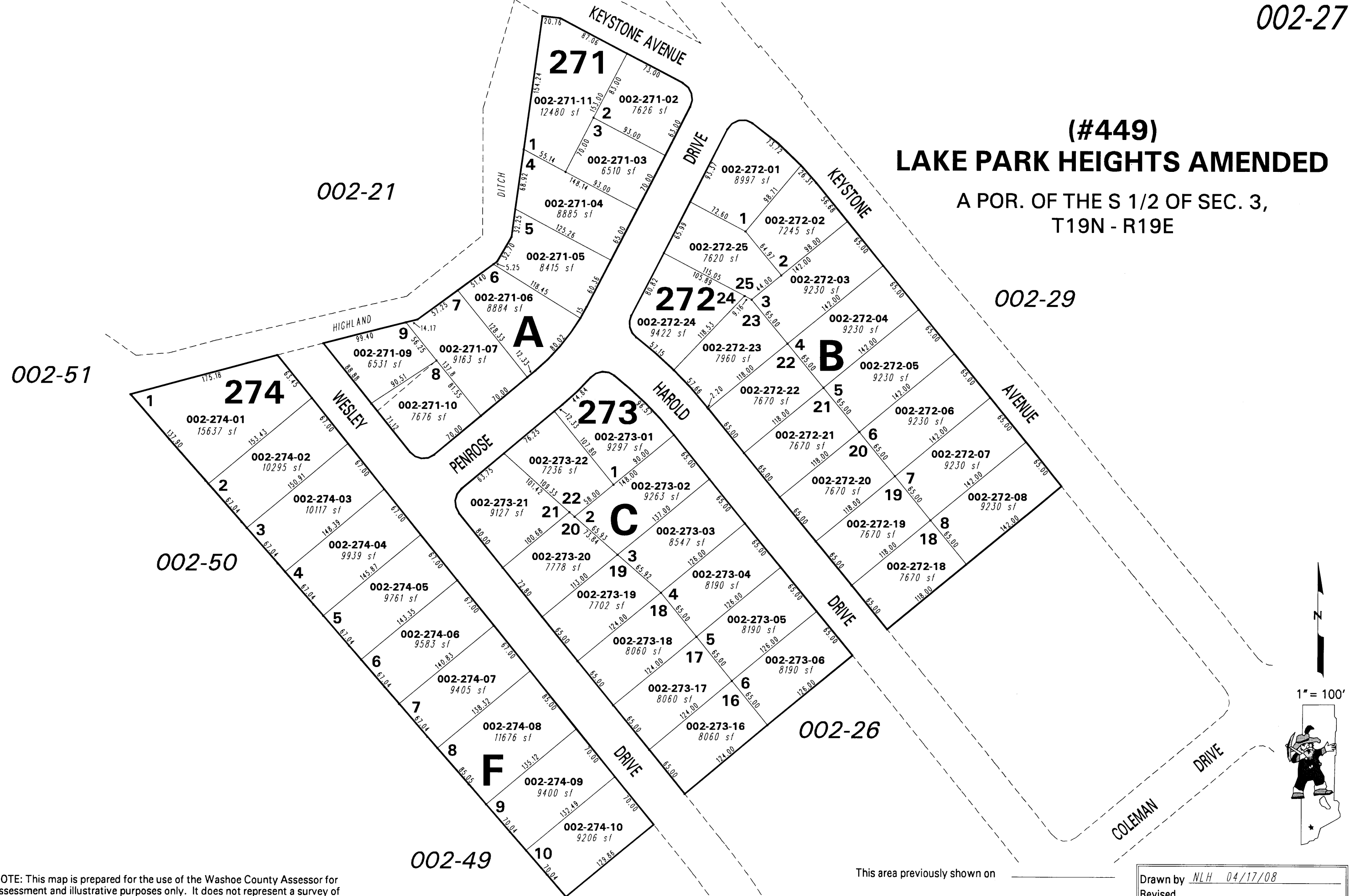


(#449)
LAKE PARK HEIGHTS AMENDED
A POR. OF THE S 1/2 OF SEC. 3,
T19N - R19E



NOTE: This map is prepared for the use of the Washoe County Assessor for assessment and illustrative purposes only. It does not represent a survey of the premises. No liability is assumed as to the sufficiency or the accuracy of the data delineated hereon.

Office of Washoe County Assessor, Nevada - Joshua G. Wilson

This area previously shown on _____

NOTE: Areas of parcels which are less than 2 acres are shown in square feet.

Drawn by	NLH 04/17/08
Revised	