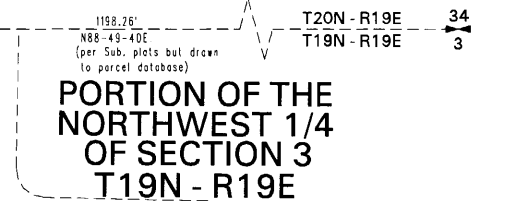
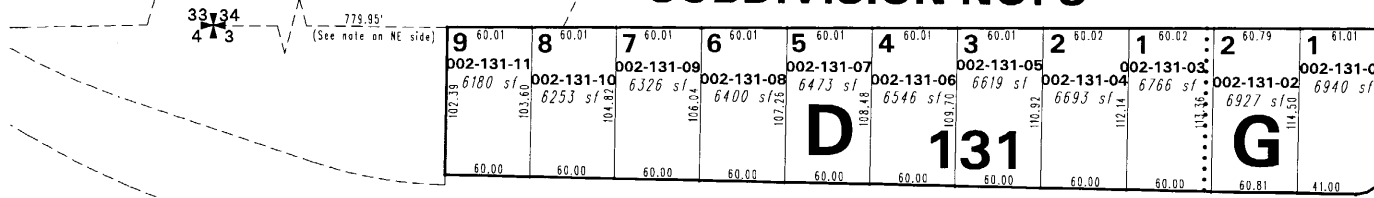


(#610) RENO HIGHLANDS SUBDIVISION NO. 3

002-02

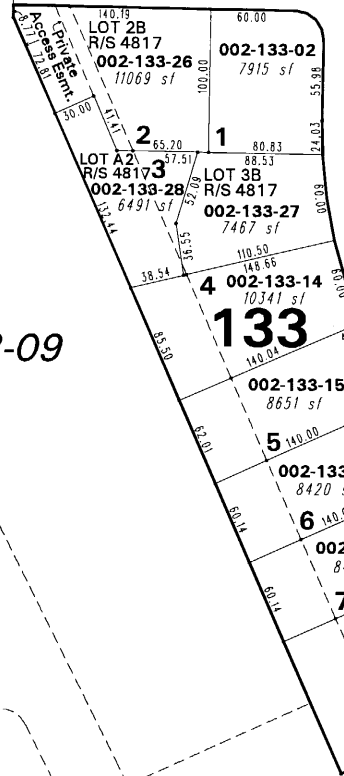
002-11

002-02



IVES

AVENUE

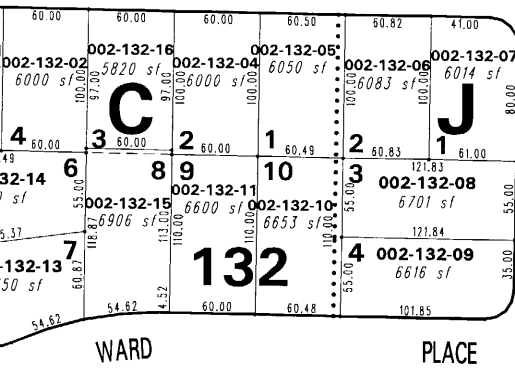


(#518) RENO HIGHLANDS SUBDIVISION NO. 2 UNIT NO. 2

002-09

002-14

002-07



WARD

PLACE

KEYSTONE AVENUE

ROAD

COTTAGE COURT

(#509) RENO HIGHLANDS SUB. NO. 2 UNIT NO. 1

NOTE: This map is prepared for the use of the Washoe County Assessor for assessment and illustrative purposes only. It does not represent a survey of the premises. No liability is assumed as to the sufficiency or the accuracy of the data delineated hereon.

Office of Washoe County Assessor, Nevada - Joshua G. Wilson

This area previously shown on _____

NOTE: Areas of parcels which are less than 2 acres are shown in square feet.

Drawn by TWT 07/25/06
 Revised TWT 1/16/07 V2

1" = 100'

