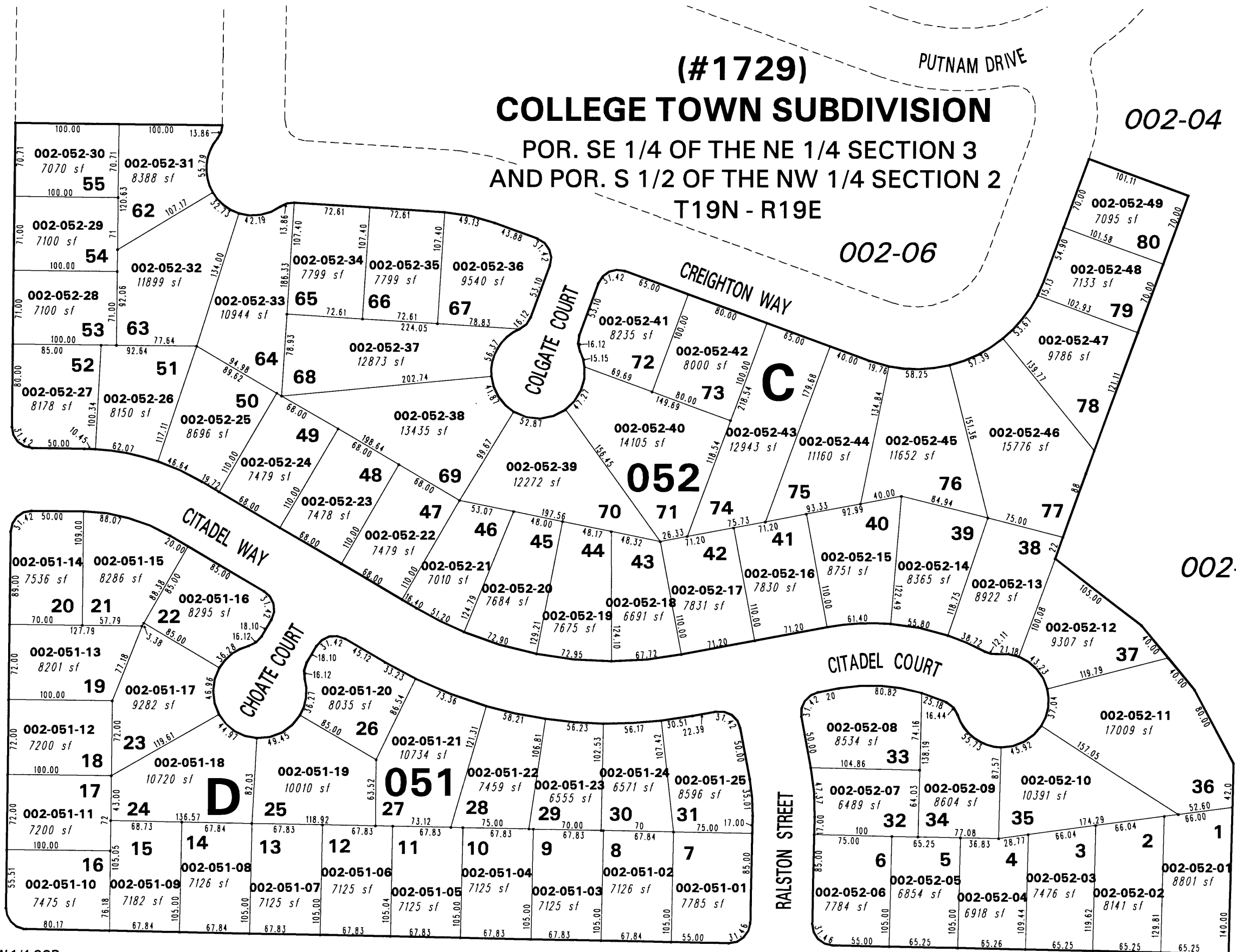


# COLLEGE TOWN SUBDIVISION (#1729)

POR. SE 1/4 OF THE NE 1/4 SECTION 3  
AND POR. S 1/2 OF THE NW 1/4 SECTION 2  
T19N - R19E



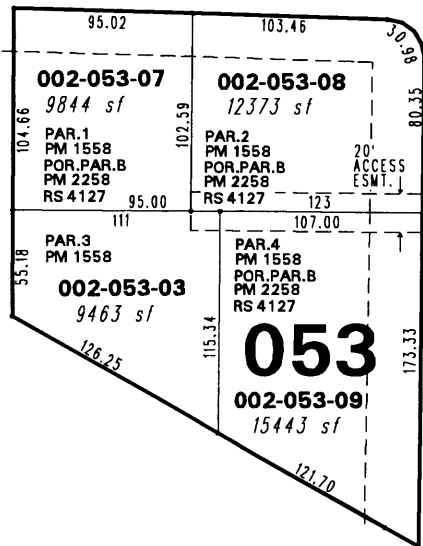
002-04

002-04

002-06

002-04

CITADEL WAY



WASHINGTON STREET

W 1/4 COR.  
SEC. 2

COLLEGE DRIVE

BK.07-PG.09

Office of Washoe County Assessor, Nevada - Robert W. McGowan

This area previously shown on \_\_\_\_\_

Drawn by HCS 8/20/02  
Revised \_\_\_\_\_

NOTE: Areas of parcels which are less than 2 acres are shown in square feet.

002-04

1" = 100'



NOTE: This map is prepared for the use of the Washoe County Assessor for assessment and illustrative purposes only. It does not represent a survey of the premises. No liability is assumed as to the sufficiency or the accuracy of the data delineated hereon.