

28
33
27
34

NO-4-59E
1321.89

Assessor's Map Number

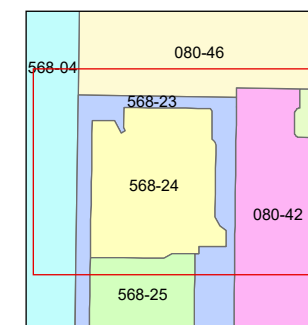
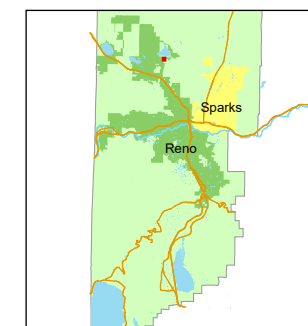
568-24

STATE OF NEVADA
WASHOE COUNTY
ASSESSOR'S OFFICE

1001 East Ninth Street, Building D
Reno, Nevada 89512
(775) 328-2231



1 inch = 80 feet



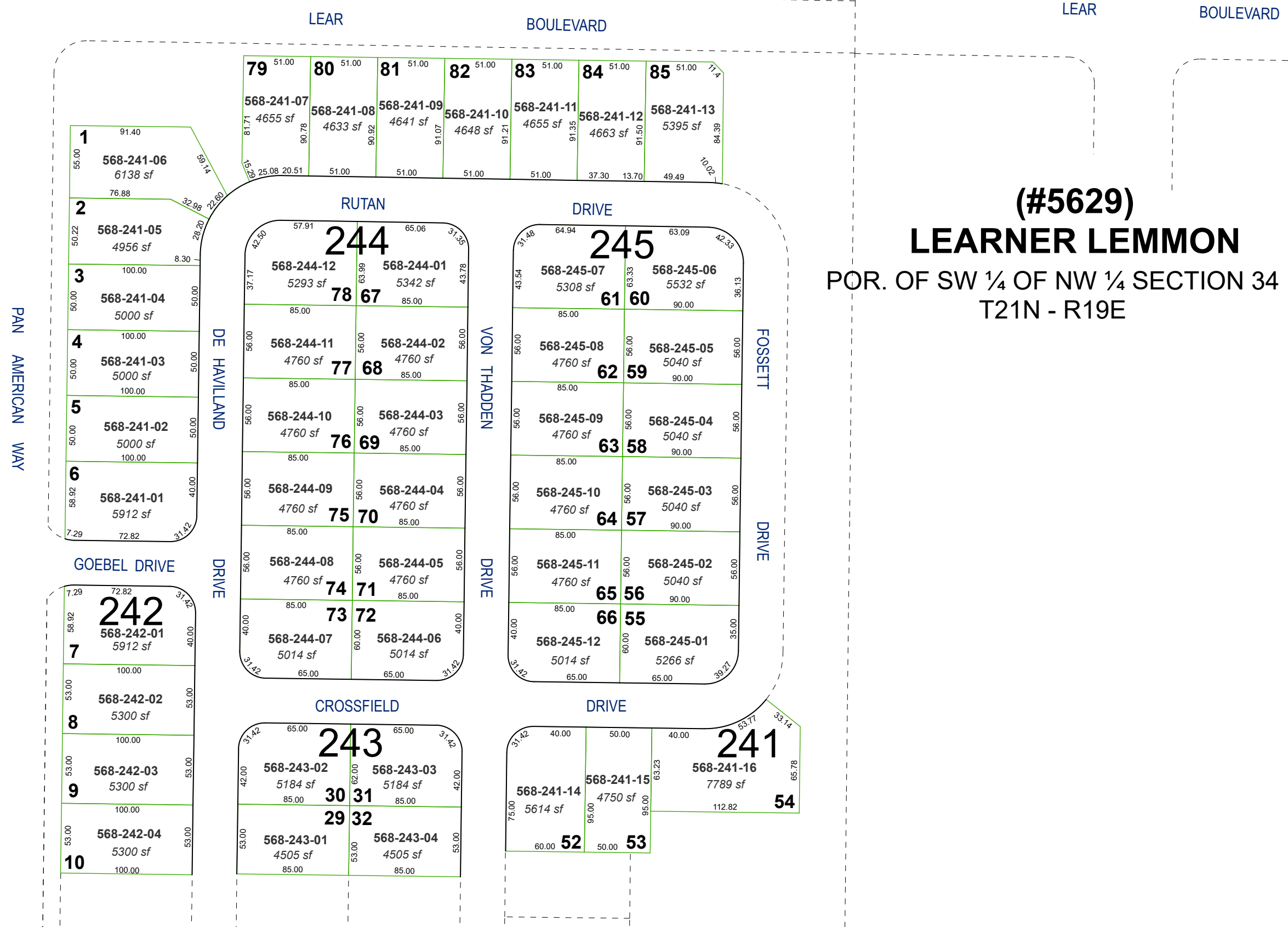
created by: JKF 6/29/2026

updated: _____

area previously shown on map(s):

080-46

NOTE: This map was prepared for the use of the Washoe County Assessor for assessment and illustrative purposes only. It does not represent a survey of the premises. No liability is assumed as to the sufficiency or accuracy of the data delineated hereon.



(#5629)
LEARNER LEMMON
POR. OF SW ¼ OF NW ¼ SECTION 34
T21N - R19E