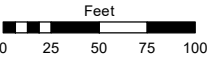
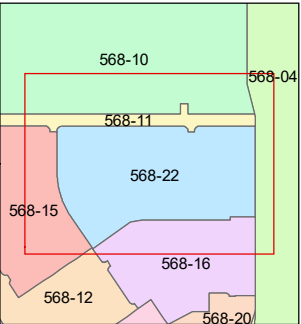
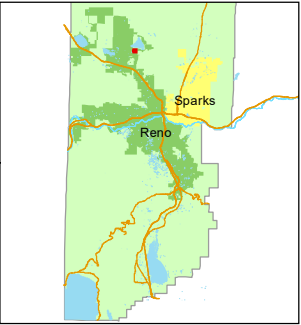


STATE OF NEVADA  
**WASHOE COUNTY**  
ASSESSOR'S OFFICE  
1001 East Ninth Street, Building D  
Reno, Nevada 89512  
(775) 328-2231



1 inch = 100 feet



created by: SR 12/16/2020

updated: SR 12/29/21

area previously shown on map(s):

568-11

NOTE: This map was prepared for the use of the Washoe County Assessor for assessment and illustrative purposes only. It does not represent a survey of the premises. No liability is assumed as to the sufficiency or accuracy of the data delineated hereon.

(#5400)  
**STONEFIELD PHASE 4**  
**VILLAGE 4**  
PORTION OF NE¼ SECTION 33  
T21N - R19E

