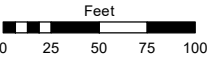
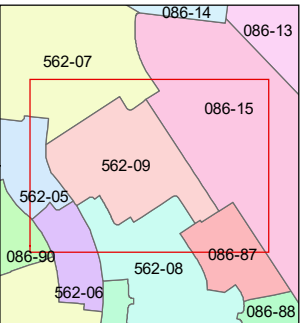
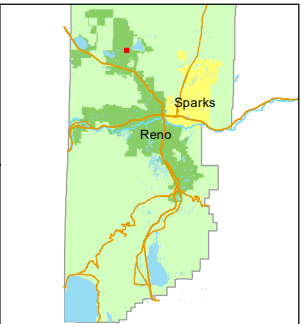


STATE OF NEVADA
WASHOE COUNTY
ASSESSOR'S OFFICE
1001 East Ninth Street, Building D
Reno, Nevada 89512
(775) 328-2231



1 inch = 100 feet



created by: SR 11/05/2020

updated: SR 08/16/21

area previously shown on map(s):

086-86

NOTE: This map was prepared for the use of the Washoe County Assessor for assessment and illustrative purposes only. It does not represent a survey of the premises. No liability is assumed as to the sufficiency or accuracy of the data delineated hereon.

(#5436)
REGENCY PARK II
PHASE A2

(#5391)
REGENCY PARK II
PHASE A1
A RESIDENTIAL SUBDIVISION
PORTION OF S½ SECTION 29
& N½ SECTION 32
T21N - R19E

