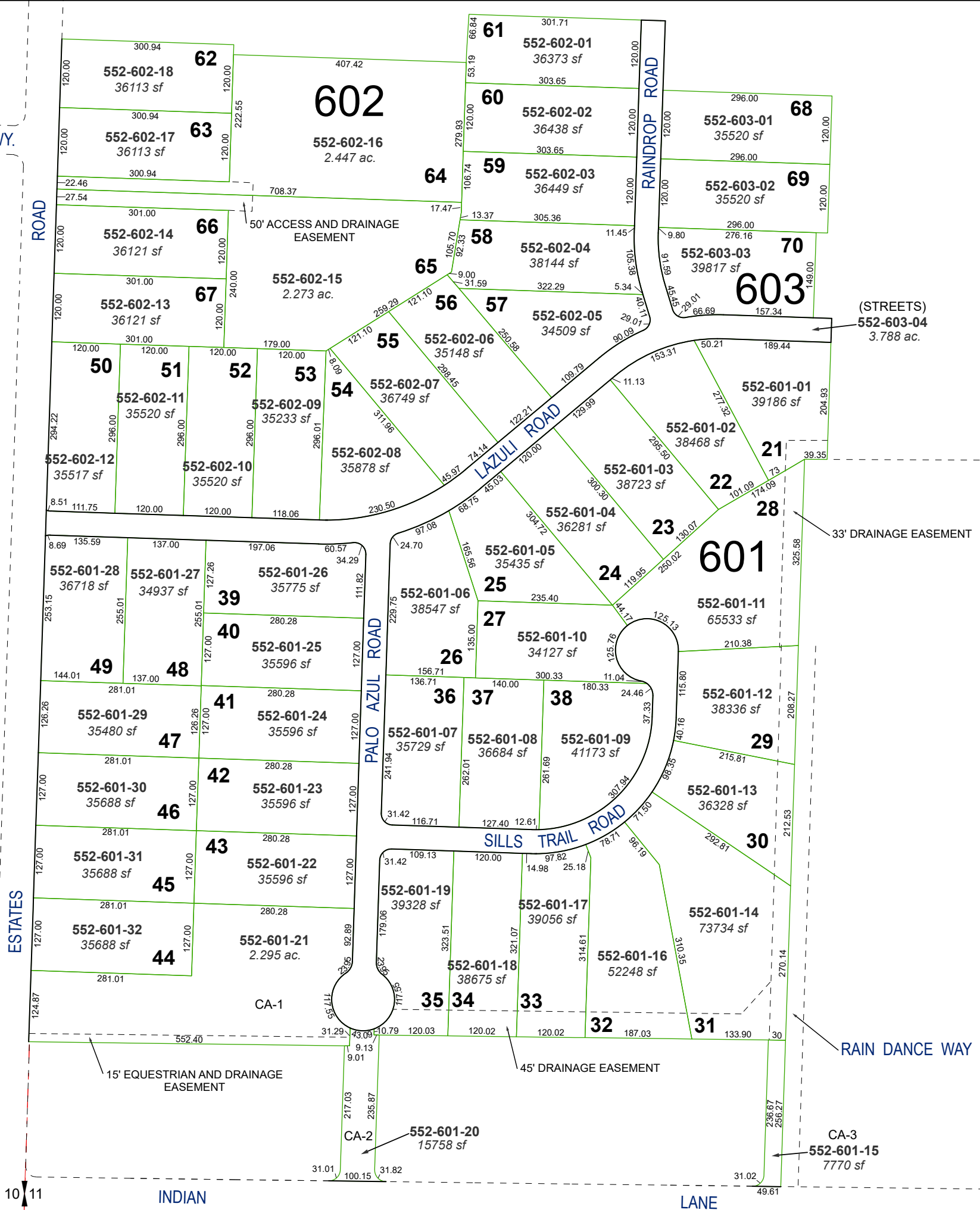


(#5621)
GOLDEN MESA NORTH PHASE 2
 POR. OF NW 1/4 OF SECTION 11
 T20N - R19E

BLUFF VIEW WY.



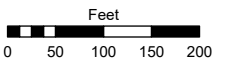
CA = COMMON AREA

Assessor's Map Number

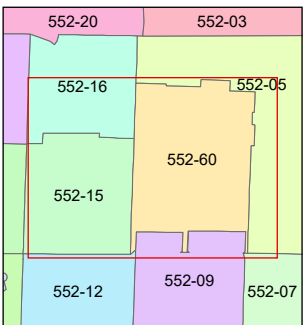
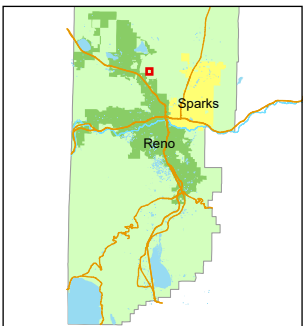
552-60

STATE OF NEVADA
WASHOE COUNTY
ASSESSOR'S OFFICE

1001 East Ninth Street, Building D
 Reno, Nevada 89512
 (775) 328-2231



1 inch = 200 feet



created by: MJS 4/29/2026

updated: _____

area previously shown on map(s):

552-05

NOTE: This map was prepared for the use of the Washoe County Assessor for assessment and illustrative purposes only. It does not represent a survey of the premises. No liability is assumed as to the sufficiency or accuracy of the data delineated hereon.