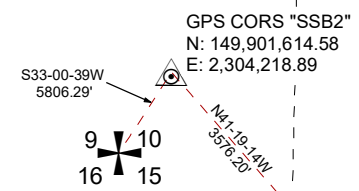
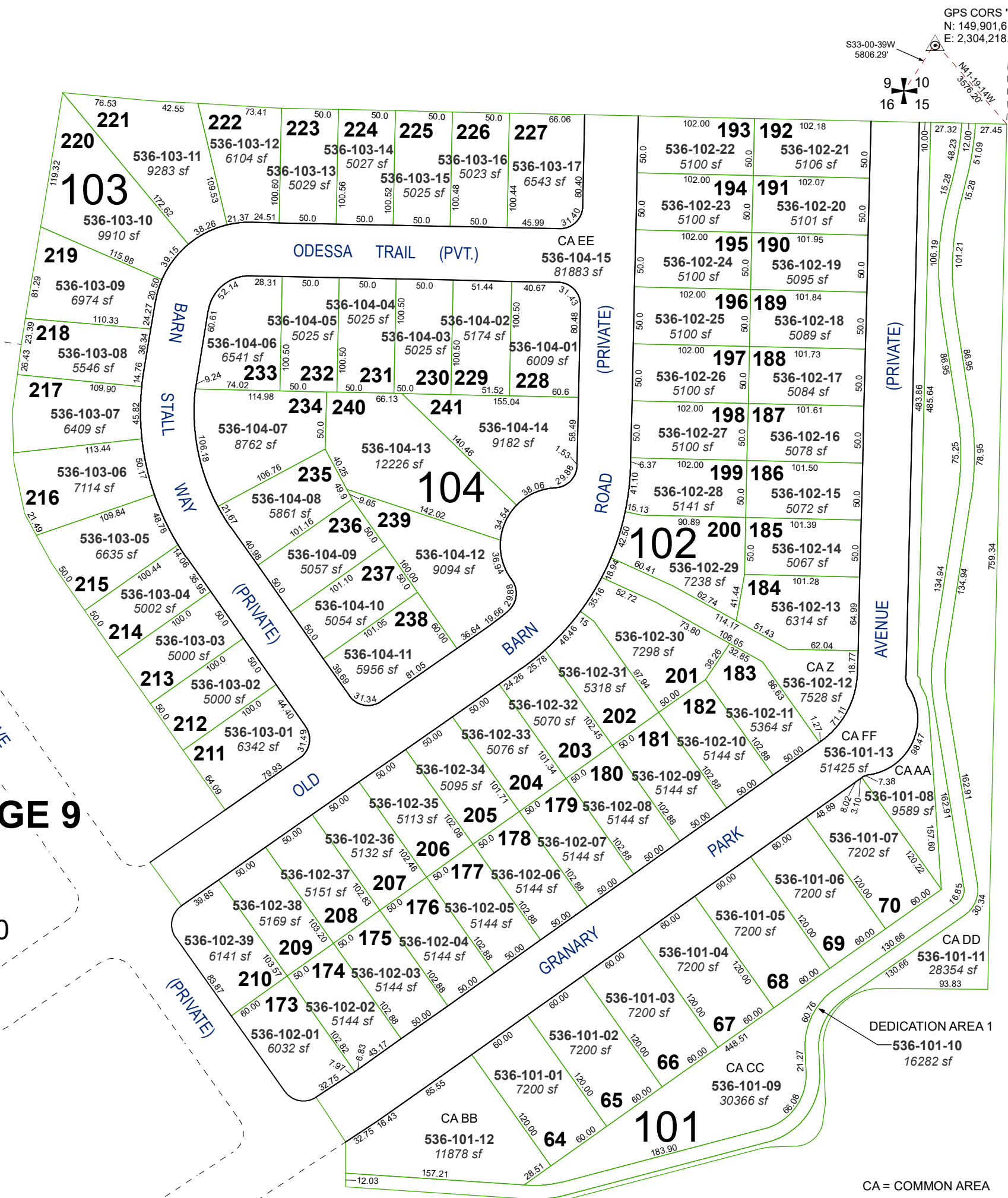
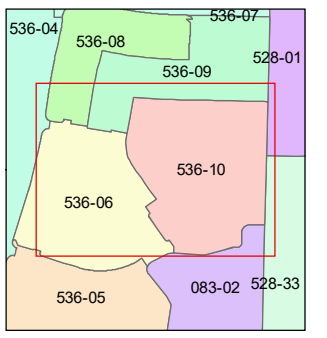
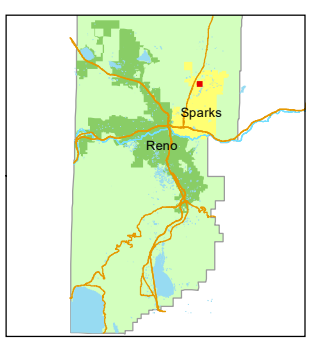
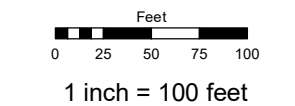


(#5346)
KILEY RANCH NORTH VILLAGE 9
UNIT-B2
A PLANNED UNIT DEVELOPMENT
PORTION OF THE E ½ SECTION 10
T20N - R20E



Assessor's Map Number
536-10

STATE OF NEVADA
WASHOE COUNTY
ASSESSOR'S OFFICE
1001 East Ninth Street, Building D
Reno, Nevada 89512
(775) 328-2231



created by: JMO 11/01/2019

updated: _____

area previously shown on map(s):
536-04

NOTE: This map was prepared for the use of the Washoe County Assessor for assessment and illustrative purposes only. It does not represent a survey of the premises. No liability is assumed as to the sufficiency or accuracy of the data delineated hereon.

CA = COMMON AREA