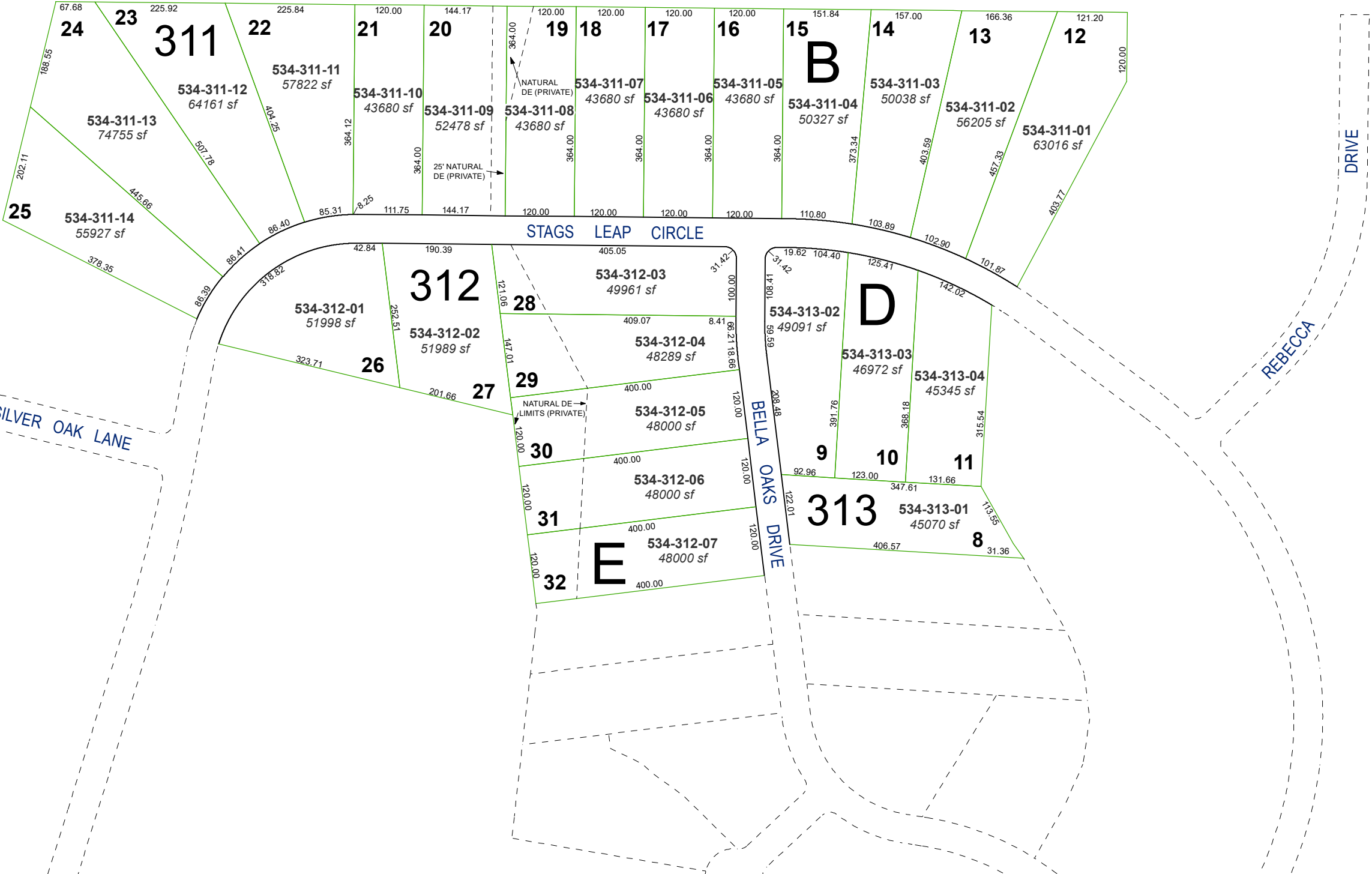


(#3056)  
**SURPRISE VALLEY RANCHOS**  
**UNIT 2 PHASE 1**

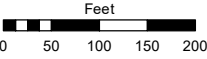
PORTION OF SE ¼ SECTION 25 &  
PORTION OF N ½ SECTION 36  
T21N - R20E



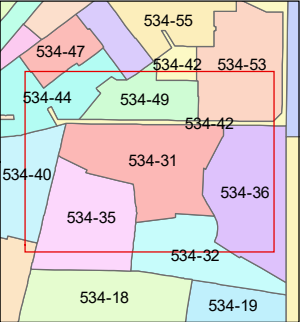
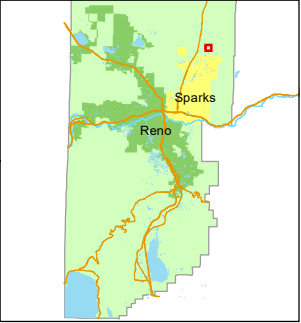
Assessor's Map Number

**534-31**

STATE OF NEVADA  
**WASHOE COUNTY**  
**ASSESSOR'S OFFICE**  
1001 East Ninth Street, Building D  
Reno, Nevada 89512  
(775) 328-2231



1 inch = 200 feet



created by: KGC 3/15/2024

updated: \_\_\_\_\_

area previously shown on map(s):  
76-79

NOTE: This map was prepared for the use of the Washoe County Assessor for assessment and illustrative purposes only. It does not represent a survey of the premises. No liability is assumed as to the sufficiency or accuracy of the data delineated hereon.