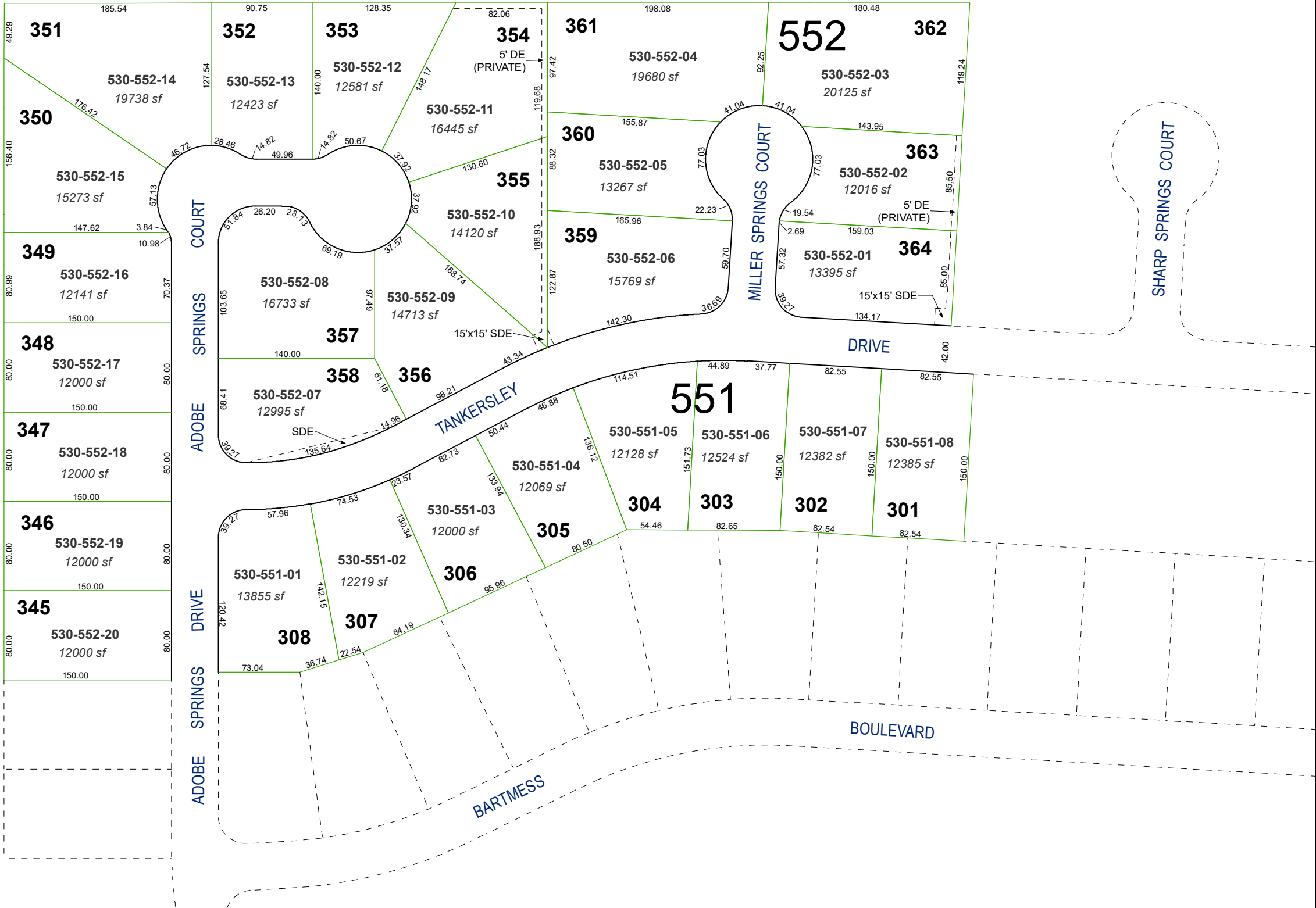


(#3995)  
NORTH SPRINGS ESTATES  
CIMARRON WEST, PHASE 3

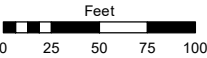
A PORTION OF N 1/2 OF SEC. 3, T20N - R20E &  
A PORTION OF S 1/2 OF SEC. 34, T21N - R20E



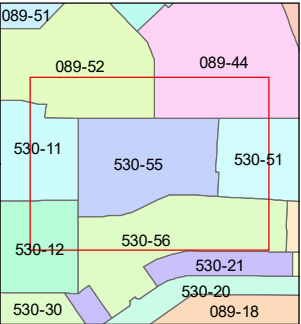
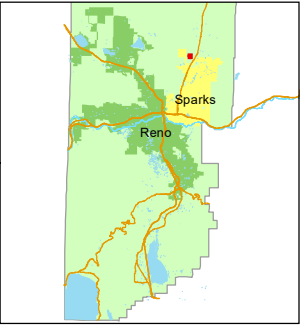
Assessor's Map Number

530-55

STATE OF NEVADA  
**WASHOE COUNTY**  
ASSESSOR'S OFFICE  
1001 East Ninth Street, Building D  
Reno, Nevada 89512  
(775) 328-2231



1 inch = 100 feet



created by: KGC 3/28/2024

updated:

area previously shown on map(s):

530-14

NOTE: This map was prepared for the use of the Washoe County Assessor for assessment and illustrative purposes only. It does not represent a survey of the premises. No liability is assumed as to the sufficiency or accuracy of the data delineated hereon.