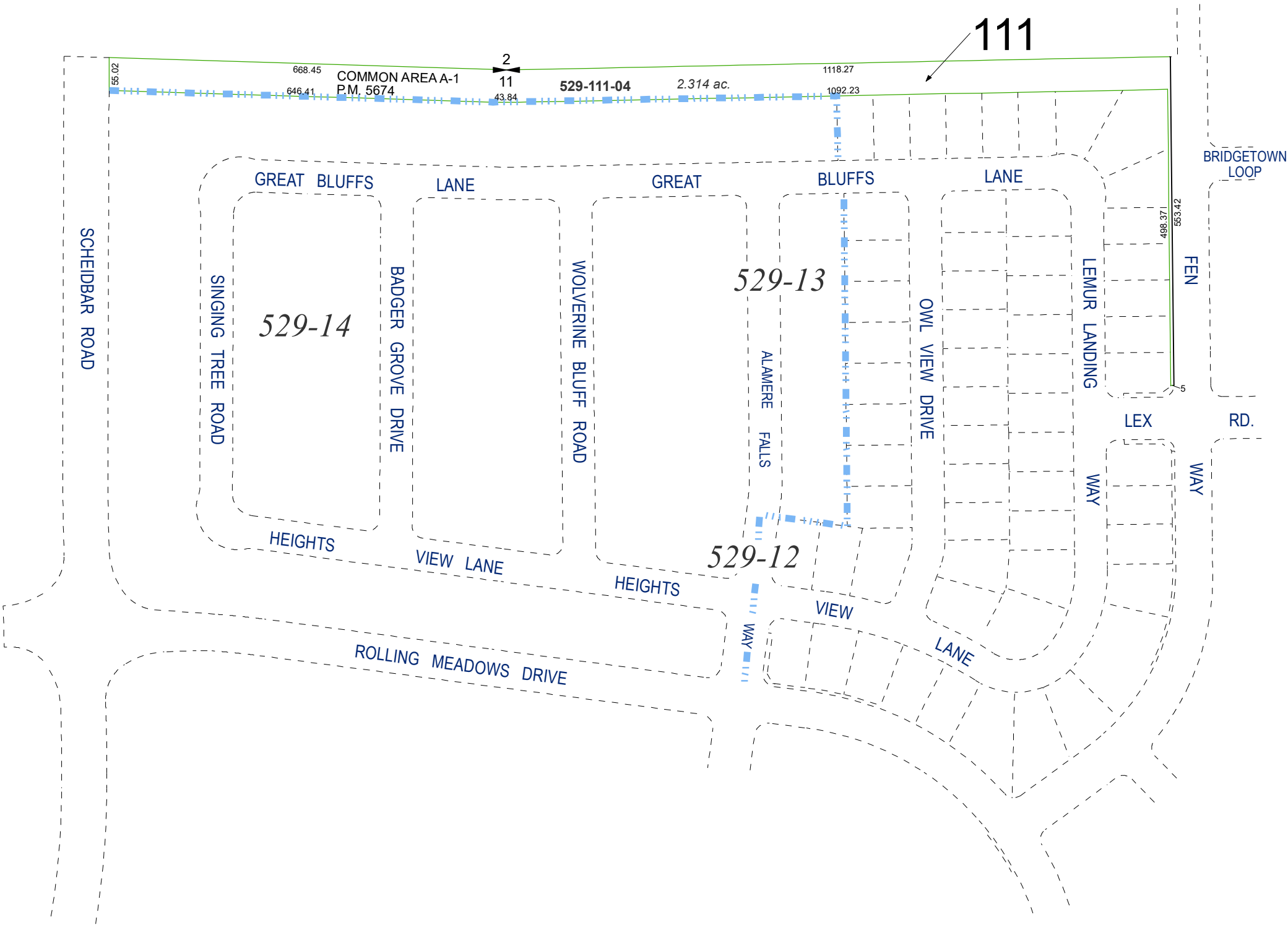


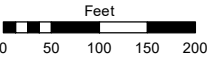
(#5485)
PIONEER MEADOWS VILLAGE 5 PHASE 1
PORTION OF N ½ SECTION 11
T20N - R20E



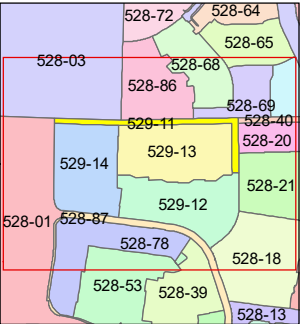
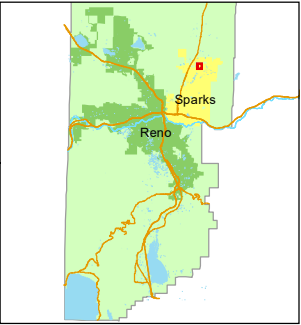
Assessor's Map Number

529-11

STATE OF NEVADA
WASHOE COUNTY
ASSESSOR'S OFFICE
1001 East Ninth Street, Building D
Reno, Nevada 89512
(775) 328-2231



1 inch = 200 feet



created by: JKF 5/02/2022

updated: JKF 5/12/22 JKF 6/20/23

JKF 12/15/23

area previously shown on map(s):

528-01

NOTE: This map was prepared for the use of the Washoe County Assessor for assessment and illustrative purposes only. It does not represent a survey of the premises. No liability is assumed as to the sufficiency or accuracy of the data delineated hereon.